

European Solar and Energy Storage Solutions

Kosovo eg4 powerpro



Overview

What is the EG4 PowerPro battery capacity?

Discover the EG4 PowerPro 14.3 kWh WallMount Battery – Your UL. EG4 PowerPro Energy Storage System: UL9540 Certified, 14.3 - 28.6kWh capacity, includes EG4-18Kpv and WallMount Battery for reliable solar energy storage.

What is EG4 PowerPro all weather battery?

Introducing the EG4 PowerPro WallMount All Weather Battery - the ultimate energy storage solution for all your solar power needs. This cutting-edge 48V 280Ah Lithium Iron Phosphate (LiFePO4) battery redefines reliability and performance, ensuring your power supply remains uninterrupted. Features: Confident Power Reliable All-Weather Design.

How reliable is EG4 PowerPro?

So far it has been very reliable power. The vents need to be labeled though so people don't unscrew them because there is no way to put them back. EG4 PowerPro WallMount Lithium Battery: 48V, 280Ah, 14.3kWh capacity. UL1973 & UL9540A certified, 10-year warranty. Ideal for all-weather energy storage.

Can I parallel the EG4 PowerPro battery?

There has been a bit of discussion on paralleling the EG4 PowerPro battery. This and the following posts show many of the most common configurations. The PowerPro battery is in the process of getting UL-certified for putting 3 in parallel using the internal Busbars and supplied cables.

Can a PowerPro battery be paralleled with a EG4 18kpv?

External busbars can be used to parallel multiple batteries, just like any other battery. For PowerPro batteries with a single EG4 18Kpv, here are several possible configurations using the internal busbars. NOTE: After learning more about the PowerPro battery and its capabilities, I have updated this for clarity and correctness.

Is EG4 scalable?

EG4 system is designed for scalability. You can always add more batteries and inverters in the near future as your energy needs grows and classify your system as certified. Maximize reliability with EG4's UL9540 certified PowerPro 18kPV WallMount All Weather ESS, scalable for diverse power needs in any weather.

Kosovo eg4 powerpro



Charging EG4 Power Pro batteries in parallel with EG4

...

Theoretical question I have 3 EG4 Power Pro batteries in parallel connected to two Sol-Ark 15k's in parallel and was wondering if in an emergency situation could I disconnect the batteries from my inverter, and connect the EG4 Chargeverter to the ...

12kW 14.3kWh EG4 PowerPro System (ESS)

HIGH-CAPACITY RESIDENTIAL ESS! The wall-mountable, all-weather EG4 PowerPro has arrived and is here to revolutionize power storage for every home in America. This 14.34kWh indoor configuration is the ideal solution for grid-tied power in your tiny home, cabin, family home, mansion, or office building, supported by comprehensive safety, reliability, state-of-the-art ...



Introducing the EG4 PowerPro WallMount All Weather ...

paired with an EG4 18kPV o No thermal monitoring, or ventilation needed o No maintenance o UL9540A on cell, components, and unit level. UL1973 on cell and module. o UL9540 pending o Outdoor Rating IP65 Introducing the EG4 PowerPro WallMount All Weather Battery - the ultimate energy storage solution for all your solar power needs.



Anyone else with the EG4 PowerPro having issues connecting the ...

Anyone else with the EG4 PowerPro having issues connecting the battery terminals with the conduit box attached? Seems like a terrible design. I already ran conduit so it's a pain to take the box off to land the battery wires. I looked at some other Eg4 video and looks like they didn't screw in the side insert (or took it out beforehand



Deye Official Store

10 years warranty

EG4 PowerPro WallMount AllWeather Lithium Battery

Introducing the EG4 PowerPro WallMount All Weather Battery - the ultimate energy storage solution for all your solar power needs. This cutting-edge 48V 280Ah Lithium Iron Phosphate (LiFePO4) battery redefines reliability and performance, ensuring your power supply remains uninterrupted. Features: Confident Power

EG4 PowerPro WallMount AllWeather Lithium Battery

Presenting the EG4 PowerPro WallMount All-Weather Battery, the prime choice for comprehensive solar energy storage. This state-of-the-art 48V 280Ah Lithium Iron Phosphate (LiFePO4) battery sets a new standard for reliability and ...



EG4 Powerpro Battery not showing up / dead



**200kWh
Battery Cluster**

EG4 PowerPro WallMount AllWeather Lithium Battery , 48V ...

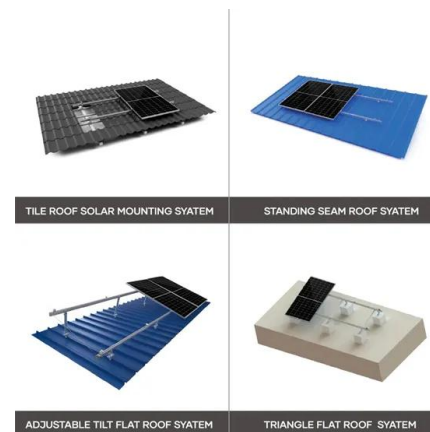
Presenting the EG4 PowerPro WallMount All-Weather Battery, the prime choice for comprehensive solar energy storage. This state-of-the-art 48V 280Ah Lithium Iron Phosphate (LiFePO4) battery sets a new standard for reliability and performance, guaranteeing seamless and continuous power supply for all your solar needs.



Paralleling the EG4 PowerPro Wall battery.

There has been a bit of discussion on paralleling

EG4 powerpro outdoor not sure the count . wps Solar Joules are catch and release. Joined Jul 6, 2023 Messages 4,643 Location Turks & Caicos Islands. Nov 19, 2024 #18 neo2299 said: EG4 powerpro outdoor not sure the count View attachment 257090. Click to expand Those are 16S, same as mine. Closed loop with what inverter? K.



Introducing the EG4 PowerPro WallMount All Weather ...

- o Model name: PowerPro WallMount All Weather Battery
- o Battery Type: LiFePO4 (Lithium Iron Phosphate, Grade A)
- o Voltage: 48V (Nominal: 51.2V, Float: 54V)
- o Continuous Charge/Discharge Current: 200A (Max)
- o Capacity: 14.3kWh
- o BMS: 200A
- o Weight: 308.6 lbs. / 140Kg
- o Dimensions: See diagram for detail (in inches)

the EG4 PowerPro battery. This and the following posts show many of the most common configurations. The PowerPro battery is in the process of getting UL-certified for putting 3 in parallel using the internal Busbars and supplied cables.



EG4 PowerPro 48V/280Ah LiFePO4 Battery - UL9540, Heated

Experience Unmatched Power and Reliability with the EG4 PowerPro Wallmount AllWeather 48V 280Ah Battery . Confident Power for Your Needs. 10kW delivery, accompanied by peak power outputs of 10.5kW (10 seconds) and an astounding 15.4kW (3 seconds). The constant discharge current of 200A ensures a consistent and stable power supply for your

EG4 PowerPro WallMount AllWeather Lithium Battery

Introducing the EG4 PowerPro WallMount All Weather Battery - the ultimate energy storage solution for all your solar power needs. This cutting-edge 48V 280Ah Lithium Iron Phosphate (LiFePO4) battery redefines reliability and ...



EG4 Powerpro vs Ruixu lithi2-16

Keep going back and forth on these. I'm trying to setup an all outdoor battery system in Houston, Texas with 3-4 of these batteries and an 18kPv. Really want to max my capacity due to long

blackouts. EG4's holiday sale brings the total of 3x powerpro all weathers (42.9kW total) to \$9835 after



EG4 , PowerPro WallMount AllWeather Lithium Battery , 48V ...

Introducing the EG4 PowerPro WallMount All Weather Battery - the ultimate energy storage solution for all your solar power needs. This cutting-edge 48V 280Ah Lithium Iron Phosphate (LiFePO4) battery redefines reliability and performance, ensuring your power supply remains uninterrupted. Features: Confident Power10kW deli



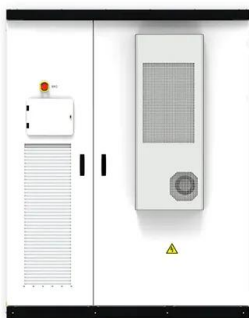
PowerPro ESS

Unlock the true potential of renewable energy with EG4's versatile energy storage systems (ESS). Key components of an ESS include batteries, a hybrid inverter, a solar charge controller, and solar panels, alongside a balance of system components like wires and fuses. These systems serve multiple purposes, including storing energy from renewable sources for times of low ...

EG4® PowerPro ESS: Uma visão geral abrangente

O que é o EG4® PowerPro ESS? O EG4® PowerPro Energy Storage System (ESS) é uma

solução avançada e integrada, projetada para gerenciamento eficiente de energia. Com uma capacidade robusta, este sistema é ideal para aplicações residenciais e comerciais, permitindo que os usuários aproveitem a energia solar, armazenem-na e utilizem-na ...

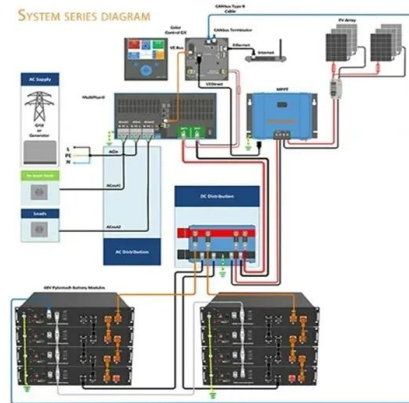


EG4 , PowerPro WallMount AllWeather Lithium Battery ...

Introducing the EG4 PowerPro WallMount All Weather Battery - the ultimate energy storage solution for all your solar power needs. This cutting-edge 48V 280Ah Lithium Iron Phosphate (LiFePO4) battery redefines reliability and ...

Battery Question - General Troubleshooting - EG4 Community ...

I'm currently in the design phase of a new system and am considering purchasing the EG4 PowerPro (with the FlexBoss21 and 12 - 18 panels TBD). I am leaning towards the PowerPro predominantly given my lack of a good interior space. I do not have a non-living space attached to my house for the equipment so I am planning on mounting all the units



EG4 PowerPro Conduit Box , Designed for EG4 PowerPro ...

Includes: EG4 PowerPro WallMount AllWeather Lithium Battery , 48V 280Ah , 14.3kWh LiFePO4 , All-Wea. \$9,746.00 \$8,595.00 Options. EG4 PowerPro Battery Paralleling Cables. Includes: o

Red positive battery parallel cable 53.1 in. (Qty 1)
Black negative battery parallel cable \$98.00 Add to Cart . EG4 Indoor Buildable Conduit Box , Designed for EG4



Contact Us

For catalog requests, pricing, or partnerships, please visit:
<https://www.ssab-proiect.eu>