

European Solar and Energy Storage Solutions

Jordan atlas copco bess



Overview

What is Atlas Copco's energy storage system?

Atlas Copco's Energy Storage Systems takes modular energy storage to a new level with up to 575kWh of Nominal Energy Storage Capacity. View our products today!.

What does Atlas Copco do?

This is where Atlas Copco have done much of the considerations already. Our focus is harnessing electricity using specialist batteries, often called 'BESS' (Battery Energy Storage Systems), to be used at a more convenient time and later and increase its value economically.

What is the eco controllertm by Atlas Copco?

The ECO Controller™ by Atlas Copco, is a hu-man-machine interface (HMI) that provides op-erators with full control over their temporary power applications by optimizing energy gen-eration, distribution, and consumption through advanced data management. WHY ECO?

WHAT DOES IT DO?

.

Is Atlas Copco responsible for errors or changes in data?

Atlas Copco is not responsible for any problem that may occur due to errors or changes of these data. They can also be changed or rectify without prior notification.

What type of battery does Atlas Copco use?

All associated with using fuel. Safety - There are many battery types - Atlas Copco only use Lithium Phosphate Ion (LiFePo4 abbreviated as LFP) as it is scientifically proven to be a more stable when charging and non-explosive

compared to other Lithium-Ion or cheaper battery types.

Jordan atlas copco bess

HEAT DISSIPATION

Cold aisle containment, making optimal refrigeration effect:



Atlas Copco expands battery energy storage range

Atlas Copco has added 120kVA and 150kVA capacity battery energy storage systems (BESS) to its range, extending upwards its line of canopy, portable models, which now comprises five units with power outputs from 15kVA to 150kVA.

Your path to clean and quiet energy

Atlas Copco is not responsible for any problem that may occur due to errors or changes of these data. They can also be changed or rectify without prior notification. Some of our certificates (Batteries UL1973, UN38.3, IEC62281, IEC62619) (Performance EN-IEC 61000, EN-IEC 60335, EN-IEC 60335, EN-IEC 62109, EN 55014, UL1741, IEEE1547,



51.2V 300AH

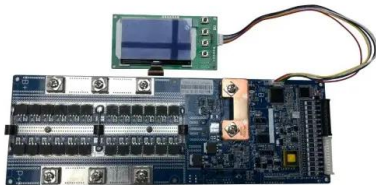
Atlas Copco adds five ESS models to portfolio

Atlas Copco Power and Flow has launched five new models of its industry-leading lithium-ion energy storage systems (ESS). The new units take modular energy storage to a new level, expanding the spectrum of suitable applications, and providing customers with increased options for power, says the European solutions provider.

Atlas Copco introduces new

battery energy storage ...

The Power and Flow division of Atlas Copco has launched five new li-ion battery energy storage system (ESS) solutions. The new ESS are intended for noise-sensitive environments, such as live events, inner-city ...



Atlas Copco expands battery energy storage range

Atlas Copco has added 120kVA and 150kVA capacity battery energy storage systems (BESS) to its range, extending upwards its line of canopy, portable models, which now comprises five units with power outputs from 15kVA to 150kVA. These new canopy models are available alongside Atlas Copco's larger, containerised BESS products, which come in

Elevating Sustainability with Zenergize Battery Energy Storage ...

Atlas Copco's BESS units in the Zenergize range can provide over 12 hours of power with a single charge and can be charged from very low to full in less than 60 minutes, minimising downtime for operators. These units can function as stand-alone power sources or in conjunction with other sources like diesel, solar, mains power, and wind.



Atlas and COPEC sign PPA for 200MW/800MWh BESS in Chile

US developer Atlas Renewable Energy has signed a power purchase agreement (PPA) with COPEC,



a Chilean energy and forestry company, to deploy a 200MW/800MWh battery energy storage system (BESS) in Chile. The 4-hour duration project, BESS del Desierto will be installed next to Atlas' 230MW Sol de Desierto solar project in the ...

Home page , ASIBEX

ASIBEX, an authorized distributor of Atlas Copco in Saudi Arabia, is dedicated to delivering a wide array of services. Our offerings encompass:
 ASIBEX Jordan Head Office +962 6 5621936
 ASIBEX KSA Branch / Jeddah +966 12 697 5091
 ASIBEX KSA Branch / Riyadh +966 11 241 5197.
 Email: info@asibex .jo. Social.



**LPR Series 19
Rack Mounted**

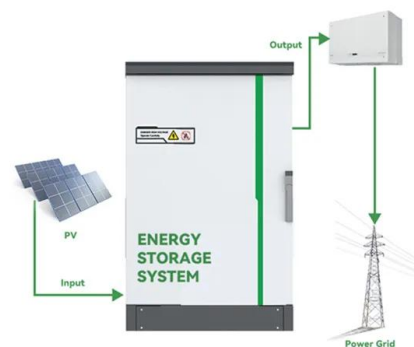


Meet Greg Jordan

Meet Greg Jordan, your local Industrial Air Sales Engineer in Pennsylvania. Meet Greg Jordan, your local Industrial Air Sales Engineer in Pennsylvania. "Trust Atlas Copco factory direct sales, service and parts for all your compressor and nitrogen needs." (866) 546-3588. info@atlascopcousa .

What is an Energy Storage System?

A BESS (Battery energy storage system) also called "Battery pack" is made up of a set of batteries and an inverter system. The first ones are the responsible to store the energy and normally we measure it in kWh, and the second ones provide the amount of maximum power (kW) you can deliver. Atlas Copco's ZenergiZe



range is a good example

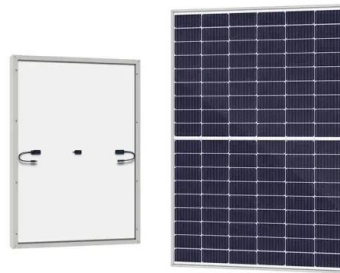


Atlas Copco expands battery energy storage range

Atlas Copco has added 120kVA and 150kVA capacity battery energy storage systems (BESS) to its range, extending upwards its line of canopy, portable models, which now comprises five units with power outputs from 15kVA to 150kVA. These new canopy models are available alongside Atlas Copco's larger, containerised BESS products, which come in

Product Spotlight

Our BESS has an increased kVA capacity to reduce the need of the oversized generator. If there is a preference to provide power for longer without the generator running, we have the range to increase the battery capacity too (measured in kWh's), even synchronise our BESS together (sometimes called 'Paralleling') to keep increasing their



Atlas Renewable Energy - Powered by Excellence

Atlas is at the forefront in developing and operating clean energy projects in Latin America. BESS del Desierto will be among the largest storage contracts in Chile and the first large-scale independent, standalone Battery Energy Storage System (BESS) and will have a storage capacity of 200 MW and 4 hours.

Atlas Copco introduces new battery energy storage

systems

The Power and Flow division of Atlas Copco has launched five new li-ion battery energy storage system (ESS) solutions. The new ESS are intended for noise-sensitive environments, such as live events, inner-city construction sites and similar locations.



Machinery Products

Atlas Copco companies develop, manufacture, service, and rent industrial tools, air compressors (of which it is the world's leading producer), construction and assembly systems. The Group operates in four areas: Compressor Technique, Vacuum Technique, Construction Technique and Industrial Technique.

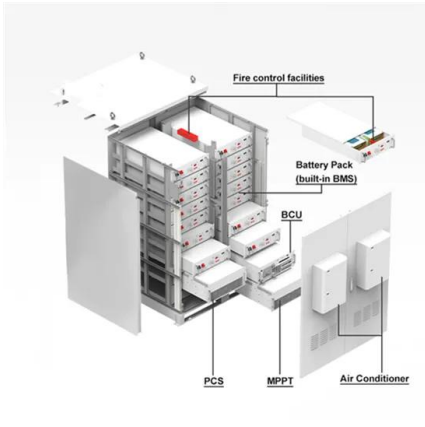
Business Units

ATLAS COPCO. OIL FREE COMPRESSORS.
 AHLSTROM. OIL INJECTED COMPRESSORS.
 PORTABLE COMPRESSORS. NITROGEN
 GENERATORS. AIR QUALITY. F.A.Kettaneh & CO.
 LTD. Amman, Alquds Street Building No 338 P.O.
 Box 485 Amman 11118 Jordan (+962) 6
 4397173. admin@kettaneh .jo. BECOME A
 SUPPLIER LET'S GROW TOGETHER! SIGN ...



Your path to clean and quiet energy

Atlas Copco's consolidated Energy Storage System (ESS) range is at the heart of the power supply transformation. Developed with sustainability in mind, it helps operators dramatically reduce their fuel consumption and CO2 emissions, while delivering optimal performance with reduced noise and service



cycles. Leveraging the benefits of

Air Compressor Service South Jordan Utah

Our South Jordan team offers preventive compressed air and vacuum pump maintenance plans, as well as 24/7 urgent service and repair. As a world leader in manufacturing and air compressor solutions, Atlas Copco knows the importance of being close to the customer and providing high-quality, locally based air compressor service and maintenance.



Elevating Sustainability with Zenergize Battery Energy Storage ...

Atlas Copco's BESS units in the Zenergize range can provide over 12 hours of power with a single charge and can be charged from very low to full in less than 60 minutes, minimising downtime for operators. These units can function as stand-alone power sources or in conjunction with other sources like diesel, solar, mains power, and wind.

Elevating Sustainability with Zenergize Battery Energy ...

Atlas Copco's BESS units in the Zenergize range

can provide over 12 hours of power with a single charge and can be charged from very low to full in less than 60 minutes, minimising downtime for operators. These units ...



WEDA Submersible Pumps

At Atlas Copco, we understand pumps, their applications and, most importantly, the people using them. We have a complete range of high-quality and lightweight electric submersible pumps designed specifically for drainage, sludge and slurry pumping applications and ...

Contact Us

For catalog requests, pricing, or partnerships, please visit:
<https://www.ssab-proiect.eu>