

European Solar and Energy Storage Solutions

Is it okay to add a booster line to the photovoltaic panels



Overview

1. Identify the existing solar panel system and booster valve specifications, 2. Gather the necessary tools and materials, 3. Disconnect power sources before starting the installation, 4. Establish a secure connection between the booster valve and solar panel line, 5. Test the system to ensure functionality.

1. Identify the existing solar panel system and booster valve specifications, 2. Gather the necessary tools and materials, 3. Disconnect power sources before starting the installation, 4. Establish a secure connection between the booster valve and solar panel line, 5. Test the system to ensure functionality.

The potential overload can be avoided either by adding a main breaker to the feed through panel per 705.12 (B) (2) (1) (b) or downsizing the main breaker 705.12 (B) (2) (1) (a). When a main is added to the feed through panel, the meter-main panel can essentially be treated as if no feed through panel was connected.

If you have an electrical service and do not want to upgrade your service, you can swap out the main service panel for a “solar ready” combination service entrance device (CSED) that has a separate breaker connection for solar. For a typical 200A service, you can interconnect up to a 16-kW solar inverter.

Solar panels do not always come with the solar connector attached. Attaching a solar panel connector to a PV wire is a two-step process: (1) crimping and (2) tightening the connector, to do this you require a wire stripper, crimping tool, and a solar panel connector assembly tool.

Load side PV tap in a gutter with feeder taps. Summary. Most residential service load centers are not designed to accept secondary sources of power such as PV systems. Connecting to these load centers can be easily done with a backfed circuit breaker, within certain parameters. Can a backfeed breaker be used to connect a solar PV system?

A backfeed breaker can be used to connect a solar PV system to the load-side of a service. There are several different ways this can be done per the NEC but the most common method for solar residential installs is by connecting it to

the end of a busbar using the 120% rule (705.12 (D) (2) (3) (B)). Governing Code (s): 705.12 (B) (2) (3) (b).

Should I connect my solar PV system to my existing electrical system?

When hooking up your solar PV system to the existing electrical system, it's crucial to tread carefully. A faulty connection might lead to equipment overload, and inspectors might not catch the mistake right away.

Do solar panels come with a solar connector?

Solar panels do not always come with the solar connector attached. Attaching a solar panel connector to a PV wire is a two-step process: (1) crimping and (2) tightening the connector, to do this you require a wire stripper, crimping tool, and a solar panel connector assembly tool.

What if I don't want to upgrade my solar service?

Another option is to do a service swap. If you have an electrical service and do not want to upgrade your service, you can swap out the main service panel for a "solar ready" combination service entrance device (CSED) that has a separate breaker connection for solar. For a typical 200A service, you can interconnect up to a 16-kW solar inverter.

Can an inverter be placed anywhere on a solar PV system?

Therefore an inverter output to 50A (125% of rated output current) can be placed anywhere on the bus because the sum of both sources would be 200A. Since the bus is rated for 200A, there is no potential for overload. Downsizing the main can be used in combination with the 120% rule to connect larger solar PV systems.

Which solar panel connector should I Choose?

Some of these include Amphenol, Tyco, Radox, and the outdated MC3 solar connector. To select the right solar panel connector for each application, installers consider different features and technical specifications.

Is it okay to add a booster line to the photovoltaic panels



Safe grounding system design for a photovoltaic power station

Despite the rapid increase in the number of photovoltaic power stations, their safe grounding system design is analyzed sparsely in literature [3]. This also applies for the metal ...

Can You Mix Solar Panels? - A Comprehensive Guide to ...

Monocrystalline solar panels are made from a single crystal of silicon and have a uniform black color. They are the most efficient type of panel but also the most expensive. Polycrystalline ...



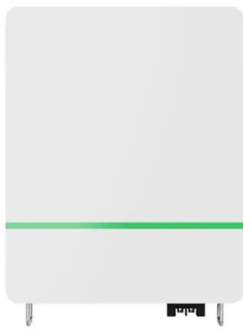
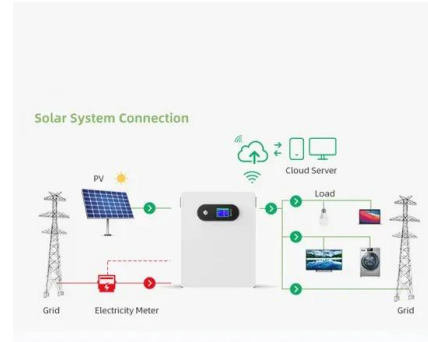
Low Capital Photovoltaic Panel Electrical Output-Booster System

solar-panel light spectrum booster systems alongside existing (or newly constructed) Solar PV arrays for utility and community solar applications. Spectrum adjustable LED light will be ...



Check list: The 10 most important points when installing cables in

How to attach cables to photovoltaic solar modules the right way. As global market leader in cable management, HellermannTyton offers solutions that help prevent photovoltaic panel ...

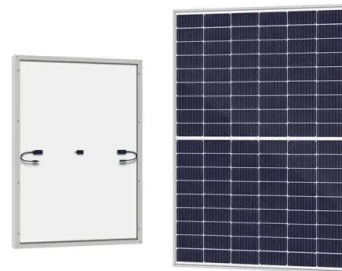


A Guide to Solar Inverters: How They Work & How to Choose Them

Solar panels, while important, are just one part of the solar array--the complete system that produces energy from sunlight. It can also be ideal in cases where you plan to add a battery ...

How to connect the booster valve to the solar panel line

1. Identify the existing solar panel system and booster valve specifications, 2. Gather the necessary tools and materials, 3. Disconnect power sources before starting the installation, 4. Establish a secure connection ...



Solar panel wiring basics: An intro to how to string solar panels

To have a functional solar PV system, you need to wire the panels together to create an electrical circuit through which current will flow, and you also need to wire the panels ...

An overview of solar photovoltaic panels' end-of-life material

Besides, in line with the EU policy on the treatment of waste, it gives priority to the recovery and recycling of materials. Even after adding 2.1 GW, the total solar capacity ...



A Beginner's Guide to UK Solar Panel Battery Storage

Buying Solar Panels; Photovoltaic Systems; Solar Panels in the UK; Photovoltaic Systems. A guide to solar panel batteries. by Edyta Pukocz a year ago 8 min read. How safe are solar batteries? Owing to a lack of ...

How To Divert Your Excess Solar PV to a Hot Water ...

Using a timer is a currently cheaper option, and with 10 kilowatts of solar panels, even on cloudy days much of the power is likely to come from your solar panels rather than the grid. One thing you could do is set the ...



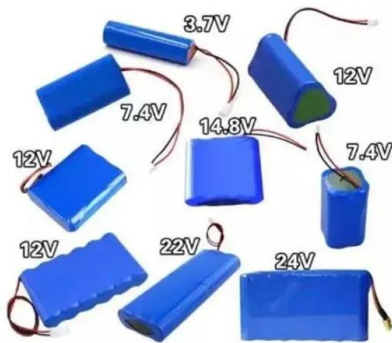
Solar Panel Disconnect (The Safe & Proper Way)

Once you feel safe and comfortable, remove the MC4 connectors from your solar panels, which will stop any current flowing through the panels. If you really want to make sure that there is no current flowing through ...



How to File the Federal Solar Tax Credit - A Step by Step Guide

Line 14 - Enter the number from line 3 of the worksheet. Example: 10,000. Line 15 - Enter the lesser number of line 13 or 14 (it depends on what your total tax bill is vs. your ...



Optimal Design Strategy of a Solar Reflector Combining Photovoltaic ...

This study explores the combination of photovoltaic (PV) panels with a reflector mounted on a building to improve electricity generation. Globally, PV panels have been widely ...

How To Increase Solar Panel Voltage

In solar panels, a small amount of electric voltage is generated when light hits the junction between a metal and a semiconductor (such as silicon) or the junction between two different semiconductors. Solar ...



Contact Us

For catalog requests, pricing, or partnerships, please visit:
<https://www.ssab-proiect.eu>