

European Solar and Energy Storage Solutions

Is Limin Solar Power Generation Real



Overview

Nowadays, for additional power sources, increased solar power generation has been widely installed in their own available spaces for road and rail transportation, which has attracted a great deal of attention. This paper reviews the current status of solar power generation and its integrated application in the transport sector.

Nowadays, for additional power sources, increased solar power generation has been widely installed in their own available spaces for road and rail transportation, which has attracted a great deal of attention. This paper reviews the current status of solar power generation and its integrated application in the transport sector.

Lumin delivers the intelligent energy management and optimized performance that homeowners expect from their solar and storage setup – resulting in fewer batteries, lower costs, greater control, and happier customers.

In the future, increasing the application of renewable energy will enable railways to make a significant contribution to zero-emission mobility, even from a full life cycle perspective. There are many types of new energy sources, among which wind power and photovoltaic (PV) power generation systems are more mature.

environmentally friendly solar-piezoelectric hybrid power plant model, which uses only renewable.

renewable power generation for energy transformation. It is confirmed that solar energy-powered road and rail transportation is a promising approach for sustainable transportation with more

What is Lumin energy management?

Lumin delivers the intelligent energy management and optimized performance that homeowners expect from their solar and storage setup – resulting in fewer batteries, lower costs, greater control, and happier customers. Get the latest news and updates from Lumin. Lumin tests new energy load management solution in certain markets.

Should solar PV be introduced into the railway energy supply system?

Solar PV generation is concentrated in the daytime period, matching the railway load, so it is appropriate to introduce solar PV generation into the railway's energy supply system (IEA,2019). Therefore, a series of railway system transformations are needed to fully exploit this advantage.

Are solar PV resources better than wind farms?

In addition, there have been cases of the abnormal operation of wind farms related to the deterioration of power quality caused by electrified railways in China [7, 8]. By contrast, solar PV resources have several advantages: small components, a flexible layout, mature technology and a relatively stable energy supply.

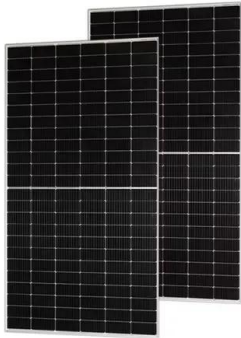
What are Lumin smart panels?

Lumin tests new energy load management solution in certain markets Called smart panels, these products are a high-tech update of the metal circuit-breaker boxes that have been the energy nerve center of American homes for decades.

How much solar power does Beijing South Station generate a year?

In 2008, a 220 kW rooftop solar power generation in Beijing South Station was operated [11,12]. It is estimated to generate 223 MWh per year for the use of the rail station itself. Then, a larger 10 MW solar power generation was installed on the canopy and rooftop of Hangzhou East Station and began operation in 2013 .

Is Limin Solar Power Generation Real

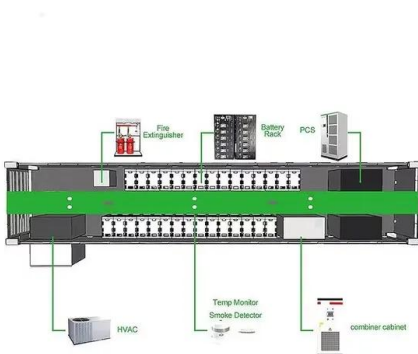


Lumin Smart Panel Overview: How It Works And Who It's For

Lumin Smart Panel cost and availability. The Lumin Panel is available at retail prices of between \$2,100 and \$2,900 from sources like NAZ Solar Electric and Signature Solar and can also be ...

Lumin Edge. Modular load control for a flexible, electrified future.

Step 1: Enroll in load management utility programs like demand response. Step 2: Connect Edge Hub to your home's router via ethernet. Step 3: Add as many Edge Controllers as desired to ...



SWOT analysis for orchestrated development of a solar ...

In the future, increasing the application of renewable energy will enable railways to make a significant contribution to zero-emission mobility, even from a full life cycle perspective. There are many types of new energy ...

Epever Tracer 1210AN Solar Charge Controller Real ...

Epever Tracer 1210AN Solar Charge Controller
 Real MPPT 10A Auto 12/24V Epever Solar Charge
 Controller MPPT 10A Tracer 1210AN Rated
 Current Charge: 10A Rated Discharge Current:
 10A Battery Voltage Range: 8-32V ...



An Integrated System for Monitoring & Control of Solar Panel ...

A transition from static solar panels to dual-axis solar panels increases the entire output power prediction of solar panels. Given it, an integrated system for monitoring and control of solar ...

Lumin's Smart Energy Platform Becoming An Essential Piece Of ...

Alex Bazhinov, Lumin Founder & CEO, says the company is just getting started. "We created the platform that transforms the dull gray metal box in the basement-the ordinary ...

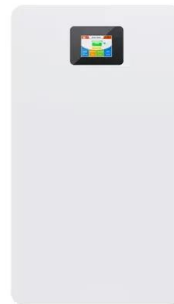


ABB white-labels Lumin smart panels for its customer ...

Enabling energy optimization, circuit scheduling and real-time control in one universally compatible package, the panel is suitable for new and retrofit installations. As Managing Editor for Solar Power World, she ...

Solar-powered rail transportation in China: Potential, scenario, and

Focused on the usage of solar power generation in the rail sector, the available solar energy on the covered land and trackside land in the rail itself is assessed for the rail ...



Contact Us

For catalog requests, pricing, or partnerships, please visit:
<https://www.ssab-proiect.eu>