

European Solar and Energy Storage Solutions

Ic2 power storage Benin

LPW48V100H
48.0V or 51.2V



Overview

What is IC2 energy storage upgrade?

The Energy Storage Upgrade is an upgrade for IC2 machines used to increase the amount of internal energy it can store. Each upgrade increases the machine's storage by 10,000 EU. The Energy Storage Upgrade is often used in combination with the Overclocker Upgrade, due to the fact that the Overclocker Upgrade makes the machine consume more energy.

How many IC2 power storage units are there?

There are four power storage units from IC2; the most basic being the BatBox, then the CESU, followed by the MFE, and finally, the grand daddy MFSU. The BatBox can store up to 40,000 EU at one time. It outputs and inputs at 32 EU/t, or Low Voltage, which is effective for the basic IC2 machines. The second tier of storage is the CESU.

How many EU storage blocks does IC2 have?

The button in the upper right cycles through the available options for the storage block's redstone behavior (though the last two options are output behavior). IC² currently has four EU storage blocks. Stores more EU than the sum of its components (30K). Before 2.x, used Insulated Copper Cable instead of tin in recipe.

How many items can IC2 charge?

The new and improved IC2 Charging Bench! The charging bench allows you to charge up to 12 items simultaneously! It comes and below, but not above. If you want to charge your Quantum armor you'll need high-power equipment, sadly. :) base energy storage of 40,000 EU. 1 Batbox 3 Insulated Copper Cable 1 Electronic Circuit 4 Wooden Planks.

What is power tier in IC2?

In IC², power tier refers to a range of EU per tick (EU/t) by which blocks and

items are grouped, which defines certain ways they behave. Incorrectly matching power tiers between equipment usually results in either a lack of functionality or a surplus of explosions. (Even if it's only one, any number of unwanted explosions is a surplus!).

How does IC2 measure energy?

IC2 provides its own power system based off of Energy Units, or EU. EU is measured in two different ways: EU/t, or Energy Units per Tick - This is the measurement of the rate of energy production/consumption. EU/p, or Energy Units per Packet - This is measurement of the size of the packet carrying EU.

IC2 power storage Benin

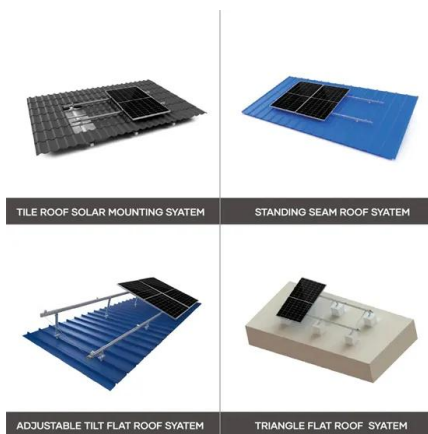
Efficient IC2 power set-up

If you automate the system, you may want to add more energy storage upgrades (cheap and easy to make, even with GregTech enabled), or make sure your system will never try and dump a bunch of stacks into your system otherwise you go back to around overclocker x4 speed (at overclocker x12 power cost, ouch).



Tier System

Powering a machine or storage unit with too much EU/t will result in the machine exploding. For example, trying to power a Macerator (tier 1) with 128 EU/t (tier 2) will result in the Macerator exploding, destroying it. Transformer Upgrades can be used to increase the power tier of a machine by power tier per upgrade item.



IndustrialCraft 2/Guide/Energy Storage Upgrade

Energy Storage Upgrades add 10,000 EU per upgrade to a machine's internal buffer. They do not increase the energy input capability of the machine, so a tier 1 machine would still only be able to take 32 EU/t, but it would be able to store much more energy.

How do i convert EU to RF or FE in 1.19.2 IC2 : r/feedthebeast

sorry if i used the wrong flag to ask this but i really do not know any other place to ask this i made a personal modpack for myself to play ic2, mekanism, refined storage, electrodynamics and assembly line machines in 1.19.2 but i can't find a way to convert EU to RF or FE in this game version, i tried to use universal cables in some machines of ic2 and it didn't work, i tried to ...



Powering refined storage : r/allthemods

Batbox > Universal Cable > Flux Duct > Refined Storage Controller . . . As a side note this is a problem you will have everytime you try to use power generators from IC2 to power almost every other mod, which is why I recommend switching off IC2 power to something else, like Steam dynamos or thermal generators - or even nuclear reactors if you

Mining Laser , Industrial Craft 2 Wiki , Fandom

The Mining Laser is a powerful high-tech tool with a variety of applications. It can be used as an insta-mining tool with a relatively low EU consumption, as well as a high-power AoE block remover, or even as a weapon. All blocks destroyed by the Laser are dropped, with the exception of non-drop blocks like Glass or Leaves. However, due to the destructive nature of the Laser, ...



[Enigmatica 2: Expert] Best source of power? : r/feedthebeast



I like NC nuclear after that. Standard reactor can handle IC2 (for plutonium), pure uranium (for extreme cyanate) or NC fuels. People then seem to poke smaller / larger NC fusion for neutron fluid, and Env Tech solar for lazy power. I also have a mek fusion but it's a side grade. Good to ensure NC fusion always has superconductor power or the like.

Power tier , Industrial Craft 2 Wiki , Fandom

In IC², power tier refers to a range of EU per tick (EU/t) by which blocks and items are grouped, which defines certain ways they behave. Incorrectly matching power tiers between equipment usually results in either a lack of functionality or a surplus of explosions. (Even if it's only one, any number of unwanted explosions is a surplus!) Machines (if they are EU acceptors or producers



EU storage block

An EU storage block, as its name implies, is a block that accepts, stores, and outputs EU. This is accomplished through either in-world cable connections or the block's GUI. Use and notes . When placed, a storage block's output face is oriented toward the player. This is indicated by a dot (observe the images in the table below).

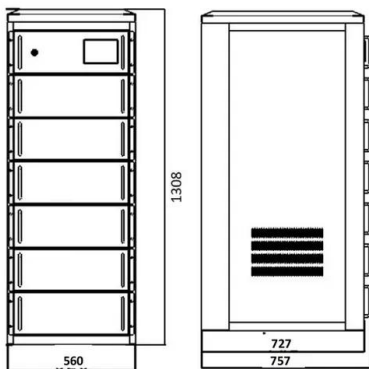
Power tier

In IC², power tier refers to a range of EU per tick (EU/t) by which blocks and items are grouped, which defines certain ways they behave. Incorrectly matching power tiers between equipment usually results in either a lack of functionality or a surplus of explosions.



BatBox

This page is about the IndustrialCraft 2 BatBox. For other Battery Boxes, see Battery Box. The BatBox is a Tier 1 energy storage unit from IndustrialCraft 2 that stores EU. The BatBox is capable of storing 40,000 EU and outputs 32 EU/t from the dotted side. It can be removed with use of a wrench with 95% safety; using an Electric Wrench in lossless mode will always ...



EU storage block , Industrial Craft 2 Wiki , Fandom

An EU storage block, as its name implies, is a block that accepts, stores, and outputs EU. This is accomplished through either in-world cable connections or the block's GUI. When placed, a storage block's output face is oriented toward the ...



EU storage block , Industrial Craft 2 Wiki , Fandom

An EU storage block, as its name implies, is a block that accepts, stores, and outputs EU. This is accomplished through either in-world cable connections or the block's GUI. When placed, a storage block's output face is oriented toward the player. This is ...



GitHub

You will now find contained herein for your crafting enjoyment the following high quality devices: The Charging Bench, the Battery Station, and the Storage Monitor (plus the Adjustable Emitter for creative play). The new and improved IC2 Charging Bench! ----- The charging bench allows you to charge up to 12 items simultaneously!



IC2 Power Problems : r/feedthebeast

For now, make sure you use the appropriate cable in the appropriate place. Also, Jeffroe888 is right about bat boxes. Once you've upgraded your power storage and understand how to use transformers to get the voltage you want, you should never have to mess with small storage devices again. One other note, it looks like you're going solar.

(e2e) ic2 power? : r/feedthebeast

Not for starting ic2, you need your machines running with something to be able to get solar panels, the other option would be either lava for a magmatic gen from ic2 or a nuclear reactor;

it's not like ic2 has tons of options for power, and only with mekanism cables you can convert from your main source.



 **LFP 12V 100Ah**

**FLEXIBLE SETTING OF
MULTIPLE WORKING MODES**



Quarry Power? : r/tekkit

They convert Ic2 power (EU) to Buildcraft power. The advantages of using Ic2 power is that all you need is one power source, not several different kinds. Also, you can actually store EU; with BC power you cannot. One energy link will power a ...

**Energy Storage Upgrade
(IndustrialCraft 2)**

The Energy Storage Upgrade is an upgrade for IC2 machines used to increase the amount of internal energy it can store. Each upgrade increases the machine's storage by 10,000 EU. The Energy Storage Upgrade is often used in combination with the Overclocker Upgrade, due to the fact that the Overclocker Upgrade makes the machine consume more energy.



**IC2 power conversion options.
: r/feedthebeast**

IC2 power conversion options. [Infinity Evolved Expert Mode] I'll also note that EU Storage Blocks and Transformers will store power up until they can send a full-sized packet for their tier (to minimize power loss in cables). As a simpler

example, many machines start out with 32 EU/p limits. BatBoxes output 32 EU packets (and at most once



[IC2] How does power loss work over distance? : r/feedthebeast

Insulations don't affect cable loss any more. IC2 calculates the path with the least loss which sometimes does not mean the shortest path. Loss is also rounded down so if are producing 1eu/t you are using copper cables the first 4 cables do not provide any loss because $0.2+0.2+0.2+0.2=0.8$ meaning it is rounded down to 0 and only in the fifth will you actually get ...



Best form of ic2 power? (BESIDES nether lava) : r/feedthebeast

Start with the small stuff and scale up. If you want "constant power", just count how much EU/t your setup requires. A Minecraft day (20 minutes) has 24000 ticks. Count 12000 times the EU/t and, do that much storage. As long as it doesn't rain, you've got power 24/7. (A batbox, 40 000 eu, can sustain 3.3 eu/t for a complete night.

Contact Us

For catalog requests, pricing, or partnerships, please visit:
<https://www.ssab-proiect.eu>