

## European Solar and Energy Storage Solutions

# How to match the controller with the photovoltaic panel



## Overview

---

To effectively match solar energy systems with controllers, it is crucial to consider 1. system compatibility, 2. controller type, 3. installation requirements, and 4. performance optimization.

To effectively match solar energy systems with controllers, it is crucial to consider 1. system compatibility, 2. controller type, 3. installation requirements, and 4. performance optimization.

Step-by-Step Guide to Connecting Solar Panels to an MPPT Charge Controller

1. Mounting the MPPT Charge Controller Select a suitable location for mounting the MPPT charge controller near the battery bank. Ensure proper ventilation and easy access for maintenance.
2. Identifying Input and Output Terminals .
3. Connecting Solar Panels to the Input Terminals .
4. Verifying Polarity and Secure Connections

## How to match the controller with the photovoltaic panel



### Connect Solar Panels To An Inverter: A Step-by-Step ...

PWM controllers reduce the voltage of the solar panel to match the voltage of the battery bank, which results in a loss of power. MPPT controllers, on the other hand, convert the excess voltage into additional current, which results in more ...

### Solar Charge Controller Guide , All You Need to Know

Solar charge controllers are an invaluable piece of equipment that help maximize solar output in residential and commercial photovoltaic systems, ensuring effective usage of these forms of renewable energy. In this ...



### A Guide to Solar Inverters: How They Work & How to ...

A single solar panel with a drop in energy production, such as when shading occurs, can decrease the power production for the entire string of panels. Generally, you want the efficiency rating of the inverter to match the efficiency ...

### Solar panel wiring basics: How to wire solar panels

Key electrical terms for solar panel wiring. In

order to understand the rules of solar panel wiring, it is necessary to understand a few key electrical terms -- particularly voltage, current, and ...



## Solar Charge Controller 101: A Beginner's Guide

With Pulse Width Modulation controllers, the voltage from the solar panel has to match the voltage from the battery. If a solar array has a voltage of 17V and the battery bank has 14V, the solar ...

## PWM Solar Charge Controller - Working, Sizing and ...

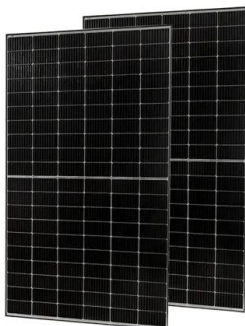
The best matching panel for a PWM controller is a panel with a voltage just above provided for charging the battery and taking into account the temperature, usually, a board with a  $V_{mp}$  (maximum voltage) of about 18V to charge a 12V battery.



 LFP 12V 200Ah

## How to select a solar charge controller for your PV ...

PWM types are relatively simple, using a switch between the PV array and the battery. The switch is able to open and close rapidly, thus being able to pulse or "throttle back" the electricity coming from a solar panel in ...



## Solar panel wiring basics: How to wire solar panels

Key electrical terms for solar panel wiring. In order to understand the rules of solar panel wiring, it is necessary to understand a few key electrical terms -- particularly voltage, current, and power -- and how they relate to each other.

...



## Solar Panel To Battery Ratio (Kw + Watts)

Solar panel battery sizes: 100-watt solar panel. Maximum 80-100ah, but ideally a 50ah battery. 200-watt solar panel. Ideally, a battery of 100-120ah but could work for a 150ah battery too. 300-watt solar panel. Best for ...

## Solar Charge Controller 101: A Beginner's Guide

With Pulse Width Modulation controllers, the voltage from the solar panel has to match the voltage from the battery. If a solar array has a voltage of 17V and the battery bank has 14V, the solar controller can only use 14V reducing the ...



## Choosing and Sizing Batteries, Charge Controllers ...

Sophisticated electronics are needed in MPPT controllers to do this, which explains their higher price. There is a significant pay-off though: MPPT controllers are 93-97% efficient in converting power. Calculation. Once you have sized ...



## MPPT Solar Charge Controller - Working, Sizing and ...

As solar panel wattage and voltage rises, more and more panels need MPPT charge controllers. With MPPT controllers, the incoming solar power passes in at a comparatively higher voltage, and the controller reduces the voltage for the ...



## How to choose a Solar Charge Controller :: 12V solar ...

NB: In some rare cases, a solar panel can be connected directly to a battery, without a controller. This can be achieved if the nominal voltage of the panel is lower than 17-18V, and if the solar panel is a lot smaller than the charging ...

## Contact Us

For catalog requests, pricing, or partnerships, please visit:  
<https://www.ssab-proiect.eu>