

European Solar and Energy Storage Solutions

How to locate the photovoltaic panel columns



Overview

Determining Module Inter-Row Spacing. When designing a PV system that is tilted or ground mounted, determining the appropriate spacing between each row can be troublesome or a downright migraine in the making. However, it is essential to do it right the first time to avoid accidental shading from the modules ahead of each row.

Determining Module Inter-Row Spacing. When designing a PV system that is tilted or ground mounted, determining the appropriate spacing between each row can be troublesome or a downright migraine in the making. However, it is essential to do it right the first time to avoid accidental shading from the modules ahead of each row.

All PV modules (solar panels) should be certified to IEC, CE, and UL standards. Beyond that, potential modules should be assessed against the following metrics: Levelized cost of electricity, quality, performance, power tolerance, flash tests, temperature coefficient, degradation, bypass diodes, warranty terms, maximum system voltage, and any .

The optimal tilt angle of photovoltaic solar panels is that the surface of the solar panel faces the Sun perpendicularly. However, the angle of incidence of solar radiation varies during the day and during different times of the year.

Understand how to compare multiple manufacturers using their spec sheets. Use spec sheets to calculate solar panel power and efficiency. Learn about the unique features of the solar panels you're considering. Use spec sheets to determine which solar panels are best for your project.

A Solar Cell block from the Simscape™ Electrical™ library models the solar cell strings. To specify the size of the PV module, define the number of cells, N_s_cell and N_p_cell , in the modules. To replicate a commercially available solar panel, the solar PV module parameters are directly obtained from a solar panel manufacturer datasheet.

How to locate the photovoltaic panel columns



How Do Solar Panels Work? (Everything You Need To Know)

Solar Panel Efficiencies. Solar technology is more efficient than many people believe. Solar cells don't need bright sunshine to work and can produce electricity even on a cloudy day. Of ...

Solar Panel Output Voltage: How Many Volts Do PV Panel ...

If you know the number of PV cells in a solar panel, you can, by using 0.58V per PV cell voltage, calculate the total solar panel output voltage for a 36-cell panel, for example. You only need to ...



How To Mount Photovoltaic Solar Panels To A Metal ...

In the photo above, a ladder was used to slide the PV panels to the roof. Photovoltaic (PV) panels produce all of the electricity for this straw bale hybrid home from sunlight. All of the PV panels are permanently attached to the ...

How Do Solar Panels Work? (Everything You Need To ...

Solar Panel Efficiencies. Solar technology is more

efficient than many people believe. Solar cells don't need bright sunshine to work and can produce electricity even on a cloudy day. Of course, they are most efficient in bright sunlight and ...

Lithium Solar Generator: \$150



Solar Panel Orientation Calculator

Select your timezone and enter your coordinates (latitude and longitude) to calculate the optimal orientation for fixed solar panels, twice adjusted solar panels, quarterly (seasonally) adjusted solar panels, and monthly ...

Solar mounting structure construction methods -- ...

RatedPower can help design your ground-mounted solar array. Solar panel mounting systems play a key role in ensuring that photovoltaic (PV) installations operate at their best. They provide the structure needed to hold ...



RatedPower.com



Solar Panel Steel Structure: A Comprehensive Guide

Solar panel steel structures are a vital component of the solar panel installation process. So, providing a safe and efficient way to generate clean energy. By understanding the benefits, design considerations, ...

Structures for photovoltaic solar panels

Solar panel frames are systems specifically designed to hold photovoltaic modules in place and provide the optimal tilt to capture the maximum amount of solar energy. These structures are characterized by their ...



Ground Mounted PV Solar Panel Reinforced Concrete ...

A ground mounted solar panel system is a system of solar panels that are mounted on the ground rather than on the roof of buildings. Photovoltaic solar panels absorb sunlight as a source of ...

Step-by-Step Guide: How to Connect Solar Panels and Inverters - ...

They work together to convert sunlight into electricity that can be used to power homes, businesses, and other applications. When it comes to choosing the right solar panel and ...



Solar Racking Made Simple: What You Need to Know About

Installing a solar energy system can be a challenging task. A home solar panel installation will include up to or more than a thousand parts so gathering the right component parts can take a ...



pv-row-to-row-spacing

PV Row to Row Spacing. If your system consists of two or more rows of PV panels, you must make sure that each row of panels does not shade the row behind it. To determine the correct row-to-row spacing, refer to the figure above.



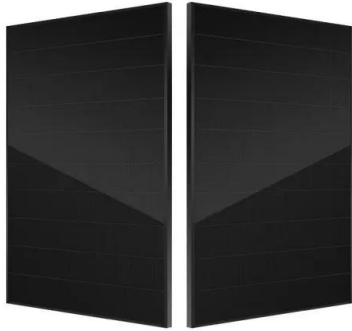
Series, Parallel & Series-Parallel Connection of PV Panels

Solar Module Cell: The solar cell is a two-terminal device. One is positive (anode) and the other is negative (cathode). A solar cell arrangement is known as solar module or solar panel where ...

Solar panel inclination angle, location and orientation

Understand how to compare multiple manufacturers using their spec sheets. Use spec sheets to calculate solar panel power and efficiency. Learn about the unique features of the solar panels you're considering. Use ...





How To Mount Photovoltaic Solar Panels To A Metal Roof

In the photo above, a ladder was used to slide the PV panels to the roof. Photovoltaic (PV) panels produce all of the electricity for this straw bale hybrid home from sunlight. All of the PV panels ...

Contact Us

For catalog requests, pricing, or partnerships, please visit:
<https://www.ssab-proiect.eu>