

European Solar and Energy Storage Solutions

How to install solar power generation in an elevator room



Overview

Installing solar lamps in elevator buildings involves several key steps that must be carefully executed to ensure efficiency and safety. 1. Choose the type of solar lamp suited for the environment, 2. Assess the structural integrity of the building to support installation, 3. Ensure adequate sunlight exposure to maximize solar energy absorption, 4.

Installing solar lamps in elevator buildings involves several key steps that must be carefully executed to ensure efficiency and safety. 1. Choose the type of solar lamp suited for the environment, 2. Assess the structural integrity of the building to support installation, 3. Ensure adequate sunlight exposure to maximize solar energy absorption, 4.

Installing solar lights in elevator buildings involves several steps to ensure efficient energy use and maximum illumination. Here are the essential points to consider: 1. Evaluation of the installation area, 2. Selection of appropriate solar lighting fixtures, 3. Proper mounting techniques, 4. Regular maintenance and monitoring.

Project Objective: Installation of solar panels, an inverter, and an energy storage system for powering the building's elevator. Location: 10-story residential building with 50 occupants. Goal .

Together, these upgrades reduced total standby power draw by about 75% and brought the net-zero concept within reach. To offset the elevator's energy consumption, we installed a rooftop solar photovoltaic (PV) array on Fraunhofer USA CSE's Boston headquarters above the elevator hoistway.

A regenerative solar-powered elevator is an elevator that is powered by solar energy and has a regenerative braking system that recovers energy when the elevator is descending. Here are the steps to implement such an elevator: Do elevators need energy?

Paradoxically, elevators require energy even when they aren't in use: when cabs sit idle after the morning rush, for example, elevator systems must be left energized so that they're ready for the next passenger call.

What is a room-less elevator?

The room-less elevator consumes less vertical and horizontal space; without a machine room, a building's flat roof can more easily accommodate expansive green areas with plantings and solar panels. These days, manufacturers are chiefly interested in regenerative drive systems: elevators that recover some of the energy they consume.

How much does elevator installation cost?

Installation prices for the tallest buildings can range from \$500,000 for single-car elevators to more than \$1 million for double-deckers (which stop on alternate floors, reducing the number of stops per run), according to a 2017 global report by Orbis Research.

Do tall buildings need elevators?

The taller the building, the more elevator shafts needed, each with their own motor; extra tall buildings often require a second sky lobby halfway between the ground floor and the roof. In fact, elevators typically account for between 2 percent and 10 percent of a building's energy use.

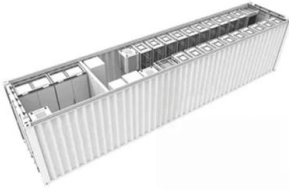
Is solar PV system at roof top beneficial for urban residential areas?

The objective of this paper is to highlight the benefit and scope of introducing solar PV system at Roof top on urban residential areas to meet some partial demand of energy especially elevator & common load like security light, guard room load, water pump of the building. This will reduce the pressure on the existing grid network.

Are small elevators a good idea?

Smaller elevator mechanisms, like those devised by Otis, replace conventional ropes with flat belts, which decreases weight and reduces air resistance and heat friction. These solutions appeal to consumers, but they can also offer building owners significant reductions in energy expenses, and a more elegant aesthetic indoors.

How to install solar power generation in an elevator room



How are solar panels installed? , 11 steps explained

In this guide, we'll explain a typical solar panel installation from start to finish, as well as what all the hardware does, and where on your property you can install the panels. If you're interested in how much you could save ...

An Analysis of Regenerative Solar Powered Elevator

A regenerative solar-powered elevator is an elevator that is powered by solar energy and has a regenerative braking system that recovers energy when the elevator is descending. Here are the steps to implement such an elevator:



THE NO-NONSENSE GUIDE TO NFPA 110 COMPLIANCE FOR ...

Essentially, the emergency power supply (EPS) is the source of electrical power (i.e., generator) used in your backup power system (3.3.3). It is independent of your primary source of power, ...

Transform Your Living Room: A Step-By-Step Guide To Installing An Elevator

Installing an elevator in a living room can seem like a daunting task, but with the right planning and execution, it can be a highly beneficial addition to your home. Whether ...



Home Elevator Installation Guidelines (Everything You Need To ...)

For an elevator using hydraulic power, 2-by-12-inch pine studs should be installed up and down the hoistway. These should be spaced 12 inches from centerline of rail wall and attached ...



Harnessing the Sun: The Rise of Solar-Powered Elevators

Solar-powered elevators represent a convergence of sustainability and innovation in the realm of vertical transportation. By harnessing the boundless energy of the sun, these elevators offer a clean, efficient, and ...



Tata Power Solar Rooftop Panel for Home Price in India

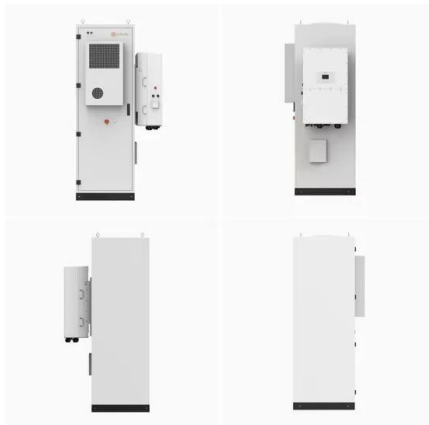
India is on the cusp of a solar revolution and we at Tata Power Solar have been right at the forefront, leading the move towards sustainable energy solutions. Investing in rooftop solutions leads to great savings, while protecting the ...



Ecofriendly Elevator Solar Power System Design And ...

The focus in this paper is to design a solar power system that can be used to effectively power an elevator. In order to guarantee constant power supply without loss of load, a backup generator

...



Homeowner's Guide to Going Solar , Department of Energy

There are a number of mapping services that have been developed by SETO awardees that will help you determine if your roof is suitable for solar and can even provide you with quotes from

...

How To Install Solar Panels (2024 Guide)

We recommend using a certified solar installation company to ensure a safe and proper installation. When performing a DIY solar installation, be sure to select the optimal angle for your solar panels. For a visual walk ...





Can We Run Lift Using Solar Power? General Discussion

So, How Reliable Is Solar Power For Running A Lift? The reliability of solar power for running a lift depends on several factors, including the available sunlight, system design, and battery storage capacity. In regions ...

Solar PV System Design and Installation at Roof Top to ...

The objective of this paper is to highlight the benefit and scope of introducing solar PV system at Roof top on urban residential areas to meet some partial demand of energy especially elevator



The Electrical Ups and Downs of Elevator Design

The elevator equipment room that serves a hydraulic elevator is almost always located on the lowest floor adjacent to the elevator shaft. A traction elevator's equipment room is typically located at the top of the building, ...

Contact Us

For catalog requests, pricing, or partnerships, please visit:
<https://www.ssab-proiect.eu>