

European Solar and Energy Storage Solutions

How to install a right angle half photovoltaic panel



Overview

How do I choose the right solar panel angle?

To find the optimal angle for your solar panels, do a Google search for the latitude of your home address or your zip code. Typically, an ideal angle for your solar panels will be equal or close to the latitude of your home. However, proper solar panel angle will fluctuate over the course of the year.

What is the tilt angle of solar panels?

If the sun is high in altitude, then the tilt angle would be small and solar panels would be more horizontal. For low altitudes, the tilt angle is large, and solar panels are vertical. The tilt angle for solar panels is dependent on the latitude of the sun. Fixed solar panels are a convenient and preferred choice.

Should solar panels be angled on a low angled roof?

Flush-mounting solar panels on a low-angled roof will produce less electricity and reduce solar savings. To receive exceptional solar savings, you'll want your solar panels to be angled in a way that optimizes the sunlight exposure for that location. This is done by tilting your solar panels at the same angle as the latitude of your home.

How to choose a solar panel installation?

When considering a solar panel installation, you'll want to prioritize solar panel direction over angle. While having the optimal tilt can improve output by 5-8%⁴, orienting your system southward can improve efficiency by up to 30% or more. Want to learn more about solar panels?

.

Can solar panels be installed at a fixed angle?

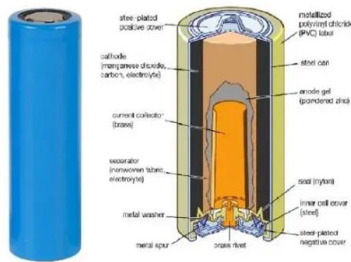
However, most solar panels installed for home use are mounted on the roof at a fixed angle. Meaning, the process of changing the angle of your solar panels

with each season can be quite difficult. There are systems that can be installed that will track the axis of the sun and adjust the angle over time.

What is the best angle for solar panels in Houston?

According to our calculator, the best angle for solar panels in Houston is 26.5° from horizontal. 5. Scroll down to get your optimal tilt angles by season and by month. Our calculator also calculates your best solar panel angles by season and by month, in case you're interested in adjusting the angle of your panels throughout the year.

How to install a right angle half photovoltaic panel



Solar panel angle. How to calculate the angle of solar ...

Source: How does the angle between the sun and the horizon would impact the output of solar panels When it comes to solar panel angle and its calculation, it must be noted that there are two different parameters referred to in this ...

Solar Panel Wiring Basics: Complete Guide & Tips to ...

Photovoltaic (PV) systems are one of the most important renewable energy sources worldwide. Learning the basics of solar panel wiring is one of the most important tools in your repertoire of skills for safety and ...



The Best Angle for Solar Panel Installation

The Best Angle for Solar Panel Installation. To maximize the potential of your solar panels, they must be placed at the right angle to generate the optimal amount of electricity for your home. That "ideal" angle depends ...



Solar Panel Angle: how to calculate solar panel tilt ...

How to calculate the Solar Panel Angle of your

solar system? The solar panel angle of your solar system is different depending on which part of the world you are. Solar panels give the highest energy output when they are ...



What is the Best Angle for Solar Panels? Maximizing ...

The optimal solar panels angle allows the photovoltaic cells to capture the most direct sunlight throughout the year. Factors like geographic location, season, tracking capability, and obstructions impact the ideal tilt and ...

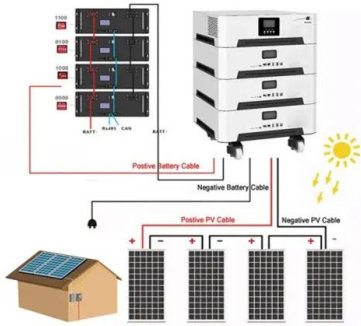
The Best Angle For Solar Panels: How To Boost Efficiency

Making sure your roof is suitable for solar panel installation is the first big step for homeowners looking to switch to solar energy. Understanding what the best angle for solar panels is key to maximizing energy production ...



How to Calculate Solar Panel Tilt Angle

With this chart, you can calculate the optimal tilt angle of your solar panel for a specific location and season. To determine the tilt angle using this method, you need to comprehend the installation location's altitude and ...



Solar Panel Angle: Definition, and How to Calculate

Solar panel angle is the tilt at which a solar panel is installed stalling solar energy is more cost-effective and energy-efficient if you select the right angle for the solar panels. The solar panel

...



Best Practices for Installing Bifacial Solar Panels

6. Adjust the Tilt Angle for Bifacial Optimization. The optimal tilt angle for bifacial panels may differ from monofacial installations. In many cases, a slightly steeper tilt (5-10 degrees more than the latitude angle) can improve ...



Solar panel angle. How to calculate the angle of solar panel

Source: How does the angle between the sun and the horizon would impact the output of solar panels When it comes to solar panel angle and its calculation, it must be noted that there are ...





How to calculate the best solar panel angle and installation guide

For due south (0° azimuth angles), the insolation amount increases to the maximum when the solar panel angle of tilt gradually transitions from horizontal (0° azimuth to ...

Photovoltaic Basics (Part 1): Know Your PV Panels for ...

However, the efficiency of this type of photovoltaic panel is limited by thermal agitation; otherwise, it would rise as high as 50%. Next Steps. So far, we have reviewed the types of photovoltaic panel available on the ...



Contact Us

For catalog requests, pricing, or partnerships, please visit:
<https://www.ssab-proiect.eu>