

European Solar and Energy Storage Solutions

How to determine the attenuation value of photovoltaic panels



Overview

PV cells are manufactured as modules for use in installations. Electrically the important parameters for determining the correct installation and performance are: 1. Maximum Power - this is the maximum power output of the PV module (see I-V curve below) 2. Open circuit voltage - the output voltage of the PV cell.

Nominal rated maximum (kWp) power out of a solar array of n modules, each with maximum power of W_p at STC is given by: The available solar.

As the temperature of PV cells increase, the output drops. This is taken into account in the overall system efficiency (η), by use of a.

To understand the performance of PV modules and arrays it is useful to consider the equivalent circuit. The one shown below is commonly.

Efficiency: measures the amount of solar energy falling on the PV cell which is converted to electrical energy. Several factors affect the measurement of PV efficiency, including: 1. wavelength - PV cells respond differently to.

To understand the performance of PV modules and arrays it is useful to consider the equivalent circuit. The one shown below is commonly employed. PV module equivalent circuit. From the equivalent circuit, we have the following basic equations: - load current in Amperes - voltage across the shunt branches - current through the shunt resistor.

To understand the performance of PV modules and arrays it is useful to consider the equivalent circuit. The one shown below is commonly employed. PV module equivalent circuit. From the equivalent circuit, we have the following basic equations: - load current in Amperes - voltage across the shunt branches - current through the shunt resistor.

This article demonstrates the exciting possibility of using PV power generation data to determine solar cell parameters, simulate IV curves, understand PV degradation, and identify faults. It shows how detailed information on the electrical performance of a crystalline silicon PV module can be extracted using a simple metaheuristic algorithm .

Estimates the energy production and cost of energy of grid-connected photovoltaic (PV) energy systems throughout the world. It allows homeowners, small building owners, installers and manufacturers to easily develop estimates of the performance of potential PV installations.

A new measurement strategy and system for the measurement of atmospheric attenuation in solar plants is presented. It is based on the measurement, at two different locations on the plant, of the VIS and IR spectra of the sun radiation reflected by a white diffuser screen.

This article examines how the efficiency of a solar photovoltaic (PV) panel is affected by the ambient temperature. You'll learn how to predict the power output of a PV panel at different temperatures and examine some real-world engineering applications used to control the temperature of PV panels. What is photovoltaic (PV) power prediction?

Abstract: Photovoltaic (PV) power prediction is a key technology to improve the control and scheduling performance of PV power plant and ensure safe and stable grid operation with high-ratio PV power generation.

How does temperature affect the voltage output of a PV panel?

The voltage output is greater at the colder temperature. The effect of temperature can be clearly displayed by a PV panel I-V (current vs. voltage) curve. I-V curves show the different combinations of voltage and current that can be produced by a given PV panel under the existing conditions.

How do you calculate a PV system?

A crucial calculation involves the current flowing through your PV system, defined by Ohm's law: Where: For a 7.3 kW system operating at a voltage of 400 V: $I = 7300 / 400 = 18.25$. 6. Battery Capacity Calculation If you're planning to include a storage system, calculating the battery capacity is essential.

What is a PV panel I-V curve?

The effect of temperature can be clearly displayed by a PV panel I-V (current vs. voltage) curve. I-V curves show the different combinations of voltage and current that can be produced by a given PV panel under the existing conditions. Two sample I-V curves at different temperatures for the educational modules are shown in Figure 2.

How does temperature affect the efficiency of PV cells?

Software is normally used for the calculation of this or the use of correction coefficients from the concerned location. As the temperature of PV cells increase, the output drops. This is taken into account in the overall system efficiency (η), by use of a temperature derating factor η_t and is given by:.

How does weather affect a PV panel?

Because the current and voltage output of a PV panel is affected by changing weather conditions, it is important to characterize the response of the system to these changes so the equipment associated with the PV panel can be sized appropriately.

How to determine the attenuation value of photovoltaic panels



Parameters of a Solar Cell and Characteristics of a PV Panel

Related Post: How to Design and Install a Solar PV System? Working of a Solar Cell. The sunlight is a group of photons having a finite amount of energy. For the generation of electricity by the ...

Calculating Solar PV String Size - A Step-By-Step ...

The voltage of a solar panel is not fixed. As the temperature of a panel increases, its voltage decreases, and as its temperature decreases, its voltage increases. The rate at which the open circuit voltage of a solar panel will change as its ...



A quick comparison model on optimizing the efficiency of photovoltaic

Few scholars study light efficiency of solar-cell arrays in theory, while it is difficult to experimentally determine the maximum capacity of a photovoltaic panel to collect ...



How to Calculate Charging Time of Battery by Solar Panel: A

3 ???· Discover how to accurately calculate the charging time for your battery using solar panels in this comprehensive guide. Learn about the different types of solar panels, key ...



Solar Reflectance, Transmittance, and Absorptance of ...

To calculate the efficiency of a solar collection system, one must know its original reflectivity but may not bring it back to the full value if surface abrasion has been ~used by the cleaning ...

Solar Cell Efficiency

Testing silicon solar cells. The efficiency is the most commonly used parameter to compare the performance of one solar cell to another. Efficiency is defined as the ratio of energy output from the solar cell to input energy from the sun.



How to Read a Solar Panel Technical Datasheet

Reading a solar panel technical datasheet is a fundamental skill for anyone in the solar energy industry or considering a solar panel installation. By understanding the specifications and performance data provided in these datasheets, you ...



How to Calculate Solar Panel KWp (KWh Vs. KWp)

However, do keep in mind that the Wp value is purely theoretical and represents the output under optimal solar radiation conditions. Hence, it is essential to consider the specific conditions under which your ...



How to Calculate the Surface Area Required by Solar ...

3. Imagine a solar panel has a conversion efficiency of 100% i.e. it converts all the solar energy into electrical energy then all you would need is a 1 m² solar panel to produce 1000 Watts of electrical energy :).

How To Calculate Solar Panel Output?

The average solar panel in the United States produces around 300 watts of power per hour, or 0.3 kWh (kilowatt-hours). However, this number can vary greatly depending on the above factors. Calculating kWh produced ...





From efficiency to eternity: A holistic review of photovoltaic panel

The rear junction box links the solar panel to other panels, an inverter, and other components. The junction box has a bypass diode; thus, moisture or dust could cause a ...

Series, Parallel & Series-Parallel Connection of PV Panels

Step 4: Calculating the total power of the PV array
The total power of the PV array is the summation of the maximum power of the individual modules connected in series. If P_M is the ...



 LFP 12V 200Ah

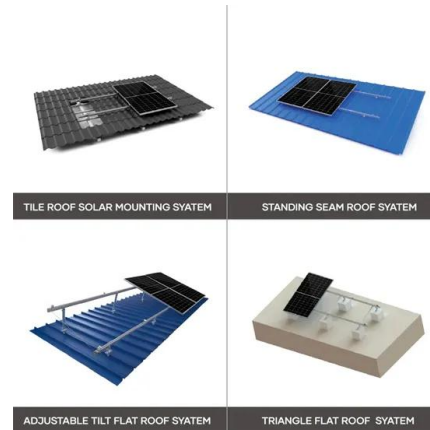


The impact of aging of solar cells on the performance of photovoltaic

The constant need to improve the lifetime of PV panels and their levels of economic reliability has triggered more concerns about the deformities that appear over their ...

STC, PTC, NOCT: What do they mean and how to use them?

STC is used by solar panel manufacturers to test and rate their panels. The value that interests us is the maximum power (P_{max}) or rated power (P_r), which is the nominal power of a solar ...



59 Solar PV Power Calculations With Examples Provided

Determines the capacity of the PV system needed to meet a specific energy demand. $S = D / (365 * H * r)$ S = size of PV system (kW), D = total energy demand (kWh), H = average daily solar radiation (kWh/m²/day), r = PV panel ...

Solar Panel Ratings Explained

Solar panel Current Ratings: Solar panels come with two Current (or Amperage) ratings that are measured in Amps: The Maximum Power Current, or Imp for short.; And the Short Circuit Current, or Isc for short.. The ...



Calculating Solar PV String Size - A Step-By-Step Guide

The voltage of a solar panel is not fixed. As the temperature of a panel increases, its voltage decreases, and as its temperature decreases, its voltage increases. The rate at which the ...

Contact Us

For catalog requests, pricing, or partnerships, please visit:
<https://www.ssab-proiect.eu>