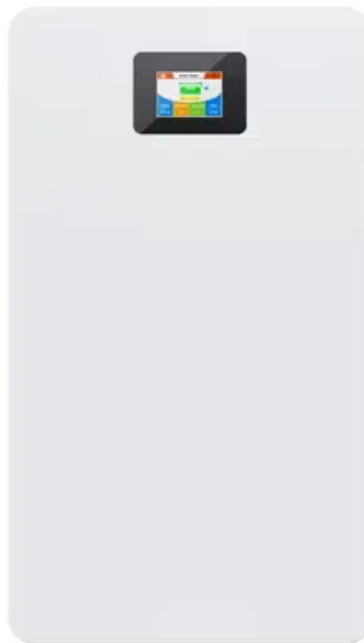


European Solar and Energy Storage Solutions

How to connect multiple photovoltaic inverters



Overview

Steps to Connect Multiple Solar Inverters
Step 1: Prepare the Installation Site
Ensure that the installation site is fully prepared to accommodate multiple inverters. Step 2: Install the Solar Inverters
Mount the solar inverters carefully following the manufacturer's instructions. Step 3: Connect the Inverters . Step 4: Test the System . Step 5: Safety Checks and Final Inspection .

Steps to Connect Multiple Solar Inverters
Step 1: Prepare the Installation Site
Ensure that the installation site is fully prepared to accommodate multiple inverters. Step 2: Install the Solar Inverters
Mount the solar inverters carefully following the manufacturer's instructions. Step 3: Connect the Inverters . Step 4: Test the System . Step 5: Safety Checks and Final Inspection .

Installation involves splitting the solar panel outputs properly, using combiner boxes if you need them, securely connecting these to the inverters, and making sure all systems are properly synced . How to connect multiple solar inverters together?

To connect multiple solar inverters together, you need to ensure the inverters are compatible, follow precise steps for parallel or series connections, and verify all safety and electrical requirements. Properly connected inverters can enhance your solar power system's capacity and efficiency.

Can you connect two hybrid solar inverters in parallel?

Connecting two hybrid solar inverters in parallel is a more complex task than connecting standard solar inverters in parallel because hybrid inverters are designed to manage both solar power and battery storage. This configuration is typically used in larger residential or commercial setups where more power is needed.

What is a parallel connecting solar inverter?

Parallel connecting solar inverters enhances efficiency and power output in a solar system. By combining the outputs of multiple inverters, you can expand your system's capacity and optimize energy generation. Proper installation

and configuration steps are crucial for an effective parallel connection.

How do I connect the inverters to the solar panels?

Connect the inverters to the solar panels separately to ensure optimal power generation. Use the LCD settings on the inverters to configure the AC output mode and PV judge condition based on your desired operation and energy source priority.

Should I use two solar inverters?

When using two inverters, ensure that both are from the same manufacturer and identical in model. This ensures a synchronised operation, enhancing the effectiveness of your solar energy system. Parallel connections aren't the only route; it's also possible to connect inverters in series for a higher voltage system.

How many solar inverters can be connected in parallel?

In single-phase operation, up to six solar inverters can be connected in parallel. This parallel connection enables the inverters to work together and support a maximum output power of 24 KW/30 KVA. In three-phase operation, a maximum of four inverters can support one phase.

How to connect multiple photovoltaic inverters



How to Run 2 Inverters from One Solar Array?

To run two inverters from one solar array, you need to make sure the inverters and the solar panels' output are compatible, then either connect the inverters in parallel for more capacity and redundancy or configure them ...

Calculating Solar PV String Size - A Step-By-Step Guide

One aspect of designing a solar PV system that is often confusing, is calculating how many solar panels you can connect in series per string. String size is important, because if you connect ...



How to Wire Solar Panels in Series-Parallel Configuration?

The following solar panel and battery wiring diagram shows how to wire a four 12V Solar Panels in series-parallel connection to a 24V, 400Ah battery with an automatic inverter system. Note ...

Can I Connect 2 Inverters to the Same Solar Panel?

Safety Precautions When Using Multiple Inverters

Ensuring Compatibility. Before connecting multiple inverters, ensure they are compatible with each other and with the solar panel system. Incompatible equipment can ...

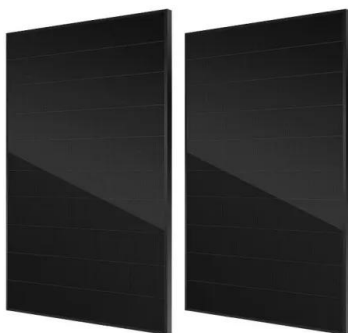


How to Connect Two Solar Inverters in Parallel: A ...

When managing a larger solar energy system, you may need to connect more than two inverters parallelly. See our definitive guide on how to connect two solar inverters in parallel for a secure and effective setup.

String Inverters: What You Need To Know

A string inverter system aggregates the power output of groups of solar panels in your system into "strings." Multiple strings of panels then connect to a single inverter where electricity is converted from DC to AC electricity. ...



How to Connect Multiple Solar Inverters Together?

To connect multiple solar inverters together, you need to ensure the inverters are compatible, follow precise steps for parallel or series connections, and verify all safety and electrical requirements.

Calculating Solar PV String Size - A Step-By-Step ...

One aspect of designing a solar PV system that is often confusing, is calculating how many solar panels you can connect in series per string. String size is important, because if you connect too many panels per string, you run the risk ...



A Guide to Solar Inverters: How They Work & How to Choose Them

Learn what a solar inverter is, how it works, how different types stack up, and how to choose which kind of inverter for your solar project. Optimized string inverters, sometimes called ...

How to Connect 2 Inverters in Parallel

Connecting two hybrid solar inverters in parallel can significantly improve the performance and reliability of your solar power system. By ensuring compatibility, following the step-by-step process, and adhering to ...



How to Wire Solar Panels to Inverter: Complete Guide

How to Connect Solar Panels to Home Inverter. The type of inverter used for solar panels depends on how it is connected to them. You can use string inverters, microinverters, and power optimizers. Once you have ...



Solar panel wiring basics: An intro to how to string solar panels

It is equivalent to voltage times current ($V \cdot I = P$) and is measured in Watts (W). In solar PV systems, an important function of the inverter--in addition to converting DC power ...



2MW / 5MWh
Customizable

Contact Us

For catalog requests, pricing, or partnerships, please visit:
<https://www.ssab-proiect.eu>