

## European Solar and Energy Storage Solutions

# How to change photovoltaic panel into controller board



## Overview

---

It uses an electronics switch ( MOSFET ) to connect and disconnect the solar panel with the battery. By switching the MOSFET at high frequency with various pulse widths, a constant voltage can be maintained. The PWM controller self-adjusts by varying the widths (lengths) and frequency of the pulses sent to the battery.

It uses an electronics switch ( MOSFET ) to connect and disconnect the solar panel with the battery. By switching the MOSFET at high frequency with various pulse widths, a constant voltage can be maintained. The PWM controller self-adjusts by varying the widths (lengths) and frequency of the pulses sent to the battery.

How to Build Your Own MPPT Controller. Building a DIY MPPT controller can be rewarding but requires caution due to high voltages involved. Here's a step-by-step overview: Define System Requirements: Determine the input voltage range from your solar panels, desired output current, and battery specifications.

Powering your electronics project using a solar panel can be fun, but how do you know if you're extracting and utilizing all the power a panel can provide?

I built a maximum power point tracking solar charge controller to make sure I could extract all the power available from my solar panel.

Following this step-by-step guide, you can confidently connect your solar panels to an MPPT charge controller, enhancing the performance and longevity of your solar energy setup. Embrace the benefits of efficient solar power generation and unlock the full potential of clean, renewable energy for your home or business.

In this guide I'll show you how to connect a solar panel to a charge controller in JUST 3 steps. To help you out, I've made a wiring diagram and step-by-step videos. Follow along and your charge controller will be wired and set up properly in no time.

## How to change photovoltaic panel into controller board

---

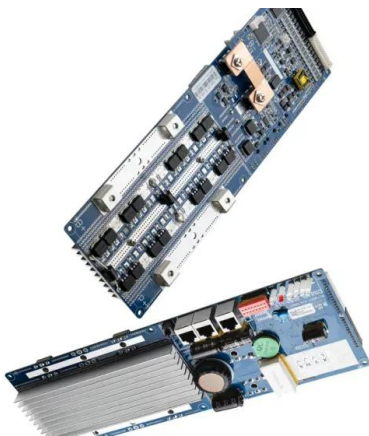


### How to select a solar charge controller for your PV ...

You divide the wattage amount of your solar panel by the voltage amount of your battery to get the precise amount of charge controller in ampere that is sufficient for your battery. E.g if you have a 12volts battery and ...

### A Step-by-Step Guide: How to Connect Solar Panels to an MPPT

How to Setup a Solar Charge Controller (menu, battery type & wiring) Let me show you how to connect a simple solar charge controller. ?? Please consider liking & subscribing ??



### ARDUINO SOLAR CHARGE CONTROLLER ( Version ...

Note: During this process, Solar panel should be disconnected or covered with a black cloth or cardboard. Dawn/Dusk: To simulate dawn and dusk using black cloth. Night: Cover the solar panel entirely. Day: Remove the ...

### How to Wire a Solar Charge Controller: Step-by-Step Installation ...

To wire a solar charge controller, firstly, connect the battery to the controller, ensuring the positive and negative terminals are correctly matched. Next, connect the solar ...



## A Guide to Solar Inverters: How They Work & How to Choose Them

The first part is the power optimizer, which handles DC to DC and optimizes or conditions the solar panel's power. There is one power optimizer per solar panel, and they keep the flow of ...

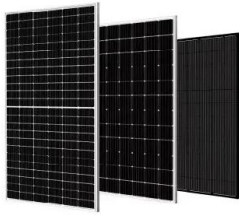
## How to Connect Solar Panels to the Grid: A Step-by ...

Solar Panel Installation. The installation phase is where the rubber meets the road - or to be more accurate - where the solar panel meets the rooftop. Solar panels should be installed at an angle that catches the ...



## Solar Charge Controller Sizing and How to Choose ...

Solar charge controllers play an integral role in solar power systems, making them safe and effective. You can't simply connect your solar panels to a battery directly and expect it to work. Solar panels output more ...



## Ultimate Guide to Solar PCB Boards: Design, Manufacturing, and ...

Solar PCB boards integrate solar cells and circuit boards to convert solar energy into electricity through the photovoltaic effect. The manufacturing process of solar PCB boards is similar to ...



## Connecting photovoltaic production to your electrical installation

An additional resource. To simplify the integration of a photovoltaic system and/or other distributed energy resources, consider Schneider Electric's Energy Control Center - an ...



## ARDUINO SOLAR CHARGE CONTROLLER ( Version 2.0)

Note: During this process, Solar panel should be disconnected or covered with a black cloth or cardboard. Dawn/Dusk: To simulate dawn and dusk using black cloth. Night: Cover the solar panel entirely. Day: Remove the ...



## Solar Panel Wiring Diagram: A Step-by-Step Guide

Solar Panel to Charge Controller: Connect your solar panel to your charge controller. This is where the power generation starts. Charge Controller to Battery: Connect your charge controller to your battery. The ...

## MPPT Solar Charge Controller Circuit Diagram

How to Build Your Own MPPT Controller. Building a DIY MPPT controller can be rewarding but requires caution due to high voltages involved. Here's a step-by-step overview: Define System Requirements: Determine the ...



- High energy density and long cycle life
- Modular structure

- No need to replace the battery
- Shorter charging time
- Meets #1 EV car



## How to Wire Solar Panels in Series-Parallel ...

The following solar panel and battery wiring diagram shows how to wire a four 12V Solar Panels in series-parallel connection to a 24V, 400Ah battery with an automatic inverter system. Note that the number of solar panels and batteries ...

## How to reduce solar panel VOC (Important!)

The Solar Panel Open Circuit Voltage (VOC) Solar Panel Maximum Power Point Voltage (Vmp) Solar Panel Temperature Coefficient of Pmpp; Solar Panel Temperature Coefficient of VOC. If your eyes are rolling ...



## How to Wire Solar Panels in Series-Parallel Configuration?

The following solar panel and battery wiring diagram shows how to wire a four 12V Solar Panels in series-parallel connection to a 24V, 400Ah battery with an automatic inverter system. Note ...

## Connect Panels to a Battery Bank, Charge Controller

This article from ShopSolar provides a guide on how to connect solar panels to a battery bank, charge controller, and inverter in a DIY solar panel system. It emphasizes the importance of proper preparation, using ...



## Contact Us

---

For catalog requests, pricing, or partnerships, please visit:  
<https://www.ssab-proiect.eu>