

European Solar and Energy Storage Solutions

How to calculate the weight of photovoltaic panels



Overview

When installing a solar panel system, you must understand certain features of your roof and the solar panels you're installing. Solar panels differ in weight and length depending on the manufacturer, brand, and amount of energy output your home requires. Determining whether your rooftop can support the solar.

Calculating your solar panel roof load, whether on your own or with the help of experts, is critical to ensure your solar system investment is successful and doesn't damage your roof. In addition, you want to ensure that you.

Before diving into how to calculate your solar panel roof load, let's first understand the two key calculations involved: point load and distributed load.

1. A uniformly distributed load is when weight is evenly distributed over an entire.

This solar panel roof load calculator will help you understand whether your roof can safely support solar panels. Based on your roof's material as well.

The average weight for a residential solar panel is around 40 pounds. They are approximately 5.4 feet long and 3.25 feet wide, which works out to about 2.3 pounds of weight per square foot.

The average weight for a residential solar panel is around 40 pounds. They are approximately 5.4 feet long and 3.25 feet wide, which works out to about 2.3 pounds of weight per square foot.

A solar panel roof load calculator can help you determine the size and weight of solar panels your roof can accommodate. This article explains some of the core factors determining whether a roof can support a solar system and provide a formula to determine your roof load.

Solar panel weight varies by manufacturer, but standard 60 cell solar panels weigh about 40 pounds. Commercial solar panels weigh around 50 pounds.

Estimates the time it takes for a PV system to pay for itself through energy savings. $PP = IC / (E * P)$ PP = Payback period (years), IC = Initial cost of the system (USD), E = Energy price (USD/kWh), P = Annual power output of the

system (kWh/year) Fuse/Circuit Breaker Sizing.

Most solar panels are a little over 5 feet by 3 feet and weigh 40-45 pounds, but size varies by manufacturer. In this guide, we'll unpack solar panel size in greater detail, helping you determine how large of a system your property can accommodate before you purchase your panels.

How to calculate the weight of photovoltaic panels



How much do solar panels weigh?

Can my roof support a solar panel installation? When you are installing rooftop solar you must make sure your roof is in good condition and can take the weight of the installation. Solar panel weight on your roof. If you were installing a 6 ...

Solar Rooftop Calculator: How Many Solar Panels Can Fit On

...

Size of solar panels (or, better yet, watts per square foot of solar panels). Figuring out the standard sizes of solar panels is a tough job as we have pointed out in our article about typical

...



The Ultimate Guide To Solar Panel Calculation

Solar panel calculation involves understanding the size, type, and other crucial factors related to solar power panels. In this Jackery guide, we will reveal how you can calculate load wattage, efficiency, insolation, backup time, ...



59 Solar PV Power Calculations With Examples Provided

Estimates the time it takes for a PV system to

pay for itself through energy savings. $PP = IC / (E * P)$
 * P) PP = Payback period (years), IC = Initial cost of the system (USD), E = Energy price (USD/kWh), P = Annual power output of the ...



How Much Do Solar Panels Weigh? 1.30 - 2,608.7 lbs ...

If we know that 1 square foot of a solar panel weight 2.25 lbs and has a rated wattage of 17.25 watts, we can calculate the how much any solar panel (100W, 200W, 300W, 400W, 500W) and any solar system (3kW, 5kW, 10kW, 20kW, ...

How to Size a Solar System [Step-by-Step Guide]

If your solar panel's performance warranty guarantees 80% performance after 25 years, then their degradation rate is calculated as 20%/25 years, or 0.8% production loss each year. By the end of its lifecycle, a 400W-rated panel ...

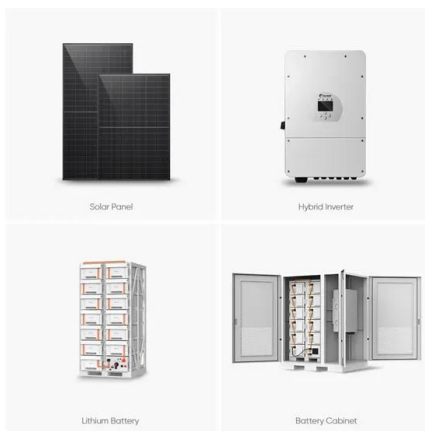


Solar Panel kWh Calculator: kWh Production Per Day, Month, Year

The first factor in calculating solar panel output is the power rating. There are mainly 3 different classes of solar panels: Small solar panels: 50W and 100W panels. Standard solar panels: ...

How Much Do Solar Panels Weigh? 1.30

For roof installation, the solar panel weight per square foot is extremely useful. Now, here's the deal: If we know that 1 square foot of a solar panel weight 2.25 lbs and has a rated wattage of 17.25 watts, we can calculate the how much ...



Solar Panel Sizes & Dimensions UK (2024)

Many solar panel companies make small solar panels designed specifically for small roofs. You can also opt for high-efficiency solar panels that have conversion rates as high as 23% (compared to the industry average of ...

Complete guide to solar panel size

Most roofs can withstand solar panel weight. But, if you have an old roof, consider replacing it before installing solar. It may also be a good idea to hire a professional for an inspection if you have an older home. Solar news Solar ...



How much do solar panels weigh?

When it comes to the exact weight of solar panels you will find that it varies between different solar panel manufacturers and models, and whether you are using polycrystalline, monocrystalline, or thin-film solar panels. The average ...



Contact Us

For catalog requests, pricing, or partnerships, please visit:
<https://www.ssab-proiect.eu>