

European Solar and Energy Storage Solutions

How much is the power generation loss of photovoltaic panels



Overview

Estimates the energy production and cost of energy of grid-connected photovoltaic (PV) energy systems throughout the world. It allows homeowners, small building owners, installers and manufacturers to easily develop estimates of the performance of potential PV installations.

Estimates the energy production and cost of energy of grid-connected photovoltaic (PV) energy systems throughout the world. It allows homeowners, small building owners, installers and manufacturers to easily develop estimates of the performance of potential PV installations.

Solar panels range from around 18% to 25% efficiency, with steady gains in efficiencies in recent years. As with wind, the inefficiency of a solar panel doesn't mean the Sun has to emit more energy to power the panel. But more efficient solar panels generate more electricity from each panel, which saves materials and land area.

Estimates the energy production and cost of energy of grid-connected photovoltaic (PV) energy systems throughout the world. It allows homeowners, small building owners, installers and manufacturers to easily develop estimates of the performance of potential PV installations.

The performance of a PV module decreases by surface soiling, and the PV power loss increases with an increase in the quantity of soil on the PV module. Thus, the accumulation of soil on the PV module can lead to a significant decrease in energy produced by the PV module.

Aurora Solar, a leading solar design and performance software provider, released a guide for understanding the leading causes of energy loss in PV systems, and how to avoid them. What is a PV energy estimate?

Estimates the energy production and cost of energy of grid-connected photovoltaic (PV) energy systems throughout the world. It allows homeowners, small building owners, installers and manufacturers to easily develop estimates of the performance of potential PV installations.

How does power loss affect the performance of a photovoltaic system?

The performance of a photovoltaic (PV) system is highly affected by different types of power losses which are incurred by electrical equipment or altering weather conditions. In this context, an accurate analysis of power losses for a PV system is of significant importance.

What is a grid-connected photovoltaic (PV) energy estimate?

Estimates the energy production of grid-connected photovoltaic (PV) energy systems throughout the world. It allows homeowners, small building owners, installers and manufacturers to easily develop estimates of the performance of potential PV installations. Operated by the Alliance for Sustainable Energy, LLC.

What is power loss in PV system?

Such a protective component can cause one form of connection loss known as power loss in the system. The other type connection loss in PV system happens where PV modules and other electrical components are connected together to form PV arrays, known as resistive loss .

How much solar energy is lost in a solar module?

Finally, the model is verified for both PV cells and modules. The results indicate that, for a PV module, about 57.25% of the total incident solar energy is lost in the carriers' generation, while the remaining 1.28%, 23.47% and 2.10% are lost in the carriers' transportation, recombination and cell to module process, respectively.

Do total power losses affect PV system performance?

Performance metrics such as performance ratio and efficiency have been widely used in the literature to present the effects of the total power losses in PV systems.

How much is the power generation loss of photovoltaic panels



How To Calculate Solar Panel Output?

How many kWh are produced by a solar panel? The amount of electricity produced by a solar panel depends on several factors, including its size, efficiency, location, and weather conditions. The average solar panel in ...

Solar Panel Angle Calculator: The Definitive Guide

Annual energy output vs panel tilt angle, for a South-facing 5 kW array in Phoenix, Arizona. Tilting the panels significantly increases energy output (read our article to find out solar panels power generation rate). The ...



Shading losses in PV systems, and techniques to ...

Solar photovoltaic (PV) systems generate electricity via the photovoltaic effect -- whenever sunlight knocks electrons loose in the silicon materials that make up solar PV cells. As such, whenever a solar cell or panel does not receive ...



Energy loss is single-biggest component of today's ...

Solar panels range from around 18% to 25%

efficiency, with steady gains in efficiencies in recent years. As with wind, the inefficiency of a solar panel doesn't mean the Sun has to emit more energy to power the ...



59 Solar PV Power Calculations With Examples Provided

P = Total power requirement (kW) E = Solar panel rated power (kW) r = Solar panel efficiency (%) For example, if your home requires a 5 kW system, and you're using 300 W panels with an efficiency of 15%: $N = 5 / (0.3 * 0.15) = \dots$

End-of-life management: Solar Photovoltaic Panels

This report, prepared jointly by the International Renewable Energy Agency (IRENA) and the International Energy Agency Photovoltaic Power Systems Programme (IEA-PVPS), is the first-ever projection of PV panel ...

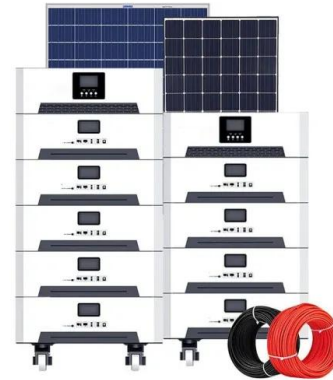


The Impact of Dust on Solar Panel Efficiency

It takes around 5 minutes to clean a 1 m × 1 m solar panel with an electricity consumption of roughly 0.9 Wh. [11,12] If we assume that the power generated by the panel averages 300 W/m² over 7 hours, then the fraction of the energy ...

What Are the Effects of Temperature on Solar Panel Efficiency?

Solar panel efficiency has a direct correlation with temperature. Learn how heat and cold impact electricity production & how to mitigate negative effects. As the temperature ...



Contact Us

For catalog requests, pricing, or partnerships, please visit:
<https://www.ssab-proiect.eu>