

European Solar and Energy Storage Solutions

How much does a 2 4-meter photovoltaic panel weigh



Overview

The wattages of solar panels can range greatly. While some solar panels power select appliances or RVs, others are powerhouses, and others can power industrial buildings. These solar panels differ in both size and weight. On average, a solar panel can provide 15 watts per square foot. Let's start by breaking down the.

Here are some quick facts about the average weight of solar panels with differing wattages: 1. 100-watt solar panels from 5 of the most.

The roofs of current homes can safely support about 20 pounds per square foot. Including the mounting equipment, residential solar panels weigh about 3 to 4 pounds per square foot.

Each panel weighs around 42 pounds (19 kg), though this may vary from brand to brand, but is usually about the same for most solar panels used in home installations.

Each panel weighs around 42 pounds (19 kg), though this may vary from brand to brand, but is usually about the same for most solar panels used in home installations.

The average weight for a residential solar panel is around 40 pounds. They are approximately 5.4 feet long and 3.25 feet wide, which works out to about 2.3 pounds of weight per square foot.

You can expect a photovoltaic solar panel to weigh anywhere between 33 to 50 pounds. It is also vital to understand what the weight of the solar panels comes out to be per foot.

On average, solar panels weigh about 42 pounds, with some falling between 40 and 60 pounds. How much does a solar panel weigh?

Solar panels usually weigh about 40 to 50 pounds. Commercial solar panels are generally larger than residential solar panels at 6.5 feet by 3 feet. Installing high-efficiency solar panels can reduce the number of panels you need, which lightens the total load on your roof. How big is a solar panel?

How big are solar panels?

Residential solar panels consist of around 60 solar cells and are roughly 5.5 feet long and 3 feet wide. Solar panels usually weigh about 40 to 50 pounds. Commercial solar panels are generally larger than residential solar panels at 6.5 feet by 3 feet.

How much does A 72-cell solar panel weigh?

72-cell solar panels weigh around 61.73 pounds. As you may recall, these larger panels usually provide 350 to 400 watts. The weight of a solar panel per unit is an important consideration when deciding which size is best for your home, which we will discuss further in a later section.

How much does a 60 cell solar panel weigh?

Every brand of solar panels has slight variations in their dimensions and weights, according to manufacturing material. Although the weight of different brands of solar panels varies, an average 60 cell solar panel weighs about 40 pounds. Other important factors are wattage and voltage/current requirements.

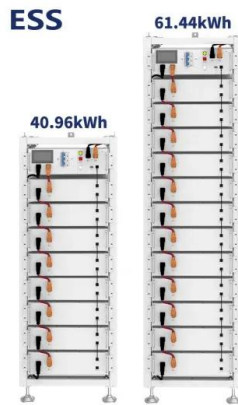
How much does an RV solar panel weigh?

RV solar panels are generally rated at 100-150 watts and are smaller and lighter than residential solar panels. In general, the average rigid solar panel used in RV solar systems is rated at 100 Watts and weighs about 15lbs.

How many PV cells are in a solar panel?

Solar photovoltaic (PV) cells (6-inch by 6-inch squares) are solar panels' crucial building blocks . A residential solar panel usually has 60 or 72 PV cells, while a commercial panel generally has 72 or 96. That number is important because it plays into solar panels' weight — unsurprisingly, the more solar PV cells, the greater the weight.

How much does a 2 4-meter photovoltaic panel weigh



How Much Does a Solar Panel Weigh?

A 72-cell, 300-watt solar panel will therefore weigh more than a 60-cell, 250-watt solar panel. So, the solar panel installation on your rooftop would have to support the extra weight. A 72-cell, 300-watt solar panel has a ...

How much do solar panels weigh?

The average weight for a residential solar panel is around 40 pounds. They are approximately 5.4 feet long and 3.25 feet wide, which works out to about 2.3 pounds of weight per square foot. Each module typically contains 60 solar cells.



How Many kWh Does A Solar Panel Produce Per Day? Calculator ...

Now you can just read the solar panel daily kWh production off this chart. Here are some examples of individual solar panels: A 300-watt solar panel will produce anywhere from 0.90 to ...

Solar Panel Size & Weight Guide [+ Charts] - Solartap

Most solar panels are a little over 5 feet by 3 feet

and weigh 40-45 pounds, but size varies by manufacturer. In this guide, we'll unpack solar panel size in greater detail, helping you determine how large of a system your ...



Solar Panel kWh Calculator: kWh Production Per Day, Month, Year

How many kWh does this solar panel produce in a day, a month, and a year? Just slide the 1st slider to '300', and the 2nd slider to '5.50', and we get the result: In a 5.50 peak sun hour area, ...

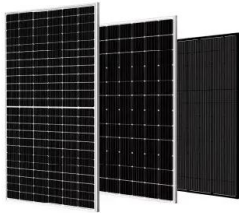
Is Your Roof Strong Enough for Solar Panels? , Paradise Energy

At roughly 5.5 feet by 3.25 feet, a solar panel weighs around 2.3 pounds per square foot. 72-cell panels will weigh a few more pounds, but because the weight is spread out over a larger ...



How Big is a Solar Panel? A Guide to Solar Panel Dimensions

6 ???· The average size of a single solar panel cell measures 6 inches long and 6 inches wide.
iii) How Much Does a Standard Solar Panel Weigh. Standard 60-cell solar panels weigh ...



How much do solar panels weigh? A complete guide to ...

In general, a 60 cell residential solar panel weighs between 35lbs and 50 lbs (16-22 kg) and can produce between 300 and 400 watts of power. However, a 36 cell flexible (thin-film) solar panel which can produce ...



 **LFP 48V 100Ah**

How much do solar panels weigh?

The average weight for a residential solar panel is around 40 pounds. They are approximately 5.4 feet long and 3.25 feet wide, which works out to about 2.3 pounds of weight per square foot. Each module typically contains 60 solar ...

Solar Panel Size Guide: How Big Are Solar Panels and ...

How much does a solar panel system weigh? This is an important factor to consider, especially if you have a residential home with an older roof. At 17.5 square feet per solar panel you will be looking at around ...





How Much Do Solar Panels Weigh? 1.30 - 2,608.7 lbs ...

If we know that 1 square foot of a solar panel weight 2.25 lbs and has a rated wattage of 17.25 watts, we can calculate the how much any solar panel (100W, 200W, 300W, 400W, 500W) and any solar system (3kW, 5kW, 10kW, 20kW, ...

Standard Solar Panel Sizes And Wattages (100W-500W Dimensions)

As we can see, those 60-cell, 72-cell, and 96-cell solar panel dimensions are a bit theoretical. These are the practical solar panel dimensions by wattage from solar panels that are actually ...



Contact Us

For catalog requests, pricing, or partnerships, please visit:
<https://www.ssab-proiect.eu>