

European Solar and Energy Storage Solutions

How much current should photovoltaic panels use



Overview

A photovoltaic (PV) cell, commonly called a solar cell, is a nonmechanical device that converts sunlight directly into electricity. Some PV cells can convert artificial light into electricity. Sunlight is composed of photons, or particles of solar energy. These photons contain varying amounts of energy that correspond to the.

The movement of electrons, which all carry a negative charge, toward the front surface of the PV cell creates an imbalance of electrical.

The efficiency that PV cells convert sunlight to electricity varies by the type of semiconductor material and PV cell technology. The efficiency of commercially available PV panels averaged less than 10% in the mid-1980s.

The PV cell is the basic building block of a PV system. Individual cells can vary from 0.5 inches to about 4.0 inches across. However, one PV cell can.

When the sun is shining, PV systems can generate electricity to directly power devices such as water pumps or supply electric power grids. PV systems can also charge a battery to provide.

Calculated amps for power small equipment the typical solar panel is 14 to 24 amps. The calculated amps from watts and voltage are 10 to 12 amps per hour for a 200-watt solar panel.

Calculated amps for power small equipment the typical solar panel is 14 to 24 amps. The calculated amps from watts and voltage are 10 to 12 amps per hour for a 200-watt solar panel.

For its analyses, NREL uses an average system size of 7.15 kilowatts direct-current with a 3-11 kilowatt range. How much current does a solar panel produce?

This means that when this solar panel is producing 100 Watts of power under Standard Test Conditions, it will be generating 5.62 Amps of current. On the other hand, the Short Circuit Current rating (Isc) on a solar panel, as the name suggests, indicates the amount of current produced by the solar panel when it's short-circuited.

What is the voltage of a solar panel?

The voltage of a solar panel is the result of individual solar cell voltage, the number of those cells, and how the cells are connected within the panel. Every cell and panel has two voltage ratings. The Voc is the amount of voltage the device can produce with no load at 25° C.

How many solar panels are needed to power a house?

On average, 15-20 solar panels of 400 W are needed to power a house. This can vary depending on your solar panels' wattage rating, solar panels' efficiency, and the climate in your area. How do I calculate my electricity consumption?

.

How much electricity does a solar panel use a year?

According to the U.S. Energy Information Administration (EIA), the average American household uses about 10,500 kWh of electricity per year. Solar panel wattage: A panel's wattage is the amount of electricity the solar panel produces under standard test conditions.

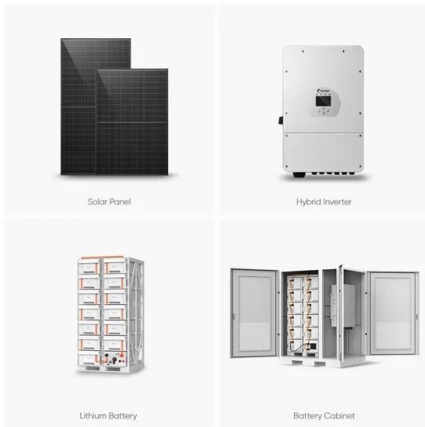
What is watts vs volts in a solar panel?

Amps vs watts vs volts in a solar panel together produce, store, and transmit electricity. The potential difference in the solar system is determined by volts. The solar panel-generated electricity is determined by amps. Watts also known as the power of solar panels is the overall output calculation of watts one by current and voltage product.

How much power does a 100 watt solar panel produce?

This means that, under ideal conditions, the 100W solar panel could generate between 97 and 103 Watts of power. However, since the power output is directly linked to Solar Irradiance (W/m^2), which changes with the time of day, weather, and location, the actual power output of a 100-watt solar panel can fluctuate from 0 to 100 watts.

How much current should photovoltaic panels use



An Essential Guide to Measuring and Monitoring Solar Power for

For a multimeter with a 10A DC current limit, the largest solar panel you should test is one with a power rating of up to 150W. This is based on a typical panel voltage of 18V, ...

How to Test Solar Panels: Output, Amps & Watts

Step 2: Measure the Solar Panel's Current. Open the jaws of the clamp meter, place one of the solar panel's wires inside, and close the jaws. The solar panel's current reading will show on the display. Remember this ...



Homeowner's Guide to Going Solar , Department of Energy

Also, your solar energy system will undergo a thorough inspection from a certified electrician as part of the installation process. A working PV panel has a strong encapsulant that prevents ...

All You Need to Know about Amps, Watts, and Volts in ...

Calculated amps for power small equipment the

typical solar panel is 14 to 24 amps. The calculated amps from watts and voltage are 10 to 12 amps per hour for a 200-watt solar panel. The assumed sunlight per day for ...



A Guide to Solar Inverters: How They Work & How to Choose Them

A solar power inverter converts or inverts the direct current (DC) energy produced by a solar panel into Alternate Current (AC.) Most homes use AC rather than DC energy. DC energy is ...

What Voltage My Solar Panel Produces (Calculations)

To calculate the power (watts) provided by a solar panel we need to know the size of the electrical wave (volts) and the force of the current (amps) behind the wave. Most solar panels list two current values: Maximum ...



Solar panel output: How much electricity do they ...

To calculate how much power a solar system will generate, multiply the solar panel wattage by the number of daylight hours, and then multiply that by the number of solar panels you have. For example, with 350W ...

Contact Us

For catalog requests, pricing, or partnerships, please visit:
<https://www.ssab-proiect.eu>