

## European Solar and Energy Storage Solutions

**How many watts of current  
does 11 photovoltaic panels  
have**



## Overview

---

A 400 W solar panel can produce around 1.2-3 kWh or 1,200-3,000 Wh of direct current (DC). The power produced by solar panels can vary depending on the size and number of your solar panels, the efficiency of solar panels, and the climate in your area.

A 400 W solar panel can produce around 1.2-3 kWh or 1,200-3,000 Wh of direct current (DC). The power produced by solar panels can vary depending on the size and number of your solar panels, the efficiency of solar panels, and the climate in your area.

Use our solar panel calculator to find your solar power needs and what panel size would meet them.

**Solar panel Wattage Rating:** The Wattage rating of a solar panel is the most fundamental rating, representing the maximum power output of the solar panel under ideal conditions. You'll often see it referred to as "Rated Power", "Maximum Power", or "Pmax", and it's measured in watts or kilowatts peak (kWp).

Learn about the typical solar panel wattages used in rooftop installations and how to estimate the ideal system capacity for your home.

Solar Panel Calculator is an online tool used in electrical engineering to estimate the total power output, solar system output voltage and current when the number of solar panel units connected in series or parallel, panel efficiency, total area and total width. These estimations can be derived from the input values of number of solar panels . How many Watts Does a solar panel output?

The solar panel output rating of the average residential panel is between 250 and 485 watts, but commercial modules can have a higher solar panel rating. For example, Trina Solar's ts n-type i-TOPCon solar module for applications in large-scale PV projects can have an output of up to 740 watts.

What is solar panel wattage?

Solar panel wattage is the total amount of power the solar panel can produce in a given amount of time. It is usually measured in watts and calculated by multiplying the solar panel's voltage, amperage, and the number of cells. The typical solar panel power rating varies between 40 and 480 watts.

How much power does a 100 watt solar panel produce?

This means that, under ideal conditions, the 100W solar panel could generate between 97 and 103 Watts of power. However, since the power output is directly linked to Solar Irradiance ( $W/m^2$ ), which changes with the time of day, weather, and location, the actual power output of a 100-watt solar panel can fluctuate from 0 to 100 watts.

How much current does a solar panel produce?

This means that when this solar panel is producing 100 Watts of power under Standard Test Conditions, it will be generating 5.62 Amps of current. On the other hand, the Short Circuit Current rating (Isc) on a solar panel, as the name suggests, indicates the amount of current produced by the solar panel when it's short-circuited.

How to calculate solar panel output?

To find the solar panel output, use the following solar power formula:  $\text{output} = \text{solar panel kilowatts} \times \text{environmental factor} \times \text{solar hours per day}$ . The output will be given in kWh, and, in practice, it will depend on how sunny it is since the number of solar hours per day is just an average. How to calculate the solar panels needs for camping?

.

How much power does a 400 watt solar panel produce?

A 400 W solar panel can produce around 1.2-3 kWh or 1,200-3,000 Wh of direct current (DC). The power produced by solar panels can vary depending on the size and number of your solar panels, the efficiency of solar panels, and the climate in your area. How many solar panels are needed to run a house?

## How many watts of current does 11 photovoltaic panels have



## How Many kWh Does A Solar Panel Produce Per Day? Calculator ...

Now you can just read the solar panel daily kWh production off this chart. Here are some examples of individual solar panels: A 300-watt solar panel will produce anywhere from 0.90 to ...

## Solar Panel Output Calculator - Dot Watts®

Use this solar panel output calculator to find out the total output, production, or power generation from your solar panels per day, month, or in year. Also, I'm gonna share some tips to get the maximum power output from your ...



## Standard Solar Panel Sizes And Wattages (100W-500W Dimensions)

How many watts per square foot can a solar panel generate? Dividing the specified wattage by the square footage of the solar panel will give us just this result: The average solar panel ...

## How Many Solar Panels Do I Need to Power My ...

For the calculations below, we use 400 watts as

an average solar panel rating of the power solar panels produce. Production ratio: The ratio between the estimated energy production of the system over time (kWh) and ...

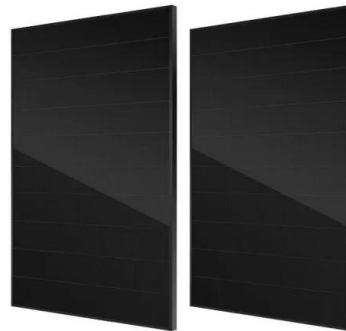


## Solar Panel kWh Calculator: kWh Production Per Day, ...

Here you can simply input what size solar panel you have (100W, 200W, 300W, and so on) and how many peak sun hours you get (average is about 5 hours). You get an estimate of how many kWh per day such a solar panel will generate:

## Standard Solar Panel Sizes And Wattages (100W ...

How many watts per square foot can a solar panel generate? Dividing the specified wattage by the square footage of the solar panel will give us just this result: The average solar panel output per area is 17.25 watts per square foot. ...

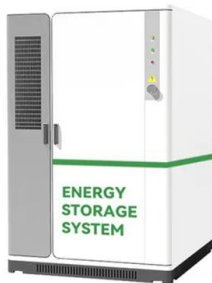


## Calculating Solar PV String Size - A Step-By-Step Guide

The rate at which the open circuit voltage of a solar panel will change as its temperature changes is defined by the Temperature Coefficient of Voc. You can always find this value on the solar ...

## Solar Panel Sizes And Wattage , Sizing, Dimensions

Watt (W) and kilowatt (kW): a unit used to quantify the rate of energy transfer. One kilowatt = 1000 watts. Solar panels' rating in watts specifies the maximum power the solar panel can deliver at any time, providing insights ...



## Solar Power Basics for Beginners: Volts, Amps, Watts, Watt ...

But because a solar panel doesn't always hit max current and max voltage, you shouldn't expect peak power output in real life. That means that a 100W solar panel doesn't always produce ...

## Solar Panel Output and Wattage Explained (2024 ...

Wattage varies by manufacturer and product, and most residential solar panels range between 250 and 400 watts of power. Production ratios: The production ratio of a solar panel system refers to its estimated ...



## Solar Panel Series & Parallel Calculator

There should be a label on the back of your solar panel that lists its key technical specs. 2. Enter the panel's max power voltage (denoted  $V_{mp}$  or  $V_{mpp}$ ). It may also be called the optimum operating voltage. 3. Enter the ...



## What Voltage My Solar Panel Produces (Calculations ...

Panel Current: Watt - Volts - Amps - lpm. To calculate the power (watts) provided by a solar panel we need to know the size of the electrical wave (volts) and the force of the current (amps) behind the wave. Most solar ...



## Contact Us

---

For catalog requests, pricing, or partnerships, please visit:  
<https://www.ssab-proiect.eu>