

European Solar and Energy Storage Solutions

How many watts is the brightest photovoltaic panel light

Test certification
CE  FC 



Overview

Higher lighting requirements of highways and parking lots start around 25 Watts / 2600 Lumens and go up to 70 Watts / 6500 Lumens. Note: The lower the wattage, the less the LED fixture has to work to produce the light. i.e. lower wattage can, at times, equal higher lumen per watt output.

Higher lighting requirements of highways and parking lots start around 25 Watts / 2600 Lumens and go up to 70 Watts / 6500 Lumens. Note: The lower the wattage, the less the LED fixture has to work to produce the light. i.e. lower wattage can, at times, equal higher lumen per watt output.

Lumens represent the total amount of light emitted by a bulb, regardless of the type or wattage, while watts measure the power consumed by the bulb. Comparing the number of lumens is essential when transitioning from incandescent to LED bulbs, as the same level of brightness can be achieved with lower wattages.

Typically, the wattage range for solar panel lights is between 10 to 50 watts. Factors influencing this range include the type and purpose of the light, as well as advancements in solar technology. While lower wattage lights are generally sufficient for pathway or accent lighting, more robust options, like solar floodlights, can operate at .

Here are some comparisons of types of solar lights bulbs: 40 watt incandescent = 10 watt CFL or 3 watt LED; 60 watt incandescent = 14 watt CFL or 6 watt LED; 100 watt incandescent = 28 watt CFL or 13 watt LED; You can buy a blazingly bright 3,000 lumen LED security flood light or pool lights that range from 1,000 to 20,000 lumens.

The brightest solar spotlight typically emits between 1,000 and 2,000 lumens, corresponding roughly to 10 to 30 watts of power consumption, depending on the efficiency of the solar panel and LED technology used. How many Watts does a single solar panel produce?

A solar panel produces 250 watts per hour. An LED bulb uses 12 watts a day. Therefore, one solar panel is enough to power an LED bulb for over 20 days.

An average home with LED bulbs uses up to 450 watts per day, so having at least two solar panels will keep the lights on.

How bright is a solar light?

The brightness of a solar light depends on the battery charge, and the latter generally depends on how much direct sunlight the solar panel has received during the day. How much of your area will be illuminated also depends on the solar panel's quality and the lighting source itself.

How many lumens does a LED light need?

Higher lighting requirements of highways and parking lots start around 25 Watts / 2600 Lumens and go up to 70 Watts / 6500 Lumens. Note: The lower the wattage, the less the LED fixture has to work to produce the light. i.e. lower wattage can, at times, equal higher lumen per watt output.

What is a PV panel for a solar lighting system?

A PV panel for a solar lighting system differs from the traditional large solar panel, since it comprises four solar cells. PV panel consist of solar cells connected in series to produce a higher voltage. A single solar cell converts sunlight into electricity by generating current, which is called "photovoltaic effect".

What is a 50 lumen solar light?

50 lumens are perfect for walkways, fences, driveways, backyards, gardens, lanes, and other relatively small locations. For these spots, solar lights are intended to add mood, color, and dimension rather than lighting up the area.

How many Watts Does a solar light need?

Working with the solar lighting specialist can help determine the requirements needed for light output. For example, signs can be illuminated with a range from a 3.4 Watt FLAB mini flood for small signs to up to 25 Watt ARF flood fixtures for large signs and billboard applications. The same thing can be said for overhead lights.

How many watts is the brightest photovoltaic panel light

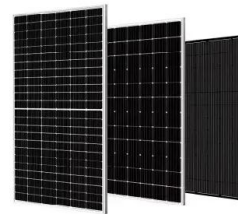


How Many Lumens Do You Need for Outdoor Lighting?

Many have even switched to solar powered LED outdoor lights saving hundreds of dollars per year on their electricity bill while enjoying bright, highly durable and beautifully designed lights. ...

150 Watt Solar Panels: Everything You Need to Know

A 150-watt solar panel, for instance, will generate more power on a bright day than on an overcast day. The panel's efficiency also depends on its angle and orientation. Despite these distinctions, a solar panel with 150 ...



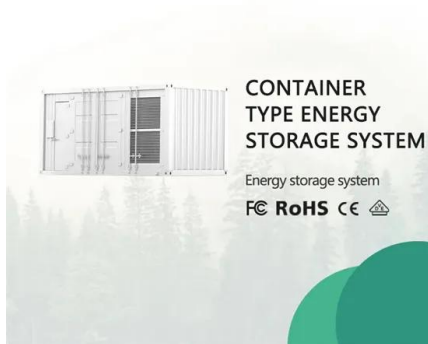
What level of light intensity (lumens) do you need across a solar panel

What level of light intensity (lumens) do you need across a solar panel in order to obtain an incident-light to energy-output efficiency of 15%? Skip to main content. has ...

How Many Solar Panels Do I Need to Power My ...

For the calculations below, we use 400 watts as

an average solar panel rating of the power solar panels produce. Production ratio: The ratio between the estimated energy production of the system over time (kWh) and ...



How Much Power Do Solar Panels Produce Per Square Meter?

As a result, if your solar panel is 1 square meter in size, it will likely only produce 150-200W in bright sunlight. For 1000 kWh per month, how many solar panels do I need? (light) provides ...

Best Outdoor Solar Lights: 2024 Buyers Guide

6 Best Outdoor Solar Lights. The below table provides a quick summary of our recommendations for the best outdoor solar lights across six unique categories. We chose these products based on criteria including ...



How Much Power (Watts) does a Solar Panel ...

6 hours x 300 watts (an example wattage of a premium solar panel) = 1,800 watts-hours, or roughly 1.8 kilowatt-hours (KW-h). Therefore, the total output for each solar panel in your array will generate about 600-650 kWh of energy a ...



The Ultimate Guide to Solar Lights and Solar ...

The brightness of a solar light depends on the battery charge, and the latter generally depends on how much direct sunlight the solar panel has received during the day. How much of your area will be illuminated also ...



Solar Lighting Design Guide - Wattage / Lumen ...

Higher lighting requirements of highways and parking lots start around 25 Watts / 2600 Lumens and go up to 70 Watts / 6500 Lumens. Note: The lower the wattage, the less the LED fixture has to work to produce the light...i.e. lower ...

What level of light intensity (lumens) do you need ...

A source radiating a power of one watt of light in the color for which the eye is most efficient (a wavelength of 555 nm, in the green region of the optical spectrum) has luminous flux of 683 lumens. So a lumen represents at ...



Wattage vs Lumens: Better Understanding Lamp ...

Lumens represent the total amount of light emitted by a bulb, regardless of the type or wattage, while watts measure the power consumed by the bulb. Comparing the number of lumens is essential when transitioning ...



Standard Solar Panel Sizes And Wattages (100W ...

A typical 400-watt solar panel is 79.1 inches long and 39.1 inches wide. It takes up 21.53 sq ft of area. If you have a 1000 sq ft roof, and you can use 75% of that roof area for solar panels, you can theoretically put 34 400-watt solar panels ...



Contact Us

For catalog requests, pricing, or partnerships, please visit:
<https://www.ssab-proiect.eu>