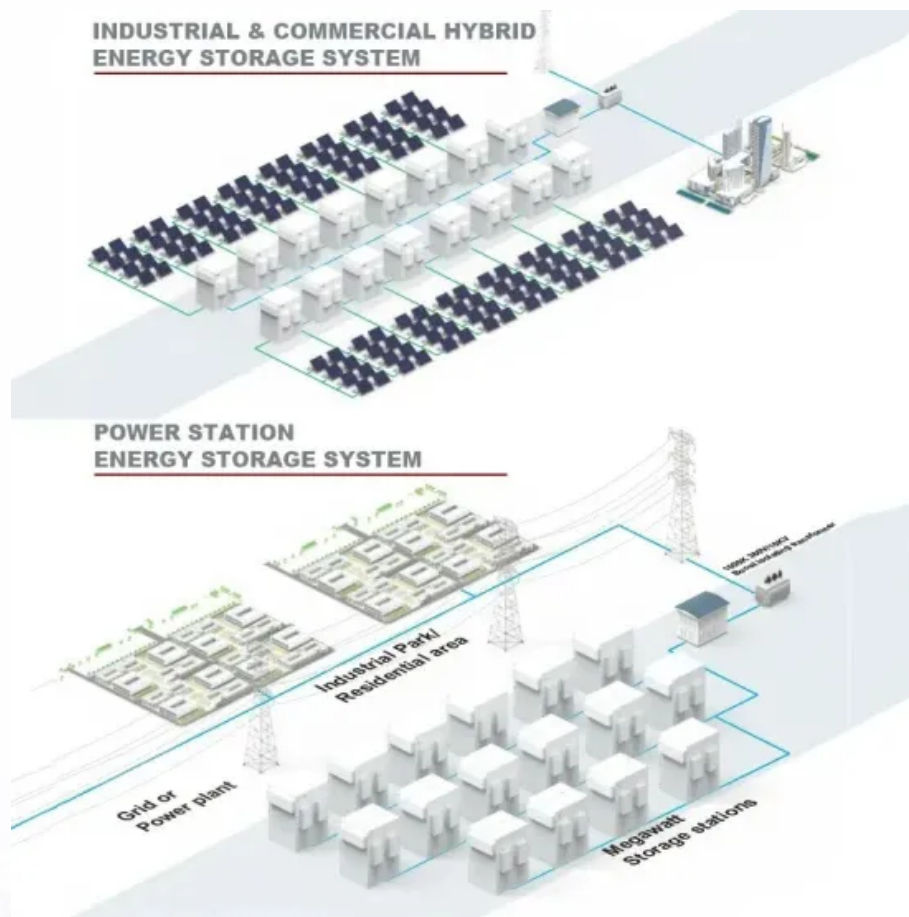


European Solar and Energy Storage Solutions

How many tons of brackets are needed for 1mw photovoltaic



Overview

Estimates the energy production and cost of energy of grid-connected photovoltaic (PV) energy systems throughout the world. It allows homeowners, small building owners, installers and manufacturers to easily develop estimates of the performance of potential PV installations.

Estimates the energy production and cost of energy of grid-connected photovoltaic (PV) energy systems throughout the world. It allows homeowners, small building owners, installers and manufacturers to easily develop estimates of the performance of potential PV installations.

Assuming an average power output of 200 W per panel and accounting for a 15% efficiency loss, we can calculate the number of panels needed for 1 MW. $1 \text{ MW} = 1,000,000 \text{ W}$. Considering an efficiency loss of 15%, the total power required would be: $\text{Total Power Required} = 1,000,000 \text{ W} / (1 - 0.15) \approx 1,176,470.59 \text{ W}$.

Quick Facts. In operation since May 2011. Converts solar radiation to electric power. 3,456 individual PV modules. Rated maximum DC power 967,680W @ 1000 W/m² irradiance, 25 o C ambient. Divided into 8 octants, each rated 120,960W. Selectable 600/1000V DC operation.

Our results indicate. 5.5 acres/MWac for fixed-tilt PV and 6.3 acres/MWac for 1-axis tracking PV (capacity-weighted average direct land-use requirements for systems under 20 MW; see Table 4 in Section 4.2). Horner and Clark (2013) report 3.8 acres/GWh/yr for PV and 2.5 acres/GWh/yr for CSP.

1. PV Solar Panels: – Look for the wattage rating of the PV solar panels. Let’s assume each panel has a rating of 300 watts. – Determine the total power output needed. 1MW is equivalent to 1000 kilowatts (kW) or 1,000,000 watts (W). – Calculate the number of panels required by dividing the total power output needed by the wattage of . How many solar panels are needed for 1 mw?

Here You Will Learn How Many Solar Panels Are Needed For 1 MW. Accordingly, to set up solar panels of 1 megawatt, you need over 6000 square

meters of land.

How many panels are needed for 1 mw?

Assuming an average power output of 200 W per panel and accounting for a 15% efficiency loss, we can calculate the number of panels needed for 1 MW.
 $1 \text{ MW} = 1,000,000 \text{ W}$.

How much space does a 1 MW solar power plant need?

One Megawatt is equal to 1000 kilowatts. A 1 kW solar system needs a space of 100 sq feet for installation. Hence, a 1 MW solar power plant will require $(100 \times 1000) = 1,00,000$ square feet of area for installation. Preferably, a 1 MW solar power plant is a ground-mounted system since most rooftops don't have that much space for installation.

How many square meters does a 1MW Solar System need?

On average, a 1kW solar system requires a shade-free area of 6 square meters. Accordingly, to set up solar panels of 1 megawatt, you need over 6000 square meters of land. The number of solar panels required and the mounting structure also affect the total 1MW solar power plant area required for installation.

How much power is needed per MW?

$1 \text{ MW} = 1,000,000 \text{ W}$ Considering an efficiency loss of 15%, the total power required would be: Total Power Required = $1,000,000 \text{ W} / (1 - 0.15) \approx 1,176,470.59 \text{ W}$
Number of Panels = Total Power Required / Average Power Output per Panel
Number of Panels = $1,176,470.59 \text{ W} / 200 \text{ W} \approx 5,882.35$.

What should I consider when installing a 1 MW solar power system?

Compliance with local regulations and obtaining necessary permits are crucial when installing a 1 MW solar power system. Additionally, financial considerations, such as upfront costs, available incentives, potential savings, and return on investment, should be evaluated to assess the feasibility and economic viability of the project.

How many tons of brackets are needed for 1mw photovoltaic



Annual direct CO2 emissions avoided per 1 GW of ...

Mt CO2 = million tonnes of carbon dioxide. Efficient gas refers to combined-cycle gas turbines. Applied capacity factors are current global fleet averages for nuclear power, hydro and efficient gas, and global averages for new projects ...

Land-Use Requirements for Solar Power Plants in the United ...

Our results indicate. 5.5 acres/MWac for fixed-tilt PV and 6.3 acres/MWac for 1-axis tracking PV (capacity-weighted average direct land-use requirements for systems under 20 MW; see Table ...



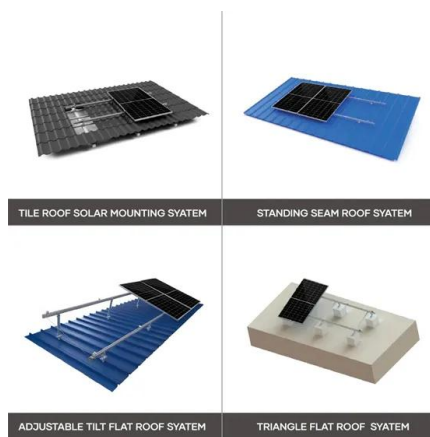
How much land will PV need to supply our electricity?

This PV FAQ fact sheet answers the question "How much land will PV need to supply our electricity?" The answer is that PV could supply our electricity with little visible impact on our ...



1 MW Solar Power Plant Cost: Installation Insights

These panels, also known as photovoltaic (PV) modules, contain multiple solar cells that absorb sunlight and convert it into direct current (DC) electricity. 2. Mounting Structures: Solar panels need to be mounted on ...



Modeling and simulation of 1mw grid connected photovoltaic system in

After taking into consideration the small amount of CO2 emission during the PV system operation, the saving value of CO2 emission result by installed a 1MW PV plant in first year is 1208 tons. ...

Modeling and simulation of 1mw grid connected ...

After taking into consideration the small amount of CO2 emission during the PV system operation, the saving value of CO2 emission result by installed a 1MW PV plant in first year is 1208 tons. Figure 9-b shows the amount of CO2 emission ...



Annual direct CO2 emissions avoided per 1 GW of installed ...

Mt CO2 = million tonnes of carbon dioxide. Efficient gas refers to combined-cycle gas turbines. Applied capacity factors are current global fleet averages for nuclear power, hydro and ...



Modeling and simulation of 1mw grid connected photovoltaic system in

value of CO₂ emission result by installed a 1MW PV plant in first year is 1208 tons. Figure 9-b shows the amount of CO₂ emission reduction for twenty-five years of life ...



Contact Us

For catalog requests, pricing, or partnerships, please visit:
<https://www.ssab-proiect.eu>