

## European Solar and Energy Storage Solutions

# How long is the maximum length of a wind turbine blade



## Overview

---

Forty years ago, wind turbine blades were only 26 feet long and made of fiberglass and resin . Today, blades can be 351 feet, longer than the height of the Statue of Liberty, and produce 15,000 kW of power. Modern blades are made from carbon-fiber and can withstand more stress due to higher strength properties. They.

Longer blades create more efficient turbines; however, they also put more mechanical stress on the structure, so it requires lighter materials.

The limit to the maximum size of a wind turbine blade involves the point of inflection, when the blades begin to bend and flex. Longer blades.

Today, blades can be 351 feet, longer than the height of the Statue of Liberty, and produce 15,000 kW of power.

Today, blades can be 351 feet, longer than the height of the Statue of Liberty, and produce 15,000 kW of power.

From modest beginnings with blades a mere 26 feet long, today's wind turbines showcase blades surpassing 350 feet—the breadth of a football field.

Wind turbine blades range from under 1 meter to 107 meters (under 3 to 351 feet) long.

The largest turbine is GE's Haliade-X offshore wind turbine, with blades 351 feet long (107 meters) - about the same length as a football field.

According to The United States Department of Energy, most modern land-based wind turbines have blades of over 170 feet (52 meters).How many blades does a wind turbine have?

Most turbines have three blades which are made mostly of fiberglass. Turbine blades vary in size, but a typical modern land-based wind turbine has blades of over 170 feet (52 meters). The largest turbine is GE's Haliade-X offshore wind turbine, with blades 351 feet long (107 meters) - about the same length as a football field.

How long is a wind turbine rotor?

Wind turbine blade length or wind turbine blades size usually ranges from 18 to 107 meters (59 to 351 feet) long. Depending upon the use of the electricity produced. A large, utility-scale turbine may have blades over 165 feet (50 meters) long, thus the diameter of the rotor is over 325 feet (100 meters).

Why do turbines have longer blades?

Turbines with longer blades cover a larger area, allowing them to collect more wind and generate more power. The relationship between blade size and energy is exponential, meaning that doubling the blade length increases the power capacity by a factor of four.

What is the average rotor diameter of a wind turbine?

In 2023, the average rotor diameter of newly-installed wind turbines was over 133.8 meters (~438 feet)—longer than a football field, or about as tall as the Great Pyramid of Giza. Larger rotor diameters allow wind turbines to sweep more area, capture more wind, and produce more electricity.

What is a typical wind turbine size?

For homeowners curious about wind technology, understanding typical wind turbine sizes can be helpful. According to The United States Department of Energy, most modern land-based wind turbines have blades of over 170 feet (52 meters). This means that their total rotor diameter is longer than a football field.

Why is wind turbine blade size important?

Wind turbine blade size plays a big role in the amount of energy a turbine can produce. Simply put, larger blades equal more power, which is why there's been a consistent trend toward bigger turbines in the wind energy industry.

## How long is the maximum length of a wind turbine blade

---



### Wind Turbine Technology: A Deep Dive into Blade Designs and ...

The length of a wind turbine blade is a critical factor in determining its energy-producing capacity. Longer blades have a larger sweep area, enabling them to capture more wind energy. ...

### How a Wind Turbine Works

Turbine blades vary in size, but a typical modern land-based wind turbine has blades of over 170 feet (52 meters). The largest turbine is GE's Haliade-X offshore wind turbine, with blades 351 feet long (107 meters) - about the ...



### Wind turbine

A wind turbine is a device that converts the kinetic energy of Offshore wind turbines are built up to 8 MW today and have a blade length up to 80 meters (260 ft). Designs with 10 to If the height of a rooftop mounted turbine tower is ...

### Wind Turbine Blade Size: How Big Are They and Why?

Wind turbine blade size plays a big role in the

amount of energy a turbine can produce. Simply put, larger blades equal more power, which is why there's been a consistent trend toward bigger turbines in the wind energy industry. Its ...



### How Long are Wind Turbine Blades? (Answer Might ...

Wind turbine blades range from under 1 meter to 107 meters (under 3 to 351 feet) long. For example, the world's largest turbine, GE's Haliade-X offshore wind turbine, has blades up to (107 meters (351 feet) long! On the ...

### How Long Are Wind Turbine Blades?

We can conclude that rotor blades found on wind turbines can reach up to 107 meters in length. Turbines of this size are usually found in offshore wind farms with onshore turbines usually producing less energy. ...



### Wind Turbine Blades; What You Really Need To Know

Wind turbine blade length or wind turbine blades size usually ranges from 18 to 107 meters (59 to 351 feet) long. Depending upon the use of the electricity produced. A large, utility-scale turbine ...

## How to calculate chord lengths along the wind turbine blade

Chord length, or the width of the wind turbine blade at a given distance along the length of the blade, is an important factor in blade design because increasing the chord will increase the ...

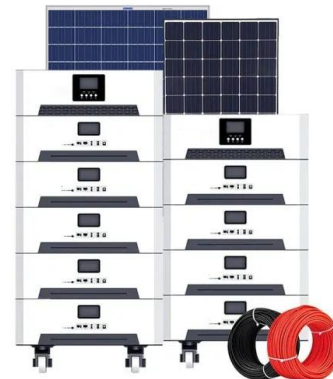


## Wind Turbine Technology: A Deep Dive into Blade ...

The length of a wind turbine blade is a critical factor in determining its energy-producing capacity. Longer blades have a larger sweep area, enabling them to capture more wind energy. However, longer blades also exert higher structural ...

## How Fast Do Wind Turbines Spin? (20 RPM, on average)

Wind turbines' RPM (Rotations Per Minute) speed is the number of complete rotations the blade makes in one minute. The average wind turbine spins at a rate of 15-25 RPM. That's pretty impressive, considering the blades ...



## Wind Turbines: the Bigger, the Better , Department of ...

In 2023, the average rotor diameter of newly-installed wind turbines was over 133.8 meters (~438 feet)--longer than a football field, or about as tall as the Great Pyramid of Giza. Larger rotor diameters allow wind ...



## How Long are Wind Turbine Blades: The Quick Guide ...

Blade Specifications: Length: 354 feet, rivalling the wingspan of a Boeing 747; Generation Capacity: Capable of lighting up thousands of European homes; Material Advancements: Utilizing cutting-edge materials like ...



## Transporting Wind Turbine Blades: How To Do It ...

For comparison, the blade length of the turbines heading for the Scottish wind farm is 108 meters, or a whopping 355 feet long! It looks as if heavy-haul companies providing wind turbine blade transport will have their ...



## Contact Us

---

For catalog requests, pricing, or partnerships, please visit:  
<https://www.ssab-proiect.eu>