

European Solar and Energy Storage Solutions

How high is the wind for wind power generation



How high is the wind for wind power generation

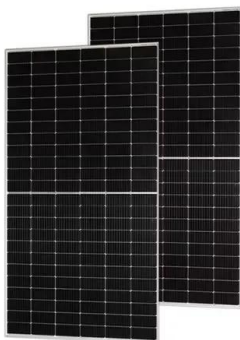


Wind Energy Basics , NREL

But some turbine designs can produce more clean energy than others. For example, because winds can be more powerful and less volatile higher in the atmosphere, placing turbines on towers 100 feet (or 30 meters) tall--about the ...

Wind power , Description, Renewable Energy, Uses, ...

4 ???· A wind power class of 3 or above (equivalent to a wind power density of 150-200 watts per square meter, or a mean wind of 5.1-5.6 meters per second [11.4-12.5 miles per hour]) is suitable for utility-scale wind power generation, ...



How Do Wind Turbines Work?

Wind turbines work on a simple principle: instead of using electricity to make wind--like a fan--wind turbines use wind to make electricity. Wind turns the propeller-like blades of a turbine around a rotor, which spins a generator, ...

Wind turbine , Renewable Energy, Efficiency & Design ...

wind turbine, apparatus used to convert the

kinetic energy of wind into electricity.. Wind turbines come in several sizes, with small-scale models used for providing electricity to rural homes or cabins and community ...



A database of hourly wind speed and modeled generation for US wind ...

Wind plant characteristics. We attempted to find wind speeds and generation estimates for all utility-scale (>1 MW) wind plants in the contiguous United States that were ...

Contact Us

For catalog requests, pricing, or partnerships, please visit:
<https://www.ssab-proiect.eu>