

European Solar and Energy Storage Solutions

How big are Midea s photovoltaic panels



Overview

Flexible application. Battery ready, meet multi-scenarios: PV installation only , battery added and battery extension capability. Easy to maintenance. Free online monitoring, All information about PV system is available anytime and anywhere. PV Panels. Monitoring platform. Meter Grid Energy Manager. TV.

Flexible application. Battery ready, meet multi-scenarios: PV installation only , battery added and battery extension capability. Easy to maintenance. Free online monitoring, All information about PV system is available anytime and anywhere. PV Panels. Monitoring platform. Meter Grid Energy Manager. TV.

Midea MHELIOS Home Energy Storage System M1-T5/6/8/10K H1-(5-40)-E0 Battery Pack Power Module Energy Manager Flexible application Intelligent Management Safety and reliable Higher production More energy using DC coupled solution architecture that stores PV power directly to the battery without AC conversion losses Integrated features (back-up .

The Midea Energy Storage Unit (MESU) product can store excess solar energy to power your house 24 hours without worrying about power outages. Quick Installation Easy plug and play installation, touch free commissioning with smartphone.

Midea Solar Energy has meticulously engineered its products to achieve high efficiency ratings, which is pivotal in maximizing energy output from available sunlight. Their solar panels boast cutting-edge photovoltaic technology that converts more sunlight into usable energy than many competitors on the market.

The size and weight of solar panels vary depending on the make and model, with most residential panels measuring about 5.5 feet by 3 feet and weighing between 40 and 50 pounds. The total system size is also influenced by the output and efficiency of the panels—a system using 50-pound 450-watt panels might actually be more compact than one . What is a Midea energy storage unit (Mesu)?

The Midea Energy Storage Unit (MESU) product can store excess solar energy

to power your house 24 hours without worrying about power outages. Parallel design avoids the barrel effect of short board batteries and improves usable capacity. Electrical isolation and BMS protection functions ensure battery safety.

What are the dimensions of a solar panel?

Also, check out Most Powerful Highest Watt Solar Panels. Depending on manufacturer and type, these dimensions are usually available in millimetres which can be easily converted to centimetres or meters. For example, a standard PV cell's dimensions in length and breadth are 156 mm respectively $= 156/0.1 = 15.6$ cm.

What is the difference between a 60-cell and 72-cell solar panel?

You'll typically find that 60-cell solar panels have output ratings between 350 and 400 watts and efficiency ratings between 17% and 19%. 72-cell panels, on the other hand, are usually arranged in a 6-cell by 12-cell grid.

What kind of material is a solar panel made of?

The kind of material that the solar panel is made of affects its size and shape. Solar panels come in three different types of material: monocrystalline, polycrystalline and thin-film. For example, monocrystalline is the most expensive and the most efficient option. It takes up less space and is lighter than thin-film material.

How big are Midea s photovoltaic panels

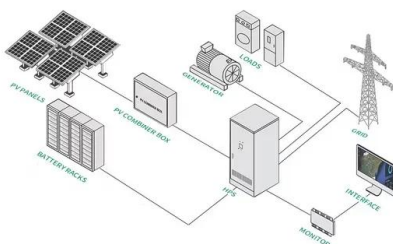


Solar Panel kWh Calculator: kWh Production Per Day, Month, Year

Big solar panel system: 1kW, 4kW, 5kW, 10kW system. These include several solar panels connected together in a system (2 - 50 solar panels). Now, we need to understand what these ...

How many solar panels do you need to power a UK ...

To answer this, we need to look at how much energy solar panels can generate. Most home panels can each produce between 250 and 400 Watts per hour. According to the Renewable Energy Hub, domestic solar ...



How Big Are Solar Panels? Here's Their Typical Size and ...

The ideal size for a solar panel system will be individual to you and your home. While the average system is about 20 to 25 panels, you need to understand what your energy needs are, what your ...

What Size Solar Battery Do I Need? , Solar

It's worth noting that a Lawrence Berkeley

National Laboratory study found that 10 kWh of battery storage paired with a small solar system can meet critical backup needs for three days in most climate zones and times of ...



Calculating the Kilowatt Hours Your Solar Panels Produce (Solar Panel ...

Number of panels = DC rating / Panel Rating (e.g. 250 W) *note this is important b/c panels are rated in watts, and the systems are rated in kilowatts (1000 watts). So a 7.53 ...



How Big is a Solar Panel? The Solar Panel Size Guide

A single photovoltaic cell is 6 inches by 6 inches. A solar panel is comprised of these photovoltaic cells arranged in configurations of 32, 36, 48, 60, 70, and 96 cells. How many cells are in a ...



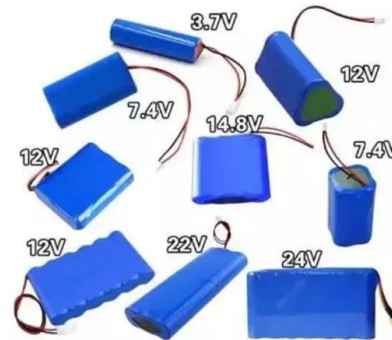
How Big are Solar Panels?

How big are solar panels? Which size is right for you? We answer these questions, and more, in extensive detail. 888.650.4750. Schedule Now. Instant Quote. Solutions. Solar; Storage; It is best to consult with a professional ...



Complete guide to solar panel size

An average solar panel system requires between 15 to 19 solar panels and takes up 260 to 340 square feet of space. Solar panel efficiency, output, a good warranty, and a trusted brand are more important than focusing on solar panel ...



How Big is a Solar Panel? A Guide to Solar Panel Dimensions

6 ???· Image Credits: energyfollower . The 60-cell and 72-cell solar panels are commonly used for residential and commercial purposes. The 96-cell solar, measuring 17.5 square feet, ...

Solar Panel Size & Weight Guide [+ Charts] - Solartap

How Big Is a Solar Panel? While it varies based on manufacturer, most residential solar panels are about 66 inches by 40 inches, or a little over 5 feet by 3 feet. This comes out to about 18 square feet. Commercial solar ...



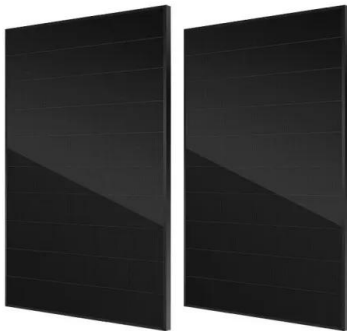
How Big Is A Solar Panel? A Guide To The Different

The area of a 60 cell solar panel is generally about 18 ft² (1.68m²). The average length, width, and thickness of a 72 cell solar panel are 79 inches (2m), 40 inches (1m), and 1.5 inches (38mm) respectively. On ...



Solar Panel Size and Weight: How Big Are Solar Panels?

The size and weight of solar panels vary depending on the make and model, with most residential panels measuring about 5.5 feet by 3 feet and weighing between 40 and 50 pounds. The total system size is also influenced ...



Complete guide to solar panel size

This is a valid concern - solar panels are pretty big! Most home solar panels are about 5.5 feet x 3 feet and weigh roughly 40 pounds each. Most of the time, you won't see the size of solar panels expressed in feet. Instead, you'll see it's ...

Contact Us

For catalog requests, pricing, or partnerships, please visit:
<https://www.ssab-proiect.eu>