

European Solar and Energy Storage Solutions

Heard and McDonald Islands energy vision



Overview

The United Kingdom formally established its claim to Heard Island in 1910, marked by the raising of the Union Flag and the erection of a beacon by Captain Evensen, master of the Mangoro. Effective government, administration and control of Heard Island and the McDonald Islands was transferred to the Australian government on 26 December 1947 at the commencement of the first

What is the Heard Island & McDonald Islands Marine Reserve?

One of the world's largest highly protected IUCN category 1A marine reserves the Heard Island and McDonald Islands Marine Reserve was established by Australia in the waters surrounding HIMI in 2002.

Where are Heard Island and McDonald Islands located?

The islands are a territory (Territory of Heard Island and McDonald Islands) of Australia administered from Hobart by the Australian Antarctic Division of the Australian Department of Climate Change, Energy, the Environment and Water.

What is the difference between Heard Island and McDonald Island?

Heard Island - 80% ice-covered, bleak and mountainous, dominated by a large massif (Big Ben) and an active volcano (Mawson Peak); McDonald Islands - small and rocky fish Mawson Peak, an active volcano, is on Heard Island.

How big is Heard Island & McDonald Islands?

The group's overall land area is 372 km² (144 sq mi) and it has 101.9 km (63 mi) of coastline. Discovered in the mid-19th century, the islands lie on the Kerguelen Plateau in the Indian Ocean and have been an Australian territory since 1947. Heard Island and McDonald Islands contain Australia's only two active volcanoes.

Does Heard Island have a harbour?

Heard Island and the McDonald Islands have no ports or harbours; ships must

anchor offshore. The coastline is 101.9 km (63.3 mi) in extent, and a 12 nmi (22 km) territorial sea and 200 nmi (370 km) exclusive fishing zone are claimed. [2].

How big is Heard Island?

Heard Island, by far the largest of the group, is a 368-square-kilometre (142 sq mi) mountainous island covered by 41 glaciers [22] (the island is 80% covered with ice [2]) and dominated by the Big Ben massif.

Heard and McDonald Islands energy vision



Heard and McDonald Islands McDonald Islands

species. Active speciation is clearly present. The beetle populations on Heard Island and McDonald Islands group show unique evolutionary adaptations to the environment, and several other invertebrate groups provide opportunities to study evolutionary processes in undisturbed populations at the southern limits of their distribution.

Heard and McDonald Islands

Located in the Southern Ocean, this Australian external territory comprises mainly two volcanic islands, Heard Island and the McDonald Islands, featuring stark volcanic landscapes, glaciers, and the highest mountain in Australian territory, Mawson Peak. Significance.



Proposal to expand Heard Island and McDonald Islands ...

The Proposal to expand Heard Island and McDonald Islands Marine Reserve - Public consultation paper ('proclamation proposal') has been prepared to support public consultation on the proposed design of an expanded Heard Island and McDonald Islands (HIMI) Marine Reserve.

Heard Island and McDonald

Island Marine Park poised to

"Quadrupling the size of the Heard and McDonald Islands marine park would protect more of our oceans around the island and seals, albatross and whales, that call these oceans home. "This proposal would mean protecting additional oceans the size of Italy and bring half of Australian oceans under protection, while allowing the sustainable



Proposal to expand Heard Island and McDonald Islands ...

Terrestrial habitat connectivity for foraging, breeding and migratory seabirds and marine mammals - Heard Island and McDonald Islands are home to numerous nesting seabirds and breeding marine mammals, including two endemic species, which rely on the surrounding waters to forage.

Heard Island and McDonald Islands

Overview Administration and economy History Geography Wildlife See also Further reading External links

The United Kingdom formally established its claim to Heard Island in 1910, marked by the raising of the Union Flag and the erection of a beacon by Captain Evensen, master of the Mangoro. Effective government, administration and control of Heard Island and the McDonald Islands was transferred to the Australian government on 26 December 1947 at the commencement of the first



Heard? v ostrov a McDonaldovy ostrovy



HEARD ISLAND AND MCDONALD ISLANDS, AUSTRALIA [online]. Program OSN pro životní prostředí [cit. 2017-01-08]. Dostupné online. (anglicky) [nedostupný zdroj] World Heritage Places - Heard and McDonald Islands [online]. Australian Government - Department of the Environment and Energy [cit. 2017-01-08]. Dostupné online. (anglicky)

Heard Island and McDonald Islands

The islands are a territory (Territory of Heard Island and McDonald Islands) of Australia administered from Hobart by the Australian Antarctic Division of the Australian Department of Climate Change, Energy, the Environment and Water.



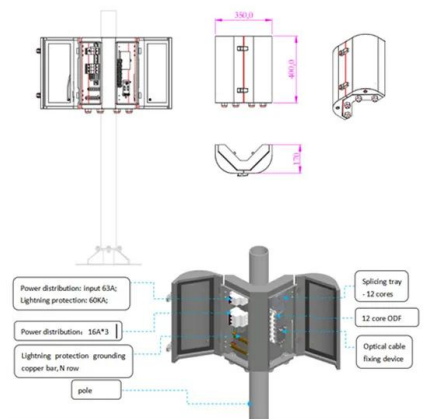
Heard Island and McDonald Islands

Heard Island and McDonald Islands in the Southern Ocean A map of Heard Island and McDonald Islands. Heard Island, by far the largest of the group, is a 368-square-kilometre (142 sq mi) mountainous island covered by 41 glaciers [21] (the island is 80% covered with ice [1]) and dominated by the Big Ben massif has a maximum elevation of 2,745 metres (9,006 ft) at ...

Heard Island and McDonald Islands

Commonwealth of Australia since 1953. The Heard Island and McDonald Islands Act 1953 provides the legislative basis for the Territory's administration. Administration of the Territory is

the responsibility of the Australian Government department that administers the Heard Island and McDonald Islands Act 1953. This responsibility has



Everything you need to know about Australia's Heard and McDonald Islands

Big Ben has erupted several times over the past two decades. McDonald Island lies 43.5 kilometres due west of Heard Island, and is the major island in the McDonald Islands group. It is a mere 186 metres high and it too has an active volcano. The McDonald Islands are so volcanically active they have doubled in area since 1980.

Heard Island and McDonald Islands - Travel guide at Wikivoyage

Heard Island and McDonald Islands are uninhabited, barren, Subantarctic islands in the Southern Ocean, far due south of India and roughly 400 km southeast of Kerguelen of the French Southern and Antarctic Lands. The islands are administered by Australia and listed as a UNESCO World Heritage site. Although it's administered by Australia, the islands are approximately 4,000 ...



Heard Island and McDonald Islands Marine Reserve -

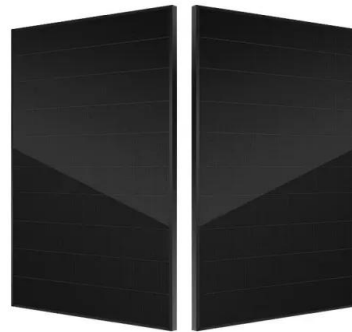
Wikipedia

Lagekarte der Inseln des Seegebiets. Das Heard Island and McDonald Islands Marine Reserve ist ein 71.200 km² großes Meeresschutzgebiet im am weitesten von Australien entfernten Außengebiet. Es liegt im Indischen Ozean, 1.700 km nördlich der australischen Mawson-Station in der Antarktis und etwa 4.100 km südwestlich von Western Australia und ist etwa ebenso weit ...



Heard and McDonald Islands, Australia , SpringerLink

Heard Island is 43 km long and 21 km wide. McDonald Islands are a group of uninhabited rocky islets, 40 km west of Heard Island (Encyclopaedia Britannica 2006). Heard Island has approximately 362.5 km² of area and the McDonald Island, 2.6 km². The site includes the adjacent offshore rocks and shoals and all territorial waters to a distance of 12 nautical ...



Conservation values in the marine environment surrounding ...

Heard Island and McDonald Islands (HIMI) are an external Territory of Australia, located approximately 4000 kilometres southwest of Australia in the southern Indian Ocean. One of the worlds largest highly protected IUCN category 1A marine reserves the Heard Island and

Heard and McDonald Islands McDonald Islands

Heard and McDonald Islands Heard and McDonald Islands This is one of the wildest and

remotest places on earth. Heard Island is dominated by Big Ben, Australia's highest mountain and an active volcano, under a deep mantle of snow and glaciers. On the horizon, the volcanic McDonald Islands rise precipitously out of the world's stormiest waters.



Proposal to expand Heard Island and McDonald Islands ...

Public consultation paper 1 Purpose of this document The Proposal to expand Heard Island and McDonald Islands Marine Reserve - Public consultation paper ('proclamation proposal') has been prepared to support public consultation on the proposed design of an expanded Heard Island and McDonald Islands (HIMI) Marine Reserve.

Contact Us

For catalog requests, pricing, or partnerships, please visit:
<https://www.ssab-proiect.eu>