

## European Solar and Energy Storage Solutions

# Georgia single phase solar



## Overview

---

Does Georgia Power offer solar?

From home installation and our buy back program, to non-installation options, our goal is to make solar an option for every Georgia Power customer. Learn more about our behind-the-meter solar programs, including the new Renewable and Nonrenewable Resources (RNR) program, and how to interconnect your system.

Does Georgia Power Company offer a solar extension program?

The Public Service Commission Order pertaining to Dockets 4822, 16573, and 19279 states that Georgia Power Company is to provide existing solar participants the option to extend the term of their current Distributed or Utility Scale generation for up to 35 years. Please select from the following options for more information surrounding your program.

How much power do you get from a solar panel system?

The amount of power you get from a solar panel system depends on: Contact your utility to see what arrangements it makes with homeowners who produce solar power. Your utility may use “net metering,” which pays you or gives you credit for excess power your system produces during the day and returns to the grid.

How much can I match with my solar energy bill?

For an additional 1.25¢ per kWh on your bill, you can match either 50% or 100% of your monthly energy usage through these credits. Learn more about our Simply Solar Program!.

How do I choose the best solar program?

Get real life figures to help you determine the best solar program for you and your goals. Reduce your carbon footprint with RECs. No solar panels required. There is no way to distinguish what part of the electricity at your location

came from what energy source in our diverse fuel portfolio.

How long can a solar system stay on a home?

Consider how long you plan to stay in your home. A residential solar system is designed to stay on a home for at least 20 years. Leases and PPAs generally are long term; some last 20 years. If you think you might move in that time, find out how installing a system will affect your ability to sell your house.

## Georgia single phase solar

---



### 10kw single phase solar inverter , 2 MPPT , Price List

The Livoltek GT1 7.0 / 8.0 / 9.0 / 10.0-T2 photovoltaic inverter is developed specifically for high-power single-phase residential models, offering compatibility with complex rooftops, private residences, villas, and small commercial ...

### Georgia Power

Georgia Power - Solar Buyback Program February 02, 2017 Maximum for single-phase customers (residential and small commercial): 25 kW  
 Maximum for three-phase customers: 100 kW  
 Terms: 5-year contract Equipment Requirements: Equipment must comply with the standards set down by Underwriters Laboratories (UL), the Institute of Electrical and



### ELECTRIC SERVICE TARIFF: SIMPLE SOLAR SCHEDULE: "SS

...

Simple Solar is a tariff that enables customers to support and foster the growth of solar energy in Georgia by enabling Georgia Power to purchase and retire RECs generated from solar energy resources. The Additional Solar REC Charge will be in addition to the customer's normal cost of

### Solar Power for Your Home ,

## Georgia Attorney General's ...

If you want to use solar power for your home, you have options. You may be able to buy or lease a system or sign a power purchase agreement. Your choice can affect how much you spend up front and over the life of the system, whether you get certain tax breaks or not, and your responsibilities when you sell your home.



 **LFP 48V 100Ah**

## Commercial Solar Georgia , Georgia Solar Program

Solarize Middle Georgia is a community-based group-purchasing program for solar energy, battery storage, and other clean energy technologies. Our campaigns help homeowners, businesses and nonprofits become more resilient, reduce energy expenses, and save on the cost of renewable energy systems by obtaining volume discounts on materials and

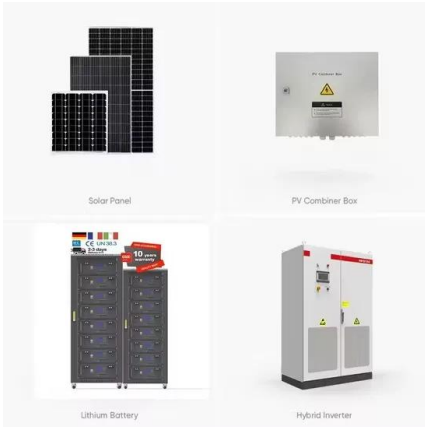
## pros vs cons of going split phase off grid

I working on my next solar system. My current 12v will be EMP wrapped and the 24v system dedicated for the well. Next systems will be 48v. I do want to be able to run my tig welder on 240v but I was thinking of just getting a dedicated 48v single phase unit vs using split phase. sunshine\_eggo Victron's little biatch. Joined Oct 26, 2021



## Georgia Home Solar And Battery Storage , GA Home Solar ...

We offer home solar and battery storage across



Georgia protected by our leading 25-year warranty. Learn more about GA home solar panels, incentives, cost, tax credits, rebates, frequently asked questions, and savings.

## Residential Solar Solutions

What solar solution is right for you? Use our residential solar adviser tool to explore considerations and estimated costs for a solar panel installation on your home. Get real life figures to help you determine the best solar program for you and your goals.



## Brightening Georgia With Solar For Lower-Income Households

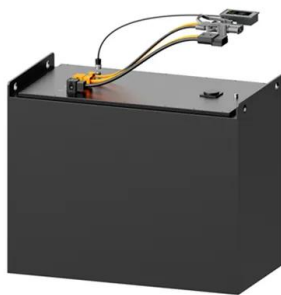
...

By making solar installations more affordable through strategically leveraging federal tax credits, grants, and discount bulk purchase opportunities, Georgia BRIGHT helps reduce power bills while at the same time envisioning a more sustainable and equitable energy future for marginalized communities, including low-income earners, families of

## 5 Best Solar Companies in Georgia

3 ???· Statewide, Georgia aims to increase the fraction of energy it produces from renewable energy sources, incentivizing the industry's best companies to bring their technology and

expertise to the Peach State. This article takes an in-depth look at the greatest solar companies for residential rooftop solar doing business in Georgia today.



## A Complete Review of the NEW SolarEdge EV Charging Single Phase

Together, these two systems create a pipeline where the energy from a solar panel can be converted and fed into the EV's battery. The SolarEdge EV Charging Single Phase Inverter - A Solar + EV Owners Dream Come True. The SolarEdge EV Charging Single Phase Inverter is the first inverter that also includes an integrated EV charging system.

## Commercial Solar Georgia , Georgia Solar Program

Georgia is full of solar power, but not among homeowners. This group wants to change that. (11/24/2018) Centerville Hosts Solarize Middle Georgia Workshop(11/24/2018) Home and business owners will soon have solar panels as an option for energy(10/22/2018) Group hopes to bring more solar power to Middle Georgia (10/23/2018) Solarize Middle



## Simple Solar FAQs

Georgia Power's Simple Solar program uses energy from renewable generation that meets the criteria approved by the Georgia Public



Service Commission. Additionally, Georgia Power's Simple Solar program purchases certified renewable energy credits (RECs) that meet specific environmental and consumer-protection standards.

## Commercial Solar Georgia , Georgia Solar Program

Solarize Middle Georgia is a community-based group-purchasing program for solar energy, battery storage, and other clean energy technologies. Our campaigns help homeowners, businesses and nonprofits become more ...



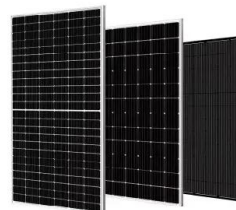
## Hosting Capacity Tool

The Hosting Capacity Tool is part of Georgia Power's 2022 Integrated Resource Plan (IRP) - a 20-year plan to transform Georgia's energy grid through a proactive, innovative, and transformational roadmap projecting o Single-phase and two-phase portions of the circuit



## Solar Power for Your Home , Georgia Attorney ...

If you want to use solar power for your home, you have options. You may be able to buy or lease a system or sign a power purchase agreement. Your choice can affect how much you spend up front and over the life of the system, whether ...



## Brightening Georgia With Solar For Lower-Income ...



By making solar installations more affordable through strategically leveraging federal tax credits, grants, and discount bulk purchase opportunities, Georgia BRIGHT helps reduce power bills while at the same ...

### Power plant profile: Butler Solar Farm, US

Butler Solar Farm is a 22MW solar PV power project. It is located in Georgia, the US. According to GlobalData, who tracks and profiles over 170,000 power plants worldwide, the project is currently active. It has been developed in a single phase. Post completion of construction, the project got commissioned in February 2016. Buy the profile here.



IP65/IP55 OUTDOOR CABINET

ALUMINUM

OUTDOOR ENERGY STORAGE CABINET

OUTDOOR MODULE CABINET

### Single-phase , Fimer Spa

Fimer offers a wide range of single-phase string inverters fitting the needs of any household that is looking to save on their energy bills while making an environmental friendly choice. Always in line with our customer's needs, our devices feature enhanced smart functionalities thanks to which homeowners can control and monitor their energy production and own consumption through ...



### Edition

This book represents the present policies and objectives of the Georgia Power Company within the revenue 11.0 Multifamily Single Phase Section 68 3-Wire, OH Service, (120V-240V), (2-6

Positions) 68 3-Phase, Commercial Solar 91 14.0  
 4-Wire, 3-Phase CT Installation, OH/UD Service  
 (Above 600A) 92



## Solar system size limits: How much does your local network allow?

Single phase: 10kW system size limit 3-phase: 30kW system size limit These limits are for 'basic' connections. Larger systems may be permitted but will require additional technical study before approval can be granted. Solar Energy: Citipower / Powercor: Single phase: Up to 5kW system size limit (by inverter)

## SOUTHERN COMPANY DISTRIBUTION Interconnection policy

single and three phase generators, with aggregate alternating current (ac) output capacity up to 10,000 kW, that operate in parallel with the Company's distribution system at voltages up to and including 34.5kV (phase to phase). This policy describes the minimum interconnection requirements; additional requirements may apply.



## Simple Solar

The Simple Solar program allows all customers the ability to support the growth of renewable



energy while reducing your electric-based carbon footprint through Renewable Energy Credits. For an additional 1.25¢ per kWh on your bill, you can match either 50% or 100% of your monthly energy usage through these credits.

## Developers' Portal

3. Commercial Transformer - typical three-phase commercial transformer installation. 4. Switching Cubicle - typical three-phase switching cubicle used in large commercial and industrial applications. 5. Underground Single - phase apartment meter cluster. 6. Single - phase underground construction temp. 7.



## Contact Us

---

For catalog requests, pricing, or partnerships, please visit:  
<https://www.ssab-proiect.eu>