

European Solar and Energy Storage Solutions

Fsr pwb 100 Lesotho



Overview

What is a pwb-100 display?

The PWB-100 is the essential installation accessory for any flat panel display. It installs easily in the wall behind any display allowing your screen to sit flush against the wall. This unit provides a neat and secure environment for the audio, video, control and power connections.

Does the pwb-100 Support IPS?

The PWB-100 now has the ability to mount 1 decorator plate device, 1 low voltage device, or 1 provided Gem box and is compatible with FSR's 4 and 6 IPS inserts. The PWB-100 is the essential installation accessory for any flat panel display. It installs easily in the wall behind any display allowing your screen to sit flush against the wall.

What's new with the pwb-100?

The PWB-100 received a new design upgrade. The PWB-100 now has the ability to mount 1 decorator plate device, 1 low voltage device, or 1 provided Gem box and is compatible with FSR's 4 and 6 IPS inserts. The PWB-100 is the essential installation accessory for any flat panel display.

Fsr pwb 100 Lesotho



Deye Official Store

10 years
warranty

FSR PWB-100-BLK Wall Box for Audio / Video and Power

The FSR PWB-100-BLK is a steel back project wall box that provides a neat and secure environment for audio, video and power connections. It contains a black cover and back box, and is the essential installation accessory for any flat panel display.

PWB-100 SPEC SHEET LIT1163D.pdf

FSR Inc. is your one stop shop for all your Pro AV connectivity needs. Discover our unique AV solutions and infrastructure products. PWB-100 SPEC SHEET LIT1163D.pdf . pdf PWB-100 SPEC SHEET LIT1163D.pdf Popular. Published on ...



PWB-100 Series Wall Box

The PWB-100 is the essential installation accessory for any flat panel display. It installs easily in the wall behind any display allowing your screen to sit flush against the wall. This unit provides a neat and secure environment for the audio, video, control and power connections.



PWB-100-WHT , PWB-100 Series Complete Wall Box and Cover

Product information for PWB-100 Series Complete Wall Box and Cover - White PWB-100-WHT manufactured by FSR, Inc.. Provided by JP Lilley & Son, Inc. FSR LIT1163B PWB-100 SPEC SHEET.pdf 2181 kb - Data Sheet Project List Request Quote Suggested Products. 2 Gang Low Voltage Mounting Bracket (for LXB-200, NXT-350, WPAD12L and DXW-2/E/EU)



FSR Plasma/LCD Connection Wall Box

The PWB-100 Connection Wall Box is an excellent product that helps you get one step closer to the movie theater experience. It installs easily in the wall behind any flat panel display and keeps your audio, video, control and power cables organized and hidden. FSR PWB-100 Drawing Dimension (PDF) FSR PWB-100 Drawing Installation (PDF) PART

PWB-100-WHT , PWB-100 Series Complete Wall Box and Cover

Designed to mount along the bottom edge behind a Plasma or LCD display, PWB-100 provides a single point for all connections. The unit accommodates up to six single space Intelligent Plate Solution plates and a UL listed single gang gem box for AC power. PWB is available in white or black and is suitable for painting or other finishing.



PWB-100 Series Wall Box

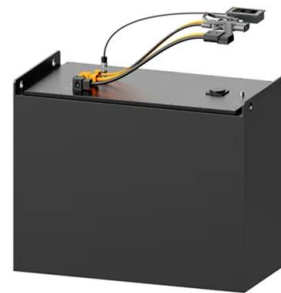
The PWB-100-WHT contains a white cover and back box for audio, video and power connections. The backbox now has the ability to



mount 1 decora device, 1 low voltage device, or 1 provided Gem box and is compatible with FSR's 4 and 6 IPS inserts. It installs easily in the wall behind any display allowing your screen to sit flush against the wall.

PWB-100 Project Wall Box

The PWB-100 is the essential installation accessory for any flat panel display. It installs easily in the wall behind any display allowing your screen to sit flush against the wall. This unit provides a neat and secure environment for the audio, video, control and power connections. The PWB-100 is 11"W x 5.25"H x 3.57"D and installs easily



PWB-100 Series Wall Box

The PWB-100 has a new design upgrade. The PWB-100 now has the ability to mount 1 decorator plate device, 1 low voltage device, or 1 provided Gem box and is compatible with FSR's 4 and 6 IPS inserts. The PWB-100 is the essential installation accessory for any flat panel display. It installs easily in the wall behind any display allowing your screen to sit flush against the wall.

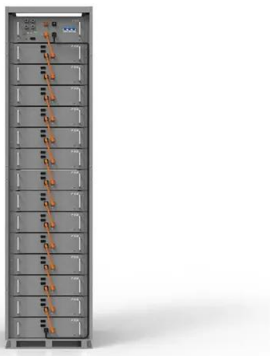
FSR Plasma/LCD Connection Wall Box

The PWB-100 Connection Wall Box is an excellent product that helps you get one step closer to the movie theater experience. It installs easily in the wall behind any flat panel display and keeps your audio, video, control and power cables organized and hidden.



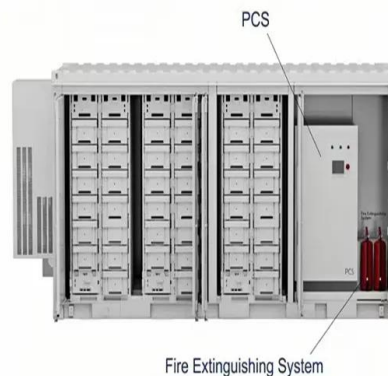
PWB-100 Project Wall Box

The PWB-100 Connection Wall Box is an excellent product that helps you get one step closer to the movie theater experience. It installs easily in the wall behind any flat panel display and keeps your audio, video, control and power cables ...



PWB-320 / PWB-323

PWB-320-ESK. Kit consisting of full size box, with 2 equipment shelves and finished trim ring .
 18009. PWB-320-AC2 Internal AC bracket with 2 Decora SpikeShield(TM) 15 amp Receptacles
 18010. PWB-320-AC3. Internal AC bracket with 3 Decora SpikeShield(TM) 15 amp Receptacles .
 18007. PWB-320-TR Decorative finished trim ring only (fits PWB-320 and



PWB-320XL / 323XL PWB-320XL & 323XL

om 3/8" to 11¾" including multiple VESA 100 hole n locations. The PWB-32xXL-CV is an optional powder coated cover ounded cable exits. The vented cover mounts to FSR PWB boxes are punched in four locations with FSR's Triple Play Mounting Solution which provides three different options for mounting conduit,

ESS



cabling, plates, and

PWB-100-WHT , PWB-100 Series Complete Wall Box and Cover

PWB-100 is the essential installation accessory for any flat panel display. It installs easily in the wall behind any display allowing screen to sit flush against the wall. This unit provides a neat and secure environment for the audio, video, control and power connections.



PWB-100 Plasma/Flat Panel

PWB-100 Plasma/Flat Panel Display Wall Box Metal Products Group P W B-1 0 The PWB-100 is the essential installation accessory for any flat panel display. It installs easily in the wall behind any dis-play allowing your screen to sit flush against the wall. This unit provides a neat and secure environment for the audio, video, control and power

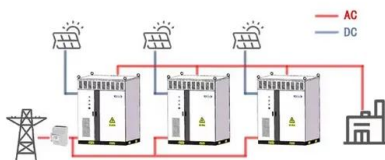
PWB-100 OVERALL DIMENSIONS PWB-100 B W P P lasm /F t ...

The PWB-100 is the essential installation accessory for any flat panel display. It installs easily in the wall behind any dis-play allowing

your screen to sit flush against the wall. This unit provides a neat and secure environment for the audio, video, control and power connections. The PWB-100 is 11"W x 5.25"H x 3.57"D and installs easi-



WORKING PRINCIPLE



Large Project Wall Box

The PWB-450 Project Wall Box is the newest addition to the FSR line of wall boxes. The PWB-FR-450 and PWB-450 wall box's bracketry have also been designed so you can remove one or all of the internal brackets to best layout the box to match your needs. With it's larger format this box can accommodate Crestron's DM-RMC-4K-SCALER-C 4K receiver

FSR PWB-100-WHT-BOX Plasma Flat Panel TV Display Wall Box, ...

The PWB-100-WHT Flat Panel Display Wall Box (White) from FSR is designed to safely and securely handle audio, video, control and power connections for your flat panel display. This sturdy box can easily be mounted between two studs in new or old construction and allows for cable entries to be mounted on the top or bottom based on your



PWB-100 Installation Instructions LIT1748

fsr 244 bergen boulevard, woodland park, nj
07424, phone: 973.785.4347 - fax: 973.785.4207
43354 lit1748 pwb-100 installation instructions



new work installation wall opening: 11" x 5-1/4"
old work installation wall opening: 11" x 5-1/4"
studs on 16" centers shown with accessory low-voltage conduit entry box (2 - #6-32 x 1/4" pan head screws)

PWB-450 Large Project Wall Box Infrastructure from the ...

PWB-353 Project Wall Box PWB-100 Project Wall Box PWB-253 Project Wall Box PWB-320/323 Project Wall Boxes Patent No. US 6,881,080 B2 Patent Number US D553,306 S PWB-450 Large Project Wall Box Infrastructure from the ground up The standard PWB-450 is the largest of our PWB Series Wall Boxes. Two mounting brackets are available for mounting the



Contact Us

For catalog requests, pricing, or partnerships, please visit:
<https://www.ssab-proiect.eu>