

European Solar and Energy Storage Solutions

Frameless photovoltaic panels waterproof



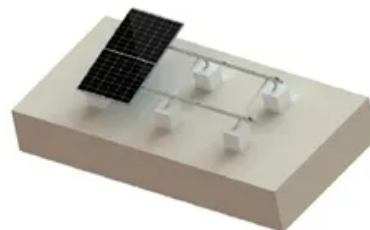
TILE ROOF SOLAR MOUNTING SYATEM



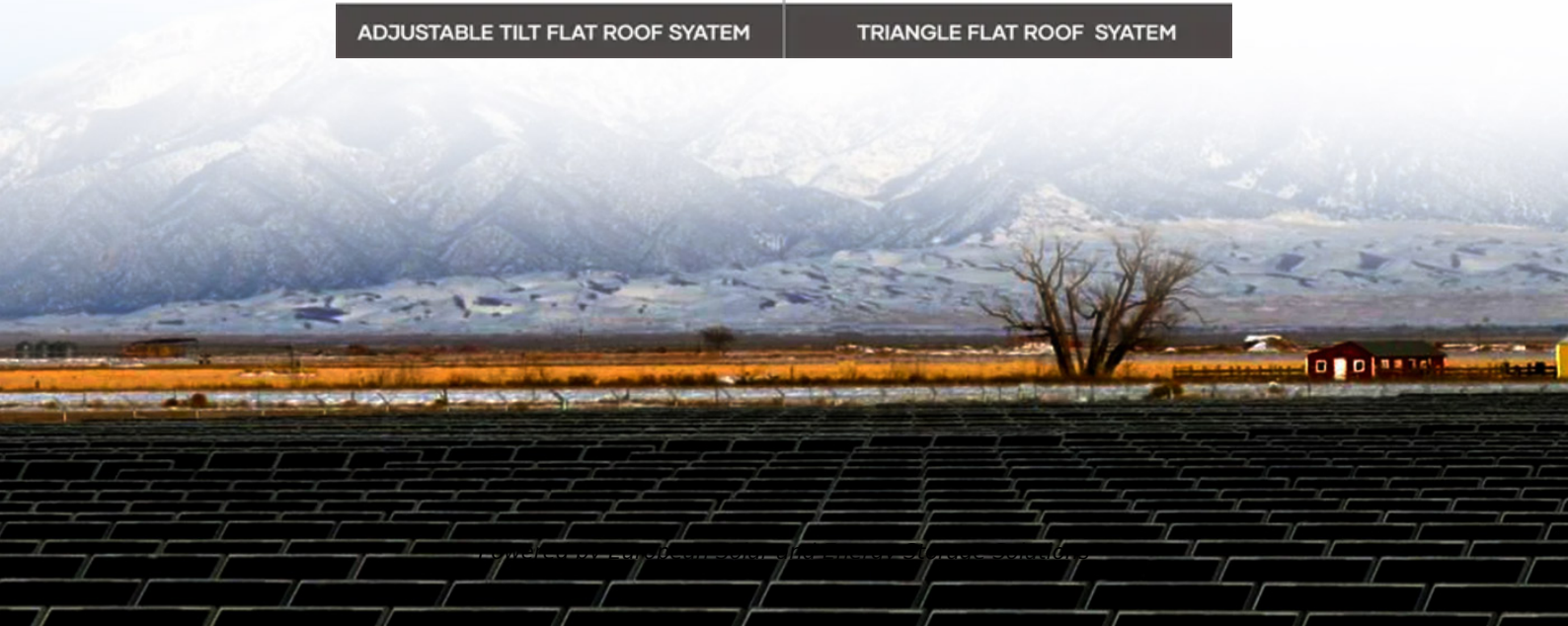
STANDING SEAM ROOF SYATEM



ADJUSTABLE TILT FLAT ROOF SYATEM



TRIANGLE FLAT ROOF SYATEM



Overview

What are frameless bifacial solar panels?

In simple terms, in frameless bifacial solar panels solar electricity is generated by bifacial modules on both sides of the panel. In contrast to conventional monofacial opaque-back sheeted panels, bifacial modules show both the front and back of the solar cells.

What is a frameless solar panel?

The durability and functionality of the joint structure are eventually determined by how much stress is built up in the joint structure. There is no frame, which is a clear definition of a frameless Solar Panels. Solar cells are sandwiched between two pieces of glass in a dual glass, also known as glass-on-glass or glass-glass, among other titles.

Why do bifacial solar panels look unattractive?

Traditional solar panels look somewhat unattractive because they are mounted on brackets with aluminum frames that do not match the architecture of the building or house. When a customer for residential solar wishes to upgrade and beautify his rooftop frameless bifacial solar panels come into the picture.

Is Trina Solar a dual glass/frameless module?

Trina Solar manufactures the PDG5, a 60-cell dual glass module. It comes in at around 255 W, has a 15.2% module efficiency and is UL certified. Trina offers a 30-year warranty on the product. SB: What is a dual glass/frameless module?

JT: A traditional module is a silicon sandwich.

Why should a frameless module have a glass panel?

Having a glass panel, front and back, gives better mechanical protection

during transportation and installation. There's also no grounding for the frame because there is no metal for the modules. SB: What type of customer wants a frameless module?

JT: These modules target any customer.

Are frameless roof modules a good idea?

Frameless modules are becoming more than just an aesthetics-pleaser on residential roofs. There are many benefits to them — better fire protection, better moisture barrier, no grounding needed — but there are also many installation aspects that take some getting used to. How are they mounted?

What about wire management?

What are the extra costs?

Frameless photovoltaic panels waterproof



Bespoke Glass Solutions , Precision Glass Ltd

"Precision Glass have just completed an installation of a glass panel to our staircase. The work was meticulous & the finish is first class. I have no hesitation in recommending this firm. They ...

Techno-economic Analysis of Rooftop Photovoltaic System

...

Thin-frameless solar panel of JLeaf m-si 255 Wp [21] shown in Table 1. Another assumption was electricity costs, taken by the average value of payments from all 1 of the PLN electricity. The ...



SolarGain® Solar Panel Sealants

SolarGain® Edge Sealant is a desiccated butyl/desiccated polyisobutylene (PIB) solar panel sealant designed for use in a wide variety of photovoltaic (PV) modules. Trusted by PV module manufacturers for more ...

Lumos Solar , Solar Panel Supplier , Architectural Solar

...

Lumos LSX and GSX Module systems can be easily integrated into virtually any new or existing structure for use in carports, facades, awnings, canopies, or any structure you can imagine. Our SolarScape pre-engineered, pre-fabricated ...



- LiFePO₄
- Wide temp: -20°C to 55°C
- Easy to expand
- Floor mount&wall mount
- Intelligent BMS
- Cycle Life:≥6000
- Warranty :10 years

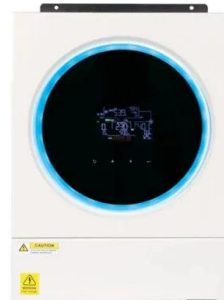


80-Watt E.Flex Portable Monocrystalline Solar Panel, ...

ETTE surfaces are also scratch-resistant and easy to clean with a wet cloth the IP67 waterproof will protect EFFLUX solar panels from water splashing; Portable frameless lamination and light weight construction easy to carry This solar ...

LONGi ROOF 4.0 -LONGi

LONGi ROOF 4.0 BIPV system integrates photovoltaic power generation system, is a set of structural integrity, in line with the architectural design requirements of high-quality roof metal maintenance system, including purlins, inner panels, ...



All-aluminum waterproof carport solar mounting ...

All-aluminum waterproof carport solar mounting system highly pre-assembled main structure for solar modules landscape or portrait 5°/ 8°/10°inclination or customized and engineered to project maximal span up to 5.4m cover up to 2 ...

BIPV roof mounting system with solar panels

- Suitable for both framed / frameless bifacial solar panel installation; Installation tips for our BIPV roof mounts: (1) Installation troughs on steel beams with bolts; (2) Fix baffle, lateral trough and ...



Waterproof Carport Solar Mounting System

The MRac waterproof carport solar mounting system is a pre-assembled, waterproof mount for residential and commercial solar power projects. Our waterproof carport mounts can be tailored to meet site requirements, providing ...

Metal Roof PV Mounts and Systems (Rail-Based and Clamp Direct ...

Design of solar panel mounts facilitates load adjustment and distribution. Supporting high wind and heavy snow loads. Durable, all-aluminum finish for corrosion resistance. Pre-assembled ...



BIPV roof mounting system with solar panels

- Suitable for both framed / frameless bifacial solar panel installation; Installation tips for our BIPV roof mounts: (1) Installation troughs on steel beams with bolts; (2) Fix baffle, lateral trough and pv modules; Please find attached our BIPV ...



Mid Clamps for Frameless Solar Panel Mounting

Product Description : Our standard length of frameless solar panel mid clamps can be 60 mm, 80 mm, 100 mm, other sizes can be. bespoke . This alum mid clamps are specially designed for frameless solar panels / glass solar PV ...



Contact Us

For catalog requests, pricing, or partnerships, please visit:
<https://www.ssab-proiect.eu>