

European Solar and Energy Storage Solutions

Does the photovoltaic panels need to be cleared of snow



Overview

Clearing snow from solar panels is crucial to maintain their efficiency during winter, as snow cover reduces sunlight exposure and hinders energy production.

Clearing snow from solar panels is crucial to maintain their efficiency during winter, as snow cover reduces sunlight exposure and hinders energy production.

Therefore, removing snow from solar panels is crucial to maintain optimal energy generation, maximizing the return on investment, and building a safe home.

Yes, you can clear snow off your panels. BUT, you may not always need to do so. Solar panels are often installed at a slight incline, allowing snow to organically tip and fall off the panel.

By removing snow, you enable the panels to resume optimal energy production. Maximizing Energy Output: When solar panels are buried in snow, they produce less electricity or might not work. Do solar panels remove snow?

Yes, automatic solar panel snow removal devices such as heated panels are available. These systems reduce the need for manual labor and lower the risk of damaging your solar panels. How does the angle of solar panel installation affect snow accumulation?

.

Can solar panels generate solar energy if it is covered in snow?

Solar panels cannot generate solar energy if they are covered in snow. The good news is that you can eliminate this issue by either waiting for gravity to do its job and having the snow fall off or waiting for it to melt. Another option is cleaning them off yourself.

Should solar panels be kept clear of snow and ice?

Keeping solar panels clear of snow and ice is especially vital since those panels will likely absorb even less sunlight during the winter months than they do in the summertime.

How to get rid of snow quickly from solar panels?

Putting in a heating system is one way to get rid of snow quickly from solar panels. These systems are made to melt snow and ice that builds up on the panels, so they can keep making energy even when snow covers them for long periods of time. These systems are usually put in place under the solar panels.

Can solar panels withstand heavy snow?

Don't Ignore Heavy Snow: Do not let heavy snow accumulate on your solar panels for too long, as it can significantly reduce efficiency and potentially cause damage. Your solar panels rely on photovoltaic (PV) cells, located in the front layers, to capture sunlight and convert it into electricity.

Should solar panels be buried in snow?

Solar panels need direct sunlight to generate electricity effectively. By removing snow, you enable the panels to resume optimal energy production. **Maximizing Energy Output:** When solar panels are buried in snow, they produce less electricity or might not work.

Does the photovoltaic panels need to be cleared of snow

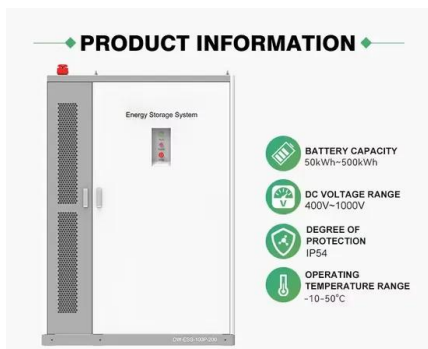
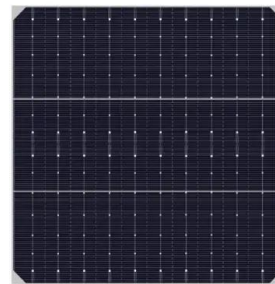


9 Ways to Clear & Keep Snow Off Solar Panels

Keeping solar panels clear of snow and ice is especially vital since those panels will likely absorb even less sunlight during the winter months than they do in the summertime. Since your panels will already be providing ...

Snow On Solar Panels (Dangers + Solutions)

How Do I Keep My Panels Snow Free? You can do some things to be proactive and reduce the amount of snow that accumulates on your solar panels. In addition, there are many things that you can do to clear snow that ...



How to Remove Snow from Solar Panels

Regular maintenance, cleaning, and winter preparedness will help you maximize your solar panel system and enjoy the benefits of clean and sustainable solar energy year-round. Take proactive steps to remove snow from your solar ...

How to Remove Snow from Solar Panels

Removing snow from solar panels is essential to

maintain efficiency and maximize energy production during winter. By understanding the impact of snow, assessing safety risks, employing preventive measures, and using safe ...



Do solar panels need direct sunlight to work?

Do solar panels work when it snows? Yes, solar panels do produce power in snowy conditions - as long as the snow isn't too heavy. Actually, one of the lesser known facts about solar panels is that they work more ideally in colder ...

How to Keep Your Solar Panels Running During Winter Weather

Installing solar panels can be a move toward long-term energy savings for a lot of people. Though inflation is cooling, energy costs have increased for a lot of people over the past two years



How Does Snow Affect Solar Panels and What Can You ...

If you've mounted your panels at an angle, you may not have to remove the snow manually. If a panel remains covered for a significant amount of time, you'll want to clear your panels with a gentle brush. Snow removal ...

How to: Solar Panel Snow Removal

The easiest, safest option for most homeowners, are solar panel snow rakes. These feature a soft, rubbery rake attached to a long telescoping pole that helps you easily access roof-top panels safely from the ground. The ...



How to Keep Snow off Solar Panels

Snow makes solar panels less useful because it blocks sunlight from reaching the photovoltaic cells on the top of the panel. Putting snow on the panels makes them physically impassable, which lowers the amount of sunlight that can be turned ...

Snow on Solar Panels: Everything You Need to Know

Do I Need to Clear Snow From My Solar Panels? Your solar panels are covered by a layer of snow, what should you do? Our recommended method of snow removal is to simply let the snow melt off naturally. What ...







ENERGY STORAGE SYSTEM

Product Model
HJ-ESS-215A(100KW/215KWh)
HJ-ESS-115A(50KW 115KWh)

Dimensions
1600*1280*2200mm
1600*1200*2000mm

Rated Battery Capacity
215KWH/115KWH

Battery Cooling Method
Air Cooled/Liquid Cooled



Contact Us

For catalog requests, pricing, or partnerships, please visit:
<https://www.ssab-proiect.eu>