

European Solar and Energy Storage Solutions

Do photovoltaic panels need fuses



Overview

The short answer is that you do not need a fuse or a breaker if your solar panel or array is installed correctly.

The short answer is that you do not need a fuse or a breaker if your solar panel or array is installed correctly.

You need to fuse solar panels or photovoltaic systems to prevent a surge of electricity. This can occur due to lightning, and you need to make sure that you use a fast-blow fuse on your system.

The short answer is yes, you should put a fuse on your solar panel. The fuse will protect your solar panel from overloading and damaging your electrical system.

In most cases, a solar system fuse is required between a solar panel and its charge controller because fuses and circuit breakers protect the wiring from overheating.

DC fuses are essential components in solar PV systems, providing protection against overcurrent and short circuits. Do solar panels need fuses?

But if you employ parallel wiring, your solar array will likely require fuses because the total amperage in a short circuit may be high enough to cause problems. To understand when and how to fuse solar panels in your off-grid camper van electrical system, we need to take a closer look at what happens to Amps and Volts in each wiring configuration.

Do I need a fuse or a breaker for my solar panel?

The short answer is that you do not need a fuse or a breaker if your solar panel or array is installed correctly. A fuse or breaker is an accessory that provides an additional layer of safety for your solar components, and many solar contractors recommend that you use them.

What is a solar panel fuse?

What is a solar panel fuse? A solar panel fuse is a crucial component in solar energy systems. Let's delve into its significance and role: Solar panel fuses are designed to protect individual panels and their cables. They play a critical role in safeguarding the system from fault currents, such as DC breakers preventing short circuits.

What size solar panel fuse do I Need?

The size of the fuse will depend on the amperage rating of your solar panel system. For example, if you have a 30 amp rated solar panel system, then you'll need a 30 amp fuse. As a general rule of thumb, it's always best to err on the side of caution and go with a bigger fuse than what you think you need.

Do PV panels need a fuse?

In the event of a short circuit in one of the panels, there will never be more than 12.09 Amps flowing through the PV system. This total short circuit current is below the 15 Amps that these panels are designed to handle, so a fuse is not required. If you decided to add a fuse anyway it would never blow, so there's really no point.

Why do I need to fuse solar panels wired in parallel?

To understand why you need to fuse solar panels wired in parallel, we need to look at a couple of solar panel specs: short circuit current (Isc) and maximum series fuse rating. Short circuit current (Isc) is the maximum current that your solar panel will produce in the event of a short circuit.

Do photovoltaic panels need fuses

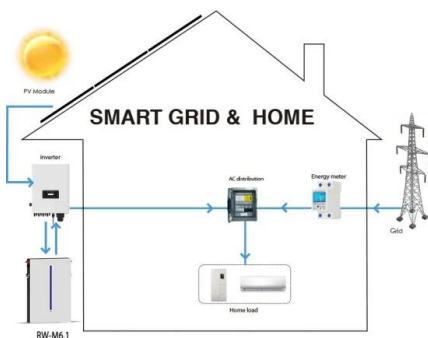


Solar Panel Fuse or Breaker: Which is Better?

What Type/Size of Fuse You Need? Types of Fuse: The common types are Photovoltaic fuses and Midget fuses. 1. PV fuse is made up to protect panels from over currents or reverse currents the system generates. ...

How To Connect Solar Panels To Fuse Box » Wiring Work

As the world moves towards sustainability and renewable energy, the need for green energy sources has become increasingly important. One of the most popular options is solar power, but connecting your solar ...



How to Properly Fuse Your Solar System

Sometimes you need to fuse your solar array, and sometimes you don't. There's quite a bit of reasoning behind the decision, but ultimately... the NEC (National Electric Code) makes the decision for us. By the end of this ...

When To Fuse, When not to Fuse? , Greentech Renewables

Now, were a fault to occur in one string in this

system do you think we need to have fuses on each strings output? Let's discover the answer. I've installed a PV system with two string of solar ...



How to properly fuse a solar PV system - Windy Nation ...

There are various free fuse and wire size calculators online that you should use in completing your solar PV system. If your take your time and use the right combination of rated parts, then the system should work well and ...

What is a Solar Fuse and Why or When Do You Need It?

This article looks at the solar fuse, why you need it, and how to go about fusing a solar system, among other things about PV fuses. This article looks at the solar fuse, why you need it, and how to go about fusing a solar system, among ...

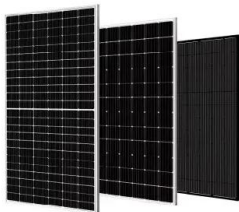


Sizing suitable fuse for PV system

Normally, In a complete solar power system, the fuse can be added in between different components, such as from solar panel array to charge controller, controller-battery bank, battery bank-inverter. For each part of units, ...

Fuse Your Solar Power System: How to Do It Right?

If you're installing a solar panel system on your home, you should add a fuse between the panels and the charge controller. This will protect against power surges and overcurrent, while also preventing the wires from ...



What do I need for breakers/fuses etc? (highly technical)

is charge controller mppt, and what is max pv voltage? You may want all panels in series if it can handle. Lower risk of melted wires from pv to cc, but increased risk of jolt. The solar panels ...

When Do You Need to Fuse Solar Panels? (and how to ...

You typically do not need to fuse solar panels if you wire them in series, because the amperage of a short circuit will not exceed what your solar panel or wiring can handle. But if you employ parallel wiring, your solar array ...



-  **Efficient Higher Revenue**
 - Max. Efficiency 97.5%
 - Max. PV Input Voltage 600V
 - 100% Peak Output Power
 - 2-MPP Trackers, 100% DC Input Demitting
 - Max. PV Input Current 20A, Compatible with High-Power Modules
-  **Intelligent Simple O&M**
 - IP66 Protection Degree: support outdoor installation
 - Smart 1-1r Curve Diagnosis Function: locate PV wiring faults accurately and automatically detect faults
 - DC & AC Input & Output: prevent lightning damage
 - Battery Reverse Connection Protection
-  **Flexible Abundant Configuration**
 - Plug & Play, EPT Switching Under 20ms
 - Compatible with Lead-acid and Lithium Batteries
 - Max. 6 Units Inverter Parallel
 - AFC Function (Optional): when an arc fault is detected the inverter immediately stops operation

Solar panel fuse or breaker? (Circuit Setup + Why)

Do you need a fuse or breaker for your solar panel? The short answer is that you do not need a fuse or a breaker if your solar panel or array is installed correctly. A fuse or breaker is an accessory that provides an ...



Do Solar Panels Need Fuses? (Requirements & Size)

The most critical area requiring a fuse in the solar panel is the Charge controller and the battery bank. You may also prefer having a fuse in between the charge controller and the solar panel. The main point is that the fuse size must be ...



Solar Fuse & Breaker Sizing - SolarPowerCombinerBox

What Size Fuse or Breaker for Solar Panel String?
What is a "Solar String"? In larger solar photovoltaic (PV) systems, multiple solar panels are connected in series in a string to increase ...

Contact Us

For catalog requests, pricing, or partnerships, please visit:
<https://www.ssab-proiect.eu>