

## European Solar and Energy Storage Solutions

# Do double-glass photovoltaic panels have aluminum frames



## Overview

---

There is a clear distinction between single and double glass solar panels. This difference should be clear by this- .

The front surface of double glass mono solar cells has an emitter layer and the back side has a dark covering. Passivated Emitter and Rear Cell.

Typically, solar panels have a front glass panel and a back plastic sheet. These single-sided glass panels are supported by frames across the entire construction. Manufacturers have.

The double glass module, as the name implies, is a construction in which the typical aluminum frames and back sheet substrate are replaced by another glass panel.

The double glass module, as the name implies, is a construction in which the typical aluminum frames and back sheet substrate are replaced by another glass panel.

They feature 2.0 mm heat-strengthened glass, with anti-reflective coating. The modules have IP68 junction boxes and anodized aluminum alloy frames. How much does a double glass panel weigh?

The double-glass panels measure 2,278 mm x 1,134 x 32 mm and weigh 32 kg. They feature 2.0 mm heat-strengthened glass, with anti-reflective coating. The modules have IP68 junction boxes and anodized aluminum alloy frames. They can operate with a system voltage of 1,500 V and in temperatures ranging between -40 C and 85 C.

Are solar panels frameless or glass-on-glass?

Keep in mind that frameless is not a synonym for glass-on-glass. SolarWorld's glass-glass module (the Sunmodule Protect) has an aluminum frame. On the other end, Solaria's range of frameless crystalline solar panels have a backsheet instead of two glass pieces. So make sure you're dealing with a true frameless module.

How many volts does a double-glass panel have?

They have an open-circuit voltage ranging from 51.0 V to 51.6 V and a short-circuit current of 14.02 A to 14.20 A. The double-glass panels measure 2,278 mm x 1,134 x 32 mm and weigh 32 kg. They feature 2.0 mm heat-strengthened glass, with anti-reflective coating. The modules have IP68 junction boxes and anodized aluminum alloy frames.

Are solar panels frameless?

SolarWorld's glass-glass module (the Sunmodule Protect) has an aluminum frame. On the other end, Solaria's range of frameless crystalline solar panels have a backsheet instead of two glass pieces. So make sure you're dealing with a true frameless module. The most notable benefit is no need for grounding.

Are glass-glass modules frameless?

Glass-glass modules can also be frameless, which helps eliminate the cost of an extruded aluminum frame. However, glass-glass models with frames have a lower risk of breakage. As a result, most glass-glass modules come with frames in place. Compared with standard glass backsheet technology, framed modules with two layers of glass are heavier.

Are frameless crystalline solar panels a good choice?

On the other end, Solaria's range of frameless crystalline solar panels have a backsheet instead of two glass pieces. So make sure you're dealing with a true frameless module. The most notable benefit is no need for grounding. Without a metal frame, frameless modules are less likely to shock workers.

## Do double-glass photovoltaic panels have aluminum frames

---



### What Are Solar Panels Made Of And How Do They Work?

This article will delve into the main components of solar panels, from the core photovoltaic cells to critical elements such as encapsulation materials, frames, and junction boxes. We will analyze ...

### What is the solar panel thickness in 2020?

3. Now the new double glass /bifacial solar panel is becoming more and more popular because of its high power. But the solar glass is different from common solar panels, the glass thickness can be 2.0mm and ...



### Automated Solar Panel Disassembly Equipment , NPC

...

### Talesun's new dual glass panel with aluminum frame is ...

The TD660P double glass multicrystalline panels come in 250W to 265W 60-cell (6×10) 1,000VDC configurations. Panel efficiencies range from 15.2% to 16.1%. Front-side tempered glass is 2mm

We provide solar panel disassembly equipment for recycling solar panels. Product lineups Frame & J-Box Separator Specialized for separating aluminum frame and J-Box. (multi-use for unbroken and broken glass), can also be ...



## Framed Or frameless? New installation solutions for double glass

The installed dual-glass photovoltaic system has a working temperature 4-6 ° C lower than other solutions, which greatly increases the power generation. For roof photovoltaic systems, single ...

## A Comprehensive Guide to Bifacial Solar Panels

Canadian Solar bifacial panels combine the advanced BSC technology with double glass module manufacturing expertise. The result are the top-of-the-line BiKu bifacial panels which are used for utility-scale projects. ...



## Functions & Advantages of Using Aluminum in Solar Panel Frame

These frames secure and seal important components, solar back sheets, and glass coverings in solar panels. Serving as a robust yet lightweight structure, the aluminum frame not only ...



## Aluminum solar panel frame for double glass solar ...

Solar panel frame is also called solar panel aluminum frame, It is the most important part in assembling for Solar Panel. solar panel frame is an extruded aluminum frame which used to seal and fix solar module components. It can ...



## Solar Panel Frame , Aluminum Solar Panel Frame Manufacturer

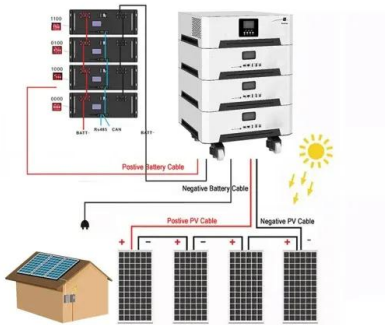
With superior strength, our solar panel aluminum frames offer robust support for your solar panels, even in challenging environments, ensuring their stability and performance. Corrosion ...



## Automated Solar Panel Disassembly Equipment , NPC incorporated

We provide solar panel disassembly equipment for recycling solar panels. Product lineups Frame & J-Box Separator Specialized for separating aluminum frame and J-Box. (multi-use for ...





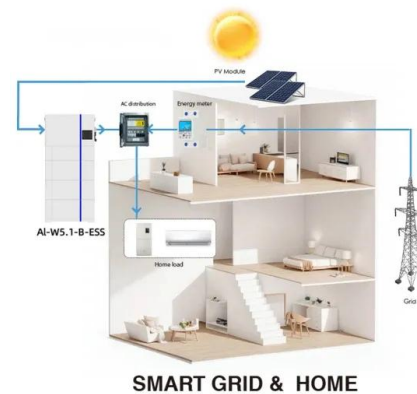
## Dual-glass vs glass-backsheet: The winning formula for ...

Glass-glass modules can also be frameless, which helps eliminate the cost of an extruded aluminum frame. However, glass-glass models with frames have a lower risk of breakage. As a result, most glass-glass ...

## Knowledge Center: the Production Process of Solar Aluminum Frame

As a pillar industry of new energy, photovoltaic power generation has become a development trend. In recent years, photovoltaic module companies have sprung up all over the country.

...



## DAH Solar unveils frameless double-glass TOPCon panels

The double-glass panels measure 2,278 mm x 1,134 x 32 mm and weigh 32 kg. They feature 2.0 mm heat-strengthened glass, with anti-reflective coating. The modules have IP68 junction boxes and anodized ...



## Solar Photovoltaic Systems: Integrated Solutions from ...

The aluminum frame seals and secures the solar cell module between the glass cover and back plate, ensuring structural stability and extending battery lifespan. Aluminum alloy, with its moderate price, strength, processability, corrosion ...



## Contact Us

---

For catalog requests, pricing, or partnerships, please visit:  
<https://www.ssab-proiect.eu>