

## European Solar and Energy Storage Solutions

# Design specification for photovoltaic panel support piers



## Overview

---

How is a ground mounted PV solar panel Foundation designed?

This case study focuses on the design of a ground mounted PV solar panel foundation using the engineering software program spMats. The selected solar panel is known as Top-of-Pole Mount (TPM), where it is designed to install quickly and provide a secure mounting structure for PV modules on a single pole.

What are solar photovoltaic design guidelines?

In addition to the IRC and IBC, the Structural Engineers Association of California (SEAOC) has published solar photovoltaic (PV) design guidelines, which provide specific recommendations for solar array installations on low-slope roofs 3.

What are the structural requirements for solar panels?

Structural requirements for solar panels are crucial to ensure their durability, safety, and efficient performance. These requirements vary depending on the type of installation, such as rooftop or ground-mounted systems, as well as the specific location and environmental factors.

What are the design and engineering requirements for solar panels?

These requirements vary depending on the type of installation, such as rooftop or ground-mounted systems, as well as the specific location and environmental factors. Proper design and engineering of solar panel structures must take into account several factors, such as wind loads, snow loads, and seismic forces.

What is the best foundation support for ground mounted PV arrays?

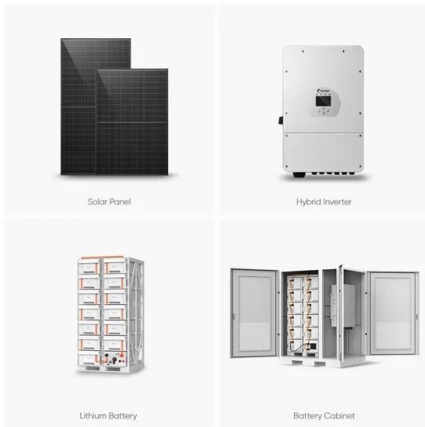
Drilled concrete piers and driven steel piles have been, and remain the most typical foundation supports for ground mounted PV arrays. However, there has been a push for "out-of-the-box" foundation design options including shallow

grade beams, ballast blocks, helical anchors, and ground screws.

What are the design considerations for solar panel mounting structures?

Design considerations for solar panel mounting structures include factors related to structural integrity, efficiency, safety, and aesthetics. This can involve wind, snow, and seismic loads, ventilation, drainage, panel orientation, and spacing, as well as grounding and electrical components.

## Design specification for photovoltaic panel support piers



### Technical Specifications for On-site Solar Photovoltaic Systems

The Federal Energy Management Program (FEMP) provides this tool to federal agencies seeking to procure solar photovoltaic (PV) systems with a customizable set of technical specifications. ...

### Overview of Earth Anchors For PV Ground Mounted Arrays

Drilled concrete piers and driven steel piles have been, and remain the most typical foundation support for ground mounted PV arrays, but more recently there has been a push for "out-of-the ...



### Structural Requirements for Solar Panels -- Exactus ...

An essential aspect of the structural requirements for solar panels is the specification of minimum design loads. These ensure the solar panel mounting system can withstand various forces, such as wind, snow, and ...



### Foundation Alternatives for Ground Mount Solar Panel Installations

In this paper results of tension tests on driven fin piles proposed to support the solar panel arrays are presented. The piles consisted of steel open pipe piles with four fins ...



## Standards and Requirements for Solar Equipment, Installation, ...

rooftop PV systems to be installed according to the manufacturer's instructions, the National Electrical Code, and Underwriters Laboratories product safety standards [such as UL 1703 ...

## Design and Analysis of Steel Support Structures Used in ...

steel support structure and its key design parameters, calculation method, and finite element analysis (FEA) detailed with a case study on a solar power plant in Turkey are described to ...



## How to Design and Install a Solar PV System?

Suppose, in our case the load is 3000 Wh/per day. To know the needed total W Peak of a solar panel capacity, we use PFG factor i.e. Total W Peak of PV panel capacity =  $3000 / 3.2$  (PFG) = 931 W Peak. Now, the required number of PV ...

## Overview of Earth Anchors For PV Ground Mounted Arrays

Drilled Cast-in-Place Concrete Piers: 12" diameter piers; 6'-0" deep piers for the (2) Back Legs; 5'-0" deep piers for the (2) Front Legs; Rebar cages required (amount dependent on seismic ...



## White Paper: Foundation Selection For Ground ...

Foundation selection is critical for a cost effective installation of PV solar panel support structures. Lack of proper investigation of subsurface conditions can lead to selection of the wrong foundation type and can result in ...

## Structural design and simulation analysis of fixed adjustable

Saving construction materials and reducing construction costs provide a basis for the reasonable design of photovoltaic power station supports, and also provide a reference for ...



## Contact Us

For catalog requests, pricing, or partnerships, please visit:  
<https://www.ssab-proiect.eu>