

## European Solar and Energy Storage Solutions

# Cosda photovoltaic inverter fault code f02

**18650** 3.7V  
Li-ion  
RECHARGEABLE BATTERY

**2000mAh**



## Overview

---

My inverter turned off earlier today with F02 which is "Internal temp too high" according to the manual. I have switched over to Eskom and disconnected the PV. It is still showing F02 and the fans are on full blast. The on/off button the panel doesn't seem to do anything. How to I get it to turn on again?

I am assuming it should have cooled .

My inverter turned off earlier today with F02 which is "Internal temp too high" according to the manual. I have switched over to Eskom and disconnected the PV. It is still showing F02 and the fans are on full blast. The on/off button the panel doesn't seem to do anything. How to I get it to turn on again?

I am assuming it should have cooled .

In this post, we'll answer your questions about inverter error codes, including:  
What is inventor error?

What are error codes?

What causes inverter failure?

How often do inverters fail?

What does it mean if your inverter is running hot?

We'll also get into details on the error codes of the Fronius Inverter, Sungrow Inverters, ABB Inverters .

It is almost certain that replacing the batteries will get your UPS back into working order. I've seen several report the F02 fault code when it was really the batteries that had failed, the most recent being the 1000 VA version of the UPS you have.

This troubleshooting how-to guide can help technicians of all experience levels get the electrons flowing again, ideally with a single truck roll. Whether the

repair is needed at a residential PV installation or a utility-scale solar plant, these steps can help fix problems safely and efficiently.

Check for tripping of the miniature circuit-breaker. Check the grid voltage and connection on the inverter. If the voltage is outside the tolerance range, ask your utility grid supplier for a solution. If the voltage is within the tolerance range and the error code remains, contact us for an inspection. What are solar inverter error codes?

Solar inverter error codes notify you of a situation threatening the normal operation of your solar power system. Many different things can go wrong and disrupt electricity generation from a solar PV system. The inverter will detect it and generate corresponding error codes to notify you.

What if my Sungrow solar inverter has an error code?

When your SunGrow solar inverter encounters issues, it communicates them through error codes. Below is a breakdown of common error codes, their meanings, and steps for resolution: Check grid voltage; if beyond permissible range, consult your electricity company. If within range, contact us on 1300 054 488 for assistance.

What does error code 23 mean on a goodwe solar inverter?

When your Goodwe solar inverter experiences faults, it communicates them through error codes, indicating the nature of the problem. Explore the following error codes and their potential solutions: • Error Code 23: Indicates electricity loss, signalling a fault or disconnection in the grid.

Do all inverter error codes mean a serious problem?

The different inverter brands have an array of unique error codes. True, not all inverter error codes mean a serious problem. Some are simply notifications, and some are automatically rectified.

What are ABB inverter error codes?

ABB Inverters combine two systems when displaying errors. In addition to the operating status LED that flashes, they show an error code together with an error message. While the error message is in plain text, the error code is in alphanumeric characters. We've previously covered a few of the ABB Inverter error codes.

What does error code 3 mean on a zeversolar inverter?

**Error Code 3 (Relay-Check Fault):** Error Code 3 indicates a failed output relay in your Zerversolar inverter. Consider replacing the relay to resolve this issue.

**Error Code 34 (Vac Failure):** Error Code 34 signals grid voltage outside permitted range. Ensure your grid connections are intact and within specifications.

## Cosda photovoltaic inverter fault code f02

---



### Liste der Fehlercodes von DEYE 3 phasiger-Hybrid-Hochvolt

F01 DC Inversed Failure Überprüfen Sie die Polarität des PV-Eingangs. F02 DC\_Insulation Failure Prüfen Sie, ob die PV-Anlage geerdet ist, und prüfen Sie zweitens, ob die Impedanz ...

### Troubleshooting Xantrex Inverter Fault Codes: A

Fault Code Description; F01: Overheating: F02: Low Battery Voltage: F03: High Battery Voltage: F04: When dealing with Xantrex inverter fault codes, it's essential to understand the specific fault codes, follow the ...



### How to Reset Inverter Fault: Troubleshooting Tips for ...

Fault codes vary depending on the manufacturer and model of the inverter, so refer to the user manual or manufacturer's website for a list of possible fault codes and their meanings. Typically, the fault code will be a ...

### Hotpoint Dishwasher FDL Range Error Code F02

A possible cause which could lead to your

dishwasher not filling at all may be a faulty inlet valve (also known as a fill valve). If you suspect that your valve is no longer operating at its optimal ...



## Error and warnings for KSTAR inverters , SoftControl Wiki

F02. GFCI Sensor Fault (1) Cut off all the power, Restart the inverter and wait until it functions normally. PV ISO Under Fault (1) Check for good ground connection; (2) Check if the earth ...



## Fault Busters: A field technician's guide to troubleshooting solar

This troubleshooting how-to guide can help technicians of all experience levels get the electrons flowing again, ideally with a single truck roll. Whether the repair is needed at ...

 TAX FREE    

**ENERGY STORAGE SYSTEM**

**Product Model**  
HJ-ESS-215A(100KW/215KWh)  
HJ-ESS-115A(50KW 115KWh)

**Dimensions**  
1600\*1280\*2200mm  
1600\*1200\*2000mm

**Rated Battery Capacity**  
215KWH/115KWH

**Battery Cooling Method**  
Air Cooled/Liquid Cooled

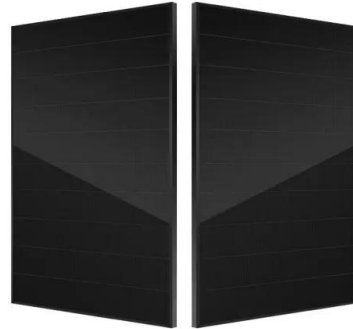


## ABB Aurora Power-One Inverter Fault & Error Codes

The ABB Aurora Power-One range of solar inverters include a variety of different sized solar inverters to suit nearly any on grid application and like every range of solar inverter they have a number of fault codes which can ...

## **Fault Diagnosis Method of Ningxia Photovoltaic Inverter Based ...**

Accurate fault diagnosis is the premise to ensure the safe and reliable operation of photovoltaic three-level inverter. A fault diagnosis method based on wavelet neural network ...



## **Contact Us**

---

For catalog requests, pricing, or partnerships, please visit:  
<https://www.ssab-proiect.eu>