

European Solar and Energy Storage Solutions

Can the wind turbine blades be transported by air



Overview

Radia's revolutionary aircraft, WindRunner, is designed to transport large turbine blades and other components directly to wind farm sites.

Radia's revolutionary aircraft, WindRunner, is designed to transport large turbine blades and other components directly to wind farm sites.

Instead, the wind turbine components, oversized equipment, must often be moved safely over considerable distances. For example, in the summer of 2016, LM Wind Power, a blade manufacturer in Denmark, arranged for an 88.4-meter blade (290 feet) to be transported 218 kilometers (135 miles) across Danish roads. It took nine months to plan the trip.

The Hybrid Airship is capable of serving as a blade carrier and handler. Attached to the airship's gondola, a two part system is self-propelled and designed to securely hold the blade during transport, facilitate the process of loading and unloading, and provide support to easily transport the blade once on land.

It results in tip heights exceeding 240 metres (787 feet). Together, the turbine and blades for one wind turbine can weigh more than 700 tonnes. The bigger the wind turbines, the more electricity they generate. Right now, wind turbines generate about 10 percent of electricity in the US and 6 percent in Canada.

"The Aircraft can address the transportation challenges of the increasing size of wind turbine systems," Pasternak said. This aircraft will be able to, vertically and internally in its cargo area, transport large-scale, 10MW-plus wind blades and other components to any destination in the world. How to transport a wind turbine blade?

It takes a lot of planning on the side of your logistics company to transport one big wind turbine blade. A wind turbine blade trailer may need the use of a multi-axle trailer to transport such long, hefty blades. This will be the wisest option since a commercial wind turbine can take up to seven rigs just to complete a delivery.

How do you transport a wind turbine?

You'll need to research for wind turbine transporters who have access to trucks with flatbed trailers that can handle the oversized equipment's size and weight. It takes a lot of planning on the side of your logistics company to transport one big wind turbine blade.

How are wind turbine blades delivered?

With wind turbines, it must be delivered to the wind farm site from the port of entry or the manufacturer. Some parts even need to be disassembled for shipping. However, the blades must be delivered in one piece. On average wind turbine blades' size are 116 feet in length. They are still manageable for truck transportation at this length.

What is a wind turbine blade transport trailer?

Many turbines are manufactured domestically and abroad; however, they are usually trucked to their final destination. When talking about a wind turbine blade transport trailer, the components consist of hauling a wind turbine, including wind turbine blades size, towers and more.

How long does it take to transport a wind turbine?

Retrieved from Shutterstock. It's not easy transporting wind turbines; relocating wind turbines can take close to a year of planning and up to ten loads. Many turbines are manufactured domestically and abroad; however, they are usually trucked to their final destination.

Where can I ship my wind turbines?

DSV has offices and representatives all over the world. With this global network and set-up, you have access to the know-how and vessels you need to move and ship your wind turbines wherever they need to be safely and efficiently - whether that's an individual wind turbine, a blade or a turnkey solution for on- or offshore wind farms.

Can the wind turbine blades be transported by air



Shipping wind turbines and blades - Global network, DSV

With this global network and set-up, you have access to the know-how and vessels you need to move and ship your wind turbines wherever they need to be safely and efficiently - whether ...

Transportation of Large Wind Components: A Permitting and ...

...

This report summarizes permitting and regulatory issues associated with transporting wind turbine blades, towers, and nacelles as well as large transformers. These "wind components" are ...



How to Transport Wind Turbine Blades , Freedom Heavy Haul

The Challenges to Transport Wind Turbine Blades: Transporting wind turbine blades is no easy feat. They must be carefully planned and executed to ensure their safe delivery. Challenges of ...



How to transport Wind Turbines: Detailed Guide

Cost of Transporting Wind Turbines. The cost of

transporting wind turbines varies significantly based on distance and logistical complexities: Short-Haul Shipments: Typically range from \$30,000 to \$40,000 per turbine. Long-Haul Shipments: ...

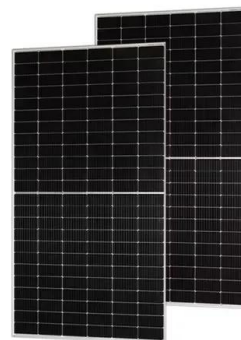


Blade Lifter: Wind blade transportation

The new transport system for wind turbine blades. Transport Onshore wind. Historically, transporting wind turbine blades has not been easy due to the increasing size and weight of the blades and the fact that wind farms are often ...

Can You Ship Wind Turbines by Train?

According to the EERE, most of the components of wind turbines installed in the U.S. are manufactured domestically, and there are more than 500 wind-related manufacturing facilities across the country. Even the largest wind turbine ...



Solving the Challenge of Transporting Wind Turbine Blades

The Hybrid Airship is capable of serving as a blade carrier and handler. Attached to the airship's gondola, a two part system is self-propelled and designed to securely hold the blade during ...

Transportation of wind turbines as cargo

It is important to remember the sensitivity of the cargo, and the great values involved. Just one blade may cost around USD 170,000. When in the planning stage before loading, it is of utmost importance to carefully go ...



Wind turbine transportation: Why route assessments ...

It results in tip heights exceeding 240 metres (787 feet). Together, the turbine and blades for one wind turbine can weigh more than 700 tonnes. The bigger the wind turbines, the more electricity they generate. Right ...

Transporting Wind Turbine Blades: How To Do It ...

Instead, the wind turbine components, oversized equipment, must often be moved safely over considerable distances. For example, in the summer of 2016, LM Wind Power, a blade manufacturer in Denmark, ...



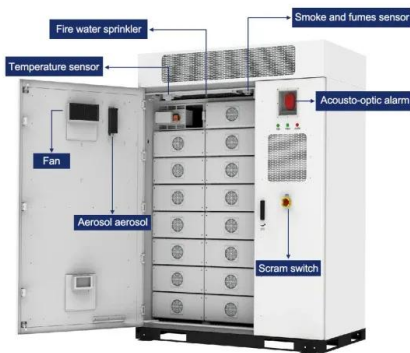
The concept of segmented wind turbine blades: a review

Wind turbine blades can also be transported by rail. While blade lengths are not limited to the 70 size of a single rail car, trains have to go slower when part of the blade is hanging over board



How Utility Helicopter Construction Is Advancing Green Energy

New roads leading to wind turbine sites are one of the largest costs for wind farm owners, and transporting tower sections and turbine blades can provide logistical challenges that prevent ...



Longest air cargo ever carried makes landing

A record-breaking journey has ended safely. The largest airplane in the world, a 175-ton Russian cargo carrier (the Antonov 225), transported two prototype wind turbine blades from China to Denmark. The 42-m GloBlades, headed for LM ...

Shipping wind turbines is not a breeze

The largest wind turbines can weigh up to 700,000 pounds fully assembled and typically require around 10 loads to transport, Lemke said. One turbine breaks down into three blades, each transported on two three-axle ...



Contact Us

For catalog requests, pricing, or partnerships, please visit:
<https://www.ssab-proiect.eu>