

European Solar and Energy Storage Solutions

Can the photovoltaic panel main line be connected How to connect it



Overview

There are two basic approaches to connecting a grid-tied solar panel system, as shown in the wiring diagrams below. The most common is a "LOAD SIDE" connection, made AFTER the main breaker. The alternative is a "LINE OR SUPPLY-SIDE" connection made BEFORE the main breaker.

There are two basic approaches to connecting a grid-tied solar panel system, as shown in the wiring diagrams below. The most common is a "LOAD SIDE" connection, made AFTER the main breaker. The alternative is a "LINE OR SUPPLY-SIDE" connection made BEFORE the main breaker.

Wiring solar panels together can be done with pre-installed wires at the modules, but extending the wiring to the inverter or service panel requires selecting the right wire. For rooftop PV installations, you can use the PV wire, known in Europe as TUV PV Wire or EN 50618 solar cable standard.

Main options for connecting photovoltaic system to an electrical installation: (1) to the main LV Switchboard; (2) to a secondary LV Switchboard; and (3) upstream from the main LV switchboard. 1. Recommended design: connect to the main LV switchboard.

Connecting PV modules in series and parallel are the two basic options, but you can also combine series and parallel wiring to create a hybrid solar panel array. Some solar panels have microinverters built-in, which impacts how you connect the modules together and to your balance of system.

The main panel is connected to the grid. If there are loads on the main panel, then some or all of that PV source current will flow to the loads. If there are no loads, the current will flow towards the loads on the grid. Can a photovoltaic system be connected to a building electrical installation?

Indeed, a photovoltaic system can be connected to the building electrical installation at different places: to the main low-voltage (LV) switchboard, to a secondary LV switchboard, or upstream from the main LV switchboard. These options, their advantages and drawbacks are discussed in this blog post. 1.

How do I connect a grid-tied solar panel system?

Always refer to the NEC code in effect or consult a licensed electrician for safety and accuracy. There are two basic approaches to connecting a grid-tied solar panel system, as shown in the wiring diagrams below. The most common is a "LOAD SIDE" connection, made AFTER the main breaker.

Do solar panels come with a solar connector?

Solar panels do not always come with the solar connector attached. Attaching a solar panel connector to a PV wire is a two-step process: (1) crimping and (2) tightening the connector, to do this you require a wire stripper, crimping tool, and a solar panel connector assembly tool.

Are solar panels connected to the grid?

Most solar panel installations throughout the U.S. are connected to the grid. With grid-tied systems, you can draw power from the power grid when your solar panel system isn't producing electricity.

Do solar panels need wiring?

Most modern photovoltaic systems for residential or portable use don't actually require much "wiring." At least not in the traditional sense of soldering circuits together. The majority of solar panels and balance of system components use standardized connectors and cables, such as the Universal Solar Connector.

Do utility companies let solar panels connect to the grid?

Utility companies won't just let any solar energy system connect to their grid; they need to ensure that your solar energy system meets necessary electrical safety standards. They'll also ensure that your solar panel system will meet their respective net metering guidelines.

Can the photovoltaic panel main line be connected How to connect



The Complete Guide for Solar Panel Connectors

To connect solar panels in parallel, you require an additional component known as an MC4 combiner (or MC4 multi-branch connector), this name differs for other types of solar panel connectors. The image above ...

Solar panel wiring basics: How to wire solar panels

Most modern solar panel installations use single-conductor Photovoltaic (PV) wire, between 10 and 12 gauge AWG. Wiring is required to connect the solar panels to the charge controller, inverter, and battery (in an off-grid system).



The Complete Guide to Solar Panel Wiring Diagrams

Connecting PV modules in series and parallel are the two basic options, but you can also combine series and parallel wiring to create a hybrid solar panel array. Some solar panels have microinverters built-in, which ...

PV Interconnection: Load-Side vs. Line-Side

The main panel is connected to the grid. If there

are loads on the main panel, then some or all of that PV source current will flow to the loads. If there are no loads, the current will flow towards the loads on the grid.



Connecting Photovoltaic Panels Methods and Best Practices

If you want to connect different photovoltaic panels in parallel, you must consider the complexity of this process. Although, in theory, each panel operates independently, differences in ...

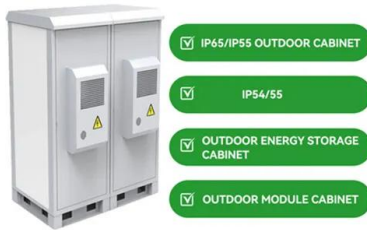
Solar Interconnection: What You Need to Know

There are several important steps along the path to installing solar: obtaining quotes, choosing your equipment, selecting an installer, and installing it. Arguably the most important step is connecting your solar energy ...



How to Connect Solar Panels

You can add more PV panels to your array and continue using the same inverter. If you wired the same array in series and exceed the voltage capacity of your inverter, it will either shut down or permanently damage the ...



Connecting a Solar Panel to Your House , How to Connect Solar Panels ...

Connecting a solar panel to your house is not always as easy as you may think. The following guide will show you how are solar panels connected to the house, and what should be ...

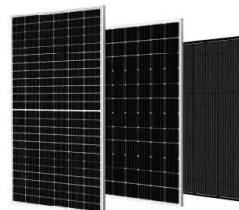


The Complete Guide for Solar Panel Connectors

Solar panel connections: How are solar panel connectors used? Learning how to use solar panel connectors is extremely important if you own a PV system. In this section, we teach you how to attach a solar ...

Solar Interconnection: How Solar Farms Connect to the ...

Utility interconnection is vital to completing a successful project. Therefore, successfully managing this critical step helps keep projects on schedule and budget. Unfortunately, interconnection issues can degrade ...





Solar Panel Wiring Diagram for All Setups [+ PDFs] - ...

How Does Solar Connect to the Main Panel? Solar panels connect to the main panel or breaker box through wire that first passes through the charge controller and the inverter. Once the inverter converts the current ...

Series, Parallel & Series-Parallel Connection of PV Panels

Step 1: Note the voltage requirement of the PV array. Since we have to connect N-number of modules in series we must know the required voltage from the PV array. PV array open-circuit ...



Contact Us

For catalog requests, pricing, or partnerships, please visit:
<https://www.ssab-proiect.eu>