

European Solar and Energy Storage Solutions

Can the locker be modified if it is too high



Overview

Based on the 2010 ADA Standards for Accessible Design the space must comply with the regulation in section 803 Dressing, fitting and Locker Rooms and section 811 storage. Lets.

803.1 General: Dressing, fitting, and locker rooms shall comply with 803.
803.1 General: Partitions and doors should be designed to ensure people using accessible dressing and fitting rooms privacy equivalent to that.

811.1 General: Storage shall comply with 811. 811.2 Clear Floor or Ground Space: A clear floor or ground space complying with 305 shall be provided.
305.3 Size: – REFERENCE ABOVE 811.3 Height: Storage elements shall.

In accordance with Section 225.2 of the 2010 ADA Standard, for locker rooms with 1 to 200 lockers, at least five percent but no fewer than one must be accessible, and in facilities with more than 201 lockers, ten lockers plus two percent of the total number of units over two hundred must be accessible.

In accordance with Section 225.2 of the 2010 ADA Standard, for locker rooms with 1 to 200 lockers, at least five percent but no fewer than one must be accessible, and in facilities with more than 201 lockers, ten lockers plus two percent of the total number of units over two hundred must be accessible.

Lockers can be customized to comply with the ADA and to fit the needs of your users. At least one locker, or five percent of all lockers in a setup, must meet ADA Locker Types and Their Requirements.

two things are happening when you do this. 1.) my lockers are disengaging because when my tires are spinning, they are spinning at over 18 mph and 2.) my RPM's are getting too high too fast with those 5.38 gears coupled with the Rubicons 4:1 gear reduction transfer case. I can solve problem 1 by running the bypass switch.

Where the occupancy classification of a building changes, the provisions of Sections 1002 through 1011 shall apply. This includes a change of occupancy classification and a change to another group within an occupancy classification.

Yes, restaurant lockers can be modified to suit specific needs and preferences.
2. Some common modifications include changing the size, adding shelves, custom locks, and aesthetic upgrades. Are your lockers ADA compliant?

Based on the 2010 ADA Standards for Accessible Design the space must comply with the regulation in section 803 Dressing, fitting and Locker Rooms and section 811 storage. Lets start with section 803 and we will review all sub sections to ensure our lockers are ADA compliant based on the following code sections below.

How many locker rooms are ADA compliant?

In accordance with Section 225.2 of the 2010 ADA Standard, for locker rooms with 1 to 200 lockers, at least five percent but no fewer than one must be accessible, and in facilities with more than 201 lockers, ten lockers plus two percent of the total number of units over two hundred must be accessible. So what does "accessible" mean?

.

How high should a locker be installed?

It is recommended that lockers are installed at least 24" away from walls and other obstacles to allow for a minimum floor clearance of 30" x 48" with a 10" minimum for door swing. In order for single-tier lockers to be considered ADA compliant, the topmost shelf must be installed at no higher or lower than 48" above the finished floor.

Does a double tier locker have ADA compliance?

For ADA compliance in double tier lockers, you will only need to add one extra shelf to the lower compartment to bring the locker bottom to 15" above the finished floor. Only the lower compartment of the locker will be utilized for ADA compliance, no changes need to be made to the top compartment.

How high should a second shelf be on a double tier locker?

Additionally, a second shelf will need to be installed at exactly 15" from the floor level. For ADA compliance in double tier lockers, you will only need to add one extra shelf to the lower compartment to bring the locker bottom to 15" above the finished floor.

What are ADA-approved locker locks & keys?

The most common ADA-approved handle is a recessed handle with a lock bar or single point, these are available for most single to triple tier lockers. There are a variety of ADA locker locks and keys available on the market that have been modified for easier operation.

Can the locker be modified if it is too high



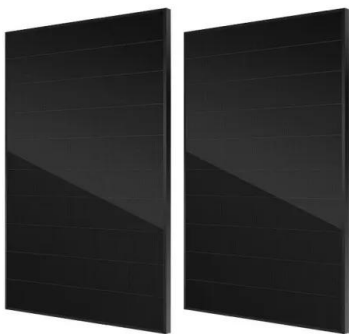
Modified Look-Locker inversion recovery (MOLLI) for high ...

(3), only four to five such single-point IR experiments can be performed within one breath-hold (ca. 20 s). To achieve accurate T 1 estimates from a three-parameter curve-fitting procedure, ...

Locker Comparisons - Understanding ...

Others can be do-it-yourself if you're mechanically able. If you're up to rebuilding engines, you can install a locker." --Chris Corbett, Randy's Ring & Pinion "Anything that requires disassembly of the unit to get at the spider gears

...



Top 10 Locker Hooking Tips

For quilting weight cotton (and these too can vary by vendor), I recommend 1/2?w for 5-Mesh, 3/ 4 - 1?w for 3.75 Mesh, and 1 - 1 1/2?w for 3-Mesh. textural, artsy design with altered loop length, but you still need to ...

Torq Masters R160 Locker

So ever since Torq Masters Industrie's released their locker for the Subaru R160 rear diff, many people have been asking me on my thoughts on

the locker so now that I have been using the locker for a few months, here are ...



8 most common threadlocker mistakes , Vehicle ...

Using too much threadlocker can cause excess to spill out and migrate to unwanted areas. The part may have to be disassembled in the future, either by you or another technician, and having a high strength bond in ...

Contact Us

For catalog requests, pricing, or partnerships, please visit:
<https://www.ssab-proiect.eu>