

## European Solar and Energy Storage Solutions

# Can photovoltaic panels be installed in buildings



## Overview

---

But solar technologies include much more than just rooftop panels, and building-integrated photovoltaics, also known as BIPV, takes the panel off the roof and, for example, puts it inside the roof .

But solar technologies include much more than just rooftop panels, and building-integrated photovoltaics, also known as BIPV, takes the panel off the roof and, for example, puts it inside the roof .

Building-integrated solar energy systems could provide electricity and/or heat to buildings and to their local environment (using photovoltaics, solar thermal or hybrids of the two).

These PV systems are installed on or near homes and buildings and at utility-scale power plants that have at least 1 megawatt of electric-generation capacity.

Building-integrated photovoltaic (BIPV) technology is one of the most promising solutions to harvest clean electricity on-site and support the zero carbon transition of cities.Can solar panels be installed on a commercial roof?

If you're considering installing a residential or commercial solar panel system, you might wonder if your roof type is appropriate for a solar installation. The good news is that solar panels can be installed on just about any roof type, but the installation process and mounting hardware might vary from material to material.

Can solar PV be used in New construction?

Integrating solar photovoltaics (PV) into new construction is becoming more and more popular in the United States. In California, rooftop solar PV became a requirement on newly built homes starting in 2020 and in some cities, this rule also applies to major renovations.

What is building-integrated photovoltaics?

Building-integrated photovoltaics is a set of emerging solar energy applications that replace conventional building materials with solar energy generating materials in the structure, like the roof, skylights, balustrades, awnings, facades, or windows.

Is a solar roof better than a conventional solar panel?

A solar roof has many potential advantages, but the technology is less mature than conventional solar panels. Mainly, the cells of solar roof products aren't as efficient as traditional monocrystalline or polycrystalline solar panels, and glaringly, the cost of a solar roof is typically much higher than a rooftop solar panel installation.

Do you need a permit to install solar panels?

Generally, local governments require a homeowner's solar installer/contractor to obtain a permit for rooftop panels before they can be installed. After the PV system is installed, a professional from the local government will inspect the new array to ensure all building, electrical, and safety codes have been followed.

Can you install solar panels on a flat roof?

Ballast systems are simply a weighted racking setup that holds solar panels in place. If you need to drill into your flat roof to install solar panels, don't worry – your solar installer will ensure that the holes they drill are as small as possible and sealed correctly to avoid roof damage or leaking. Can you install solar panels on wooden roofs?

## Can photovoltaic panels be installed in buildings

---



### Rules for Rooftop Solar

Installing Rooftop PV - Get a detailed overview of how homes are evaluated for solar, how a photovoltaic system works, and how it's installed. Reconsidering R-value Recommendations - Does the dropping cost of solar PV systems mean ...

### Solar Energy Guide for Homebuilders , Department of ...

...

Power produced by a solar power system is wired into the home's main electric panel. There are special requirements for labeling, sizing of the panel, and even the placement of breakers within the panel. Builders need an interconnection ...



### New planning rules to boost solar rollout and slash ...

The Government is clear that where possible already developed land should be used for solar panels, which is why the changes will make it easier for panels to be installed in canopies above car

### Installing Solar Panels on Different Roof Types

If you're considering installing a residential or commercial solar panel system, you might wonder if your roof type is appropriate for a solar installation. The good news is that solar panels can be installed on just about ...



## Photovoltaic Systems in Green Architecture: Powering Sustainable Buildings

Rooftop Installations: PV panels can be installed on rooftops, maximizing the use of available space and minimizing the visual impact of the system. 2. Building-Integrated ...

## Building-Integrated Photovoltaics in Existing ...

Among renewable energy generation technologies, photovoltaics has a pivotal role in reaching the EU's decarbonization goals. In particular, building-integrated photovoltaic (BIPV) systems are attracting ...



## Green roofs and facades with integrated photovoltaic system for ...

BIPV can be integrated into the building envelope (roof or façade), replacing traditional building envelope materials, and making a significant contribution to achieving net ...

## Expanding Solar Energy Opportunities: From Rooftops to Building

By generating clean energy onsite rather than sourcing electricity from the local electric grid, solar energy provides certainty on where your energy is coming from, can lower ...



## Building-integrated photovoltaics (BIPV): An overview

While traditional solar panels usually don't provide any actual structural function to the buildings they're installed on, BIPV does. At its core, BIPV is a category of dual-purpose solar products. Building-integrated ...

## Solar Energy Guide for Homebuilders , Department of Energy

Additionally, you can consider using building-integrated PV (BIPV) systems, in which solar panels also serve as functional components of a house, such as roofing, siding, skylights, awnings, or ...



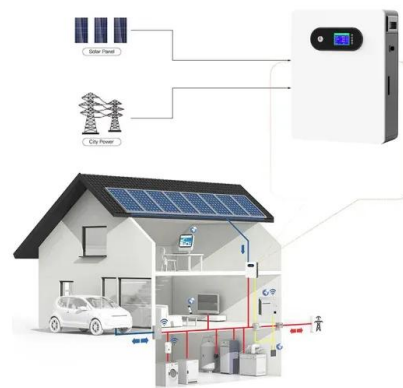
## Building-Integrated Photovoltaics in Existing Buildings: A Novel PV

Among renewable energy generation technologies, photovoltaics has a pivotal role in reaching the EU's decarbonization goals. In particular, building-integrated photovoltaic ...



## How close to the edge of your roof can your solar ...

But for solar panel mounting, equipment price is a good indicator of quality. Solar panels can still be installed in what they call the edge zone, provided the rails that panels are clamped to have around twice as many ...



## Contact Us

---

For catalog requests, pricing, or partnerships, please visit:  
<https://www.ssab-proiect.eu>