

## European Solar and Energy Storage Solutions

# Can photovoltaic panels be directly connected to lithium batteries



**636V-876V**  
**215KWH Distributed ESS Cabinet**

- Factory/farm/hotel/island etc solution
- Professional designing and analysis
- Lithium /GEL batteries optional
- Technical and installation support
- Intergrated 20/40ft container solution

## Overview

---

**Direct Connection Feasibility:** You can connect solar panels directly to batteries for immediate energy storage, but it requires careful planning to ensure safety and efficiency.

**Direct Connection Feasibility:** You can connect solar panels directly to batteries for immediate energy storage, but it requires careful planning to ensure safety and efficiency.

Don't connect a solar panel directly to a battery. Doing so can damage the battery. Instead, connect both battery and solar panel to a solar charge controller. It's recommended you fuse your system.

**Direct Connection Feasibility:** You can connect a solar panel directly to a battery, but it's essential to use a charge controller to prevent overcharging and protect the battery's lifespan.

Lithium batteries and solar panels are compatible because their high energy retention complements solar's intermittent energy generation, ensuring consistent power supply.

**Connection Basics:** Solar panels can be connected directly to batteries, but using a charge controller is highly recommended to prevent overcharging and protect battery life. Can a solar panel be connected to a lithium ion battery?

Lead-acid batteries are often used for cost-effective solutions, while lithium-ion batteries offer greater energy density and efficiency. Connecting solar panels directly to batteries can be done, but it requires careful consideration.

**Voltage Compatibility:** Ensure the voltage of the solar panel matches the battery's voltage.

Can a solar panel connect to a battery?

**Direct Connection Feasibility:** You can connect solar panels directly to batteries for immediate energy storage, but it requires careful planning to ensure safety and efficiency. **Importance of Voltage Compatibility:** Always

check that the voltage of your solar panel matches the battery's voltage to prevent damage and ensure optimal charging.

What is solar charging for lithium batteries?

Understanding solar charging for lithium batteries Solar charging involves converting sunlight into electricity to charge batteries. It utilizes photovoltaic cells, commonly known as solar panels, to capture sunlight and generate electrical current. Sustainability: Solar energy is renewable and abundant, making it environmentally friendly.

What type of battery do solar panels use?

The most common types of batteries used with solar panels are lead-acid and lithium-ion batteries. Each type has its own advantages, such as cost, lifespan, and efficiency, making it essential to choose one that fits your specific energy needs. How do I ensure voltage compatibility between my solar panel and battery?

.

How do I connect a solar panel to a battery?

The location should also provide easy access to the battery and charge controller. Use the Charge Controller: Install the charge controller between the solar panel and battery. Connect the solar panel's positive and negative leads to the corresponding terminals on the charge controller.

Can a solar panel overcharge a battery?

Overcharging can damage batteries, shorten their lifespan, and pose safety hazards. Voltage Compatibility: Ensure the voltage of the solar panel matches the battery's voltage. Mismatched voltages can lead to inefficient charging or battery damage. Potential for Damage: If the panel generates too much current, it might damage the battery.

## Can photovoltaic panels be directly connected to lithium batteries

---



### Can You Connect Solar Panels Directly to Battery?

Can you connect solar panels directly to a battery? What would happen if you do? A solar panel generates up to 20 volts, which is higher than the 12 volts required by a battery. If the solar ...

### Can You Hook a Solar Panel Directly to a Battery: Essential Steps ...

Yes, you can connect a solar panel directly to a battery. However, it's essential to use a charge controller to prevent overcharging, which can damage the battery. The charge ...



### PV Panel Battery , Photovoltaic Batteries for PV ...

If you consider the DCS 12V 100Ah Lithium battery it can be charged at up to 70A which is a 0.70C charge rate. This means you no longer need to consider DC-DC chargers as you can connect our batteries directly to high power charging ...

### Integration of a lithium-ion battery in a micro-photovoltaic system

In the present work, we have successfully integrated a commercial lithium-ion battery from an electric bicycle into a commercial micro-PV system, resulting in a 300 Wp/555 ...



## DC Microgrid based on Battery, Photovoltaic, and fuel Cells; ...

Lithium-ion battery Lithium-ion battery (LIB) is the most common type of batteries commercially used these days and that is due to its features such as high energy density, lack of memory ...

## Can I Hook A Solar Panel Directly To A Battery And Ensure Safe ...

4 ???· Wondering if you can connect a solar panel directly to a battery? This article provides essential insights into safely linking these components. Learn why using a charge controller is ...



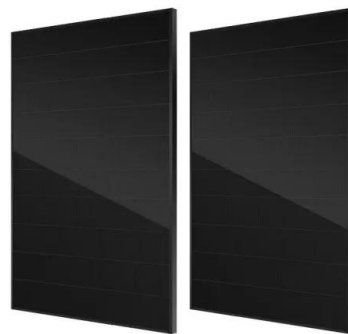
## Efficient Power Coupling in Directly Connected ...

The analysis of PV and battery I-Vs showed that at a constant 25 °C temperature directly connected PV-battery system can maintain a coupling factor above 90% in the wide range of irradiances and power output (0.02-1 ...



## Solar Integration: Solar Energy and Storage Basics

Solar power can be used to create new fuels that can be combusted (burned) or consumed to provide energy, effectively storing the solar energy in the chemical bonds. Among the possible fuels researchers are examining are hydrogen, ...



## Solar Charging Lithium Batteries: A Complete How-To ...

Understanding solar charging for lithium batteries. Solar charging involves converting sunlight into electricity to charge batteries. It utilizes photovoltaic cells, commonly known as solar panels, to capture sunlight and ...

## Can I Hook A Solar Panel Directly To A Battery And Ensure Safe ...

4 ???· Direct Connection. You can connect a solar panel directly to a battery, but this method has risks. When connecting directly, the voltage from the solar panel can exceed the battery's ...



## Lithium-Ion Solar Battery: Definition and How it Works

A lithium-ion solar battery (Li+), Li-ion battery, "rocking-chair battery" or "swing battery" is the most popular rechargeable battery type used today. The term "rocking-chair ...

## PWM solar charge controllers: A quick and ...

PWM (Pulse Width Modulation) solar charge controllers are electronic devices used in solar energy systems to protect the battery. These devices connect the solar panels to the battery to prevent it from overcharging ...



## Contact Us

For catalog requests, pricing, or partnerships, please visit:  
<https://www.ssab-proiect.eu>