

European Solar and Energy Storage Solutions

Can photovoltaic panels be arranged in a staggered manner



Overview

There are two ways of arranging solar modules in photovoltaic power stations, horizontal and vertical. Horizontal means that the long side of the solar module is parallel to the east-west direction, while vertical means that the short side is parallel to the east-west direction.

There are two ways of arranging solar modules in photovoltaic power stations, horizontal and vertical. Horizontal means that the long side of the solar module is parallel to the east-west direction, while vertical means that the short side is parallel to the east-west direction.

To increase the current N-number of PV modules are connected in parallel. Such a connection of modules in a series and parallel combination is known as “Solar Photovoltaic Array” or “PV Module Array”. A schematic of a solar PV module array connected in series-parallel configuration is shown in figure below.

According to experts, the placement and orientation of solar panels is just as important as which type of solar panel is used in a given situation. In order for solar panels to reach their peak generation capacity, a panel must face the correct direction and have the appropriate tilt according to their geographical location and meteorological data.

You can have vertical panels tilted at an angle, so the diffused light reflects off of clouds onto the solar panels. No matter what, you want to find the orientation that provides your house with the most energy.

Installing a photovoltaic (PV) array starts with selecting a suitable mounting structure, which will support the solar panels and place them at an optimal angle to receive sunlight. The choice of mounting structure depends on factors such as location, orientation, structural integrity, and aesthetics. What is a solar cell arrangement?

A solar cell arrangement is known as solar module or solar panel where solar panel arrangement is known as photovoltaic array. It is important to note that with the increase in series and parallel connection of modules the power of

the modules also gets added. Related Posts: [How to Wire Solar Panels in Series-Parallel Configuration?](#)

How to increase the current N-number of solar PV modules?

To increase the current N-number of PV modules are connected in parallel. Such a connection of modules in a series and parallel combination is known as “Solar Photovoltaic Array” or “PV Module Array”. A schematic of a solar PV module array connected in series-parallel configuration is shown in figure below. Solar Module Cell:.

Why does solar panel orientation and angle matter in a solar power system?

Prior to understanding why solar panel orientation and angle matter in a solar power system, we need to know how a solar panel collects energy from the sun. Solar panel cells only collect a specific wavelength during absorbing radiant energy from the sun.

Do solar panels need to be aligned?

As most solar PV panels are rectangular, panel orientations in terms of whether a panel is portrait or landscape are considered. Depending on the particular tracking system applied, solar PV installations may have alignment requirements given that adjacent panels may need to be installed in a row/column.

How to design a photovoltaic array?

Designing a photovoltaic array requires considerations such as location, solar irradiance, module efficiency, load demand, orientation, tilt angle, shading, and space constraints. It is crucial to optimize these factors for maximum energy production and cost-effectiveness. 2.

How to increase the power of a solar PV system?

Sometimes to increase the power of the solar PV system, instead of increasing the voltage by connecting modules in series the current is increased by connecting modules in parallel. The current in the parallel combination of the PV modules array is the sum of individual currents of the modules.

Can photovoltaic panels be arranged in a staggered manner



Solar Panel Orientation: Landscape vs Portrait , Fenice

...

In three, horizontal design is less resistant to the wind, however, in high areas a greater stability of landscape design could be achieved if you install it this way. Solar Panel Efficiency: The benefit of solar panels and ...

Solar Panel Orientation: Landscape vs Portrait , Fenice Energy

In three, horizontal design is less resistant to the wind, however, in high areas a greater stability of landscape design could be achieved if you install it this way. Solar Panel ...



Analysis of Different Solar Panel Arrangements using ...

shows the 3D arrangement of solar PV panels with solar tracking system. Fig.4 3D arrangement of solar PV panels with solar tracker C. Three layer solar PV panels with solar tracking system

...



Solar Panels Vertical Or Horizontal (Which Orientation Is Best!)

how vertical orientation can benefit your solar panels; your roof type for solar panel installation; what angle gets the most sunlight; There's no difference in the output solar ...



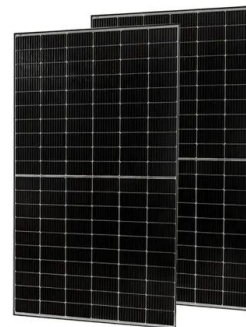
A Full Guide to Photovoltaic Array Design and ...

Installing a photovoltaic (PV) array starts with selecting a suitable mounting structure, which will support the solar panels and place them at an optimal angle to receive sunlight. The choice of mounting structure ...



Solar Photovoltaic System Design Basics

Solar Photovoltaic System Design Basics. Solar photovoltaic modules are where the electricity gets generated, but are only one of the many parts in a complete photovoltaic (PV) system. In order for the generated electricity to be useful in ...



The Ultimate Guide to Transformer for Solar Power Plant

Photovoltaic power generation is based on solar panels made up of an array of photovoltaic modules (cells) that contain the photovoltaic material. It is typically composed from silicon. The ...

(PDF) Spatial layout optimization for solar ...

In this 336 application, the highest coverage of 99.8% can be achieved for the no-alignment scenario (26 panels) and 337 vertical alignment scenario (27 panels) compared to that of 99.5% for the



A Complete Guide to Optimizing Solar Output with ...

When designing a solar panel layout, it is essential to avoid shading throughout the day, as it can significantly impact energy production. It's also critical to consider seasonal changes in the sun's position when spacing ...

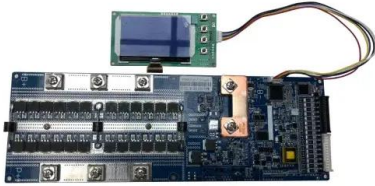
Solar Panel Wiring Basics: Complete Guide & Tips to Wire a PV ...

Centralized inverters with several MPPT trackers can optimize power output for solar panel strings featuring different specifications from one another, allowing you to wire a ...



in a staggered manner , English examples in context , Ludwig

High quality example sentences with "in a staggered manner" in context from reliable sources - Ludwig is the linguistic search engine that helps you to write better in English The word ...



How to Find the Best Orientation and Angle of Solar

...

Putting solar panels at the optimal angle and to the best orientation is essential to obtain the maximum energy in a solar power system. To maximize the energy conversion efficiency, use proper mount ...



Exploring the Shapes of Solar Panels

Solar panels have come a long way from their humble beginnings. From the ubiquity of rectangles to the audacity of innovative shapes, the world of solar energy embraces diversity in form. This journey into solar panel shapes ...

Solar Panel Series Vs Parallel: Wiring, Differences, And ...

To wire your solar panels in series, simply link the positive MC4 connector of the first solar panel to the negative MC4 connector of the next one, and continue this pattern for the remaining panels. Once you're finished, ...



Contact Us

For catalog requests, pricing, or partnerships, please visit:
<https://www.ssab-proiect.eu>