

European Solar and Energy Storage Solutions

Burundi elevation solar

Test certification
CE  FC 



Overview

The Mubuga Solar Power Station is a grid-connected 7.5 MW power plant in . The power station was constructed between January 2020 and October 2021, by Gigawatt Global Coöperatief, the Netherlands-based multinational (IPP), through its local subsidiary Gigawatt Global Burundi SA. The off-taker for this power station is Régie de production et distribution d'eau et d'électricité (), the Burundian electricity utility.

Where is a solar power station located in Burundi?

The power station is located in the settlement of Mubuga, in the Gitega Province of Burundi, approximately 15.2 kilometres (9 mi), northeast of the city of Gitega, the political capital of that country. This power station is the first grid-connected solar project developed by an IPP in Burundi.

What is the altitude range in Burundi?

In Burundi, altitude ranges from 775 metres to 2 670 metres. Uganda's altitude ranges from 620 meters to 5,110 meters above sea level. Burundi is endowed with outstanding topographical features which include the Mount Heha, forests, game parks, natural lakes, hot springs and rivers.

How many people were hired to operate Burundi's solar power station?

Another estimated 25-50 people were hired to operate the power station. In May 2023, Evariste Ndayishimiye, the president of Burundi toured the solar farm and personally gave his approval for the power station's capacity to be expanded to 15 megawatts.

Who toured Burundi's solar farm in May 2023?

In May 2023, Evariste Ndayishimiye, the president of Burundi toured the solar farm and personally gave his approval for the power station's capacity to be expanded to 15 megawatts. ^ a b c d e Jean Marie Takouleu (26 October 2021).

Burundi elevation solar



Burundi: elevation -- download elevation (topography) map

Digital elevation model extracted for a specific area. Geographically referenced regular raster at 30m resolution, elevation contours (topography) with given step and an elevation hillshade image. Data are 100% ready to go -- simply choose a format and get a set up project for your GIS in minutes.

Bujumbura December Weather, Average Temperature (Burundi)

December Weather in Bujumbura Burundi. Daily high temperatures are around 85°F, rarely falling below 80°F or exceeding 90°F. Solar elevation and azimuth over the course of December 2024. The black lines are lines of constant solar elevation (the angle of the sun above the horizon, in degrees). The background color fills indicate the



Burundi Solar Report ,, PVknowhow

Burundi's on-grid solar market is in its nascent stages, with around 9 MW of installed solar PV capacity as of 2023. The government is actively promoting solar energy through initiatives like the National Electrification Strategy, aiming to increase access to electricity, particularly in rural areas.

First solar field in Burundi lights up tens of thousands of homes

The pioneering 7.5MW solar PV plant has increased Burundi's generation capacity by over 10% and is the country's first substantial energy generation project to go online in over three decades, supplying clean power to tens of thousands of homes and businesses - just before the start of COP26.



Renewable Energy in Burundi: Challenges and Opportunities, ...

o Solar: Average daily solar insolation is 4-5 kWh/m²/day, indicating strong solar potential for Burundi ("Energy Profile Burundi" n.d.). There is a growing number of households, businesses, schools, and health clinics using distributed, off-grid solar. These systems can ...

Bubanza Summer Weather, Average Temperature (Burundi)

Summer Weather in Bubanza Burundi. Daily high temperatures are around 84°F, rarely falling below 79°F or exceeding 90°F. Solar elevation and azimuth in the the summer of 2024. The black lines are lines of constant solar elevation (the angle of ...



Bujumbura September Weather, Average Temperature (Burundi)

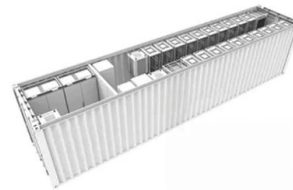
September Weather in Bujumbura Burundi. Daily



high temperatures are around 87°F, rarely falling below 83°F or exceeding 91°F. Solar elevation and azimuth over the course of September 2024. The black lines are lines of constant solar elevation (the angle of the sun above the horizon, in degrees). The background color fills indicate the

Burundi's solar capacity to double

Built through a multinational effort, the pioneering 7.5 MW solar PV plant near the village of Mubuga has been in operation since May 2021 and now provides over 10% of Burundi's electricity, supplying clean power to tens of thousands of homes and businesses.



Burundi Topography and Elevation Map

The western part of Burundi is a low-lying region that gradually slopes towards Lake Tanganyika. This area has an elevation of around 800 meters and is mostly covered by savannas and small patches of forest. Highest point. The highest point in Burundi is Mount Heha, which is located in the Bururi Province and has an elevation of 2,670 meters.

Mubuga Solar: A Blueprint for Independent Power Producer-Led ...

Located just 15 kilometers from Gitega -- Burundi's second-largest city and political capital -- this expansive facility features solar panels

spanning an area equivalent to six soccer fields .



Ngozi Summer Weather, Average Temperature (Burundi)

Summer Weather in Ngozi Burundi. Daily high temperatures are around 77°F, rarely falling below 71°F or exceeding 83°F. Solar elevation and azimuth in the the summer of 2024. The black lines are lines of constant solar elevation (the angle of the sun above the horizon, in degrees).

Bujumbura August Weather, Average Temperature (Burundi)

August Weather in Bujumbura Burundi. Daily high temperatures are around 86°F, rarely falling below 83°F or exceeding 90°F. Solar elevation and azimuth over the course of August 2024. The black lines are lines of constant solar elevation (the angle of the sun above the horizon, in degrees). The background color fills indicate the azimuth



Burundi's solar capacity to double

Built through a multinational effort, the



pioneering 7.5 MW solar PV plant near the village of Mubuga has been in operation since May 2021 and now provides over 10% of Burundi's electricity, supplying clean power to tens ...

Mubuga Solar Power Station

Summary Location Overview Financing Benefits Expansion See also External links

The Mubuga Solar Power Station is a grid-connected 7.5 MW solar power plant in Burundi. The power station was constructed between January 2020 and October 2021, by Gigawatt Global Coöperatief, the Netherlands-based multinational independent power producer (IPP), through its local subsidiary Gigawatt Global Burundi SA. The off-taker for this power station is Régie de production et distribution d'eau et d'électricité (REGIDESO), the Burundian electricity parastatal utility ...



Burundi's national grid adds 7.5MW solar power.

With a capacity of 7.5 MWp, the Mubuga solar power plant provides up to 10% of Burundi's electricity, according to Gigawatt Global. The Dutch IPP also estimates that the plant is capable of supplying 87,600 Burundians. It also represents the largest international private investment in Burundi's electricity sector in nearly 30 years.

Renewable Energy in Burundi:

Challenges and Opportunities,

...

o Solar: Average daily solar insolation is 4-5 kWh/m²/day, indicating strong solar potential for Burundi ("Energy Profile Burundi" n.d.). There is a growing number of households, businesses, ...



Mubuga Solar Power Station

The Mubuga Solar Power Station is a grid-connected 7.5 MW solar power plant in Burundi. The power station was constructed between January 2020 and October 2021, by Gigawatt Global Coöperatief, the Netherlands-based multinational independent power producer (IPP), through its local subsidiary Gigawatt Global Burundi SA.

Renewable Energy in Burundi: Challenges and Opportunities,

...

("Burundi Energy Profile" 2021). Solar made up 5% of all installed capacity in 2020, generating a total of 8 GWh of electricity for the year, which accounted for 2% of annual electricity generation in Burundi. Bioenergy is used for home cooking and heating. Firewood is the main source of this energy, as well as



Understanding the Elevation Angle in Solar Energy

Harnessing solar energy effectively is critical in our pursuit of sustainable and renewable energy solutions. One essential factor in optimizing solar power systems is the elevation angle. This article



delves into the importance of the elevation angle in solar energy, its fundamental principles, the factors affecting it, and its various applications.

Burundi topographic map, elevation, terrain

Average elevation: 1,474 m o Burundi o The average elevation of the central plateau is 1,707 m (5,600 ft), with lower elevations at the borders. The highest peak, Mount Heha at 2,685 m (8,810 ft), lies to the southeast of the largest city and economic capital, Bujumbura. The source of the Nile River is in Bururi province, and is linked from Lake Victoria to its headwaters via the



Contact Us

For catalog requests, pricing, or partnerships, please visit:
<https://www.ssab-proiect.eu>