

European Solar and Energy Storage Solutions

504 Photovoltaic Panel Weight



Overview

Standard residential solar panels typically weigh between 33 to 50 pounds each.

Standard residential solar panels typically weigh between 33 to 50 pounds each.

The size and weight of solar panels vary depending on the make and model, with most residential panels measuring about 5.5 feet by 3 feet and weighing between 40 and 50 pounds. The total system size is also influenced by the output and efficiency of the panels—a system using 50-pound 450-watt panels might actually be more compact than one .

Solar panel weight varies by manufacturer, but standard 60 cell solar panels weigh about 40 pounds. Commercial solar panels weigh around 50 pounds. Frames and mounting equipment for both.

Most solar panels are a little over 5 feet by 3 feet and weigh 40-45 pounds, but size varies by manufacturer. In this guide, we'll unpack solar panel size in greater detail, helping you determine how large of a system your property can accommodate before you purchase your panels.

Standard residential solar panels contain 60 solar cells (or 120 half-cut solar cells) and typically generate anywhere from 350W to 500W of electricity. The size of these panels can range from 1.6m tall x 1.0m wide, to 1.7m tall x 1.0m wide. How big are solar panels?

Residential solar panels consist of around 60 solar cells and are roughly 5.5 feet long and 3 feet wide. Solar panels usually weigh about 40 to 50 pounds. Commercial solar panels are generally larger than residential solar panels at 6.5 feet by 3 feet.

How much do solar panels weigh on a roof?

It is also important to consider the weight of installing solar panels on your rooftop. On average, mounting equipment and solar panels weigh two to four

pounds per square foot. “In terms of weight, it has little impact on your roof, as it’s built to support much heavier infrastructure.

Are 96 cell solar panels a good choice?

For even larger-scale commercial installations, solar panels with 96 cells are the way to go. The 96 cell solar panel is characterized by an 8 feet by 12 feet grid configuration, covers an area of 17.5 square feet and weighs approximately 70 pounds.

Why do solar panels have different dimensions & weights?

Solar panel brands often exhibit slight variations in dimensions and weights due to differences in manufacturing materials and construction.

504 Photovoltaic Panel Weight



Solar Panel Size & Weight: The Ultimate Guide 2024

Several factors impact the weight of solar panels such as their size, material composition, and design. Standard residential solar panels typically weigh between 33 to 50 pounds each. However, note that the weight can ...

How Much Do Solar Panels Weigh? 1.30 - 2,608.7 lbs ...

We have sampled 6 different solar panels with wattages ranging from 100W to 400W, and total weights ranging from 11.5 lbs to 51.8 lbs, to figure out what is a typical solar panel weight per square foot.



Solar Panels Size & Weight (Including Commercial ...

As with the size, the weight of a solar panel can vary by manufacturer. Typically, 60-cell residential solar panels weigh around 40 pounds a piece. The larger 72-cell panels used for commercial solar installations can ...

Solar Panel Weight Guide: Everything You Should Know

The most lightweight type of solar panel is called

a thin-film solar panel, but it is also the least efficient type. Most roofs should be able to handle the weight of all solar panel types. Solar ...



Structural Requirements for Solar Panels -- Exactus ...

ASCE 7 Guidelines. The American Society of Civil Engineers (ASCE) provides guidelines for the structural design of solar panel installations through their publication, ASCE 7 1. These guidelines cover the essential ...



Solar Panel Size & Weight Guide [+ Charts] - Solartap

Since the average residential solar panel weighs about 45 pounds and occupies about 18 square feet, the following calculations can be used to determine the approximate size and weight of a 10 kW solar system: Size: ...



Solar Panel Size and Weight: What You Need to Know

Understanding solar panel size and weight is key to making a smart investment in solar energy. The more informed you are, the easier it will be to plan your system efficiently. Carefully considering how many panels fit and ...



How much do solar panels weigh?

The average weight for a residential solar panel is around 40 pounds. They are approximately 5.4 feet long and 3.25 feet wide, which works out to about 2.3 pounds of weight per square foot. Each module typically contains 60 solar cells.

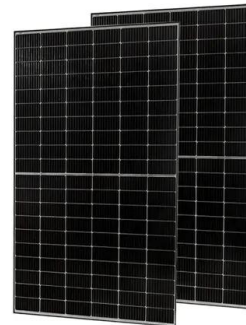


How big are solar panels? Solar panel size and weight

Solar panels generate clean energy and significant savings, but they aren't a one-size-fits-all solution. The size and weight of solar panels vary depending on the make and model, with most residential panels measuring ...

Solar Panel Size & Weight: A Comprehensive Guide

In this article we are going to lay down the foundation and give you all the factors that dictate solar panel size & weight. Additionally, we have created tables which give you examples of solar ...



GUIDELINES FOR PLAN CHECK AND PERMIT REQUIREMENTS ...

Where the solar panel/collector surface inhibits superimposed concentrated loads, the weight of the collector may replace up to half of the code required live loads. 7. Since maintenance of ...



Detailed analysis of solar panel weight and calculation ...

For large-scale photovoltaic power station, it is important to consider the solar panel weights and other factors to ensure the safe operation of the power plant.. 1. Factors that affect the solar panel weight (1) Solar panel ...

HEAT DISSIPATION

Cold aisle containment, making optimal refrigeration effect:



How big are solar panels? Solar panel size and weight

The size and weight of solar panels vary depending on the make and model, with most residential panels measuring about 5.5 feet by 3 feet and weighing between 40 and 50 pounds. The total system size is also influenced ...

Solar Panel Sizes, Dimensions & Weight , Solar Choice

Standard residential solar panels contain 60 solar cells (or 120 half-cut solar cells) and typically generate anywhere from 350W to 500W of electricity. The size of these panels can range from 1.6m tall x 1.0m wide, to ...



Contact Us

For catalog requests, pricing, or partnerships, please visit:
<https://www.ssab-proiect.eu>