

European Solar and Energy Storage Solutions

100w photovoltaic panel maximum current



Overview

The article discusses various specifications of 100-watt solar panels sold through Shop Solar Kits. It highlights differences in weight, dimensions, cell type, maximum power, voltage, current, system voltage, and warranty among different models. These specifications are crucial in determining the suitability of a solar panel.

The main specifications that you want to look out for when purchasing a 100-watt solar panel would be the weight, the dimensions, cell type maximum power, maximum power voltage, maximum power current, maximum system.

Now that we have discussed the more technical and manufacture-related specifications, you can see how different 100-watt solar panels can be, and why it is important to assess the specs. We will now be moving on to more.

Struggling to understand how solar + storage systems actually work?

Looking to build or buy your own solar power system one day but not sure what.

A 100 watt solar panel can generate a maximum of 8.3 amps of current assuming 100% efficiency.

A 100 watt solar panel can generate a maximum of 8.3 amps of current assuming 100% efficiency.

A 100-watt solar panel system requires between 8 and 12 amps of current and between 36 and 48 volts of voltage to operate.

When all is said and done, your 100W panel should provide about 5.5 amps of current in full sunlight.

On a sunny day, the board can produce up to 100 watts of power and has a maximum voltage of 21.2V. The panel's open circuit voltage (Voc) is 22.5V, and its short circuit current (Isc) is 6.10A. How much power does a 100 watt solar panel produce?

This means that, under ideal conditions, the 100W solar panel could generate

between 97 and 103 Watts of power. However, since the power output is directly linked to Solar Irradiance (W/m^2), which changes with the time of day, weather, and location, the actual power output of a 100-watt solar panel can fluctuate from 0 to 100 watts.

What type of battery should a 100 watt solar panel use?

A 100-watt solar panel is typically paired with a 12V battery for energy storage. A 10A solar charge controller is recommended to regulate the current flowing from the solar panel into the battery, preventing overcharging.

How much does a 100 watt solar panel cost?

Usually only costing a couple hundred dollars per panel, 100-watt solar panels are an affordable and versatile panel. They're a little too small to be effective for residential projects. However, 100-watt solar panels can be used for virtually any off-grid project.

How much sunlight does a 100W solar panel need?

In most cases, a 100W solar panel is used with 12-volt batteries. To fully charge the battery, at least eight hours of direct sunlight in optimal conditions are required.

Which inverter is best for a 100 watt solar panel?

To figure out which inverter to get for a 100-watt solar panel, doubling the wattage is a safe bet, so a 200-watt inverter would work perfectly. Power Inverter: The power inverter makes the power you generate compatible with the grid. Wiring: Correctly sized wires are very important to the performance and safety of your solar panel system.

How many amps does a 100W solar panel provide?

When all is said and done, your 100W panel should provide about 5.5 amps of current in full sunlight. Now that we know how many amps are being produced by our panel, we need to determine the number of 'amp hours' (Ah) that are in our battery or device. For instance, let's say we're charging a 20Ah lithium battery.

100w photovoltaic panel maximum current



Solar Panel Maximum Voltage Calculator

Multiply the solar panel open circuit voltage by the maximum voltage increase percentage. Max voltage increase = $20.2V \times 12\% = 2.424V$. 4. Add the maximum voltage increase to the solar panel open circuit voltage. ...

Renogy 100W 12V Monocrystalline Solar Panel , Renogy Solar

100 Watt 12 Volt Monocrystalline Solar Panel ; Max Power at STC: 100W: Open Circuit Voltage: 24.3 V: Short Circuit Current: 5.21 A: Optimum Operating Voltage: 20.4 V: Optimum Operating ...



Rich Solar 100W ONYX Monocrystalline Solar Panel

Seize command of your energy with the RICH SOLAR 100 Watt Monocrystalline Solar Panel in Black. Discover the advantages of producing clean and sustainable power, coupled with the convenience of effortless installation and the ...



Amps Produced by a 100-Watt Solar Panel: Explained ...

A 100 watt solar panel can generate a maximum

of 8.3 amps of current assuming 100% efficiency. However, the actual amp hours obtained from a 100 watt solar panel can vary based on sunlight exposure, solar cell count, ...

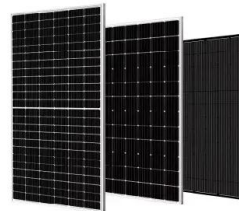


A 100 Watt Solar Panel: What it Can Run and How ...

What Will A 100 Watt Solar Panel Run? Now that we know how much electric current we can expect from a 100 watt panel, let's take a look at some of the uses for this panel: Off-grid charging of solar batteries; Pairing with a 'solar ...

100W Monocrystalline 12V Solar Panel

The void space reduction between the 9BB solar cells is designed to enhance the overall efficiency of the PV module by lowering current lengths and mitigating against loss of output. Key Features. 100W/12V monocrystalline high ...



How Many Amps Does a 100 Watt Solar Panel ...

Current Output of 100-Watt Solar Panel. The maximum current output of a 12 volt 100 watt solar panel is 8.3 amps. A 24 volt one can generate up to 4.2 amps. Here is a table that estimates the current output of these ...

Best High-Quality 100 Watt Solar Panels Compared 2024

The Renogy 100W and Renogy 100 have the highest operating current, but not by much. The Newpowa 100W is the most compact out of the four rigid panels. Both flexible panels are much lighter than each rigid panel and ...



Parallel Connected Solar Panels For Increased Current

The DC current output of a solar panel, (or cell) depends greatly on its surface area, efficiency, and the amount of irradiance (sunlight) falling onto its surface. Note that while manufacture's will state a maximum or peak wattage (40W, ...

OPES Solutions , Omnia Series Mono 100 Watt , Solar Panel ...

Open Circuit Voltage (Voc) 19.88 V. Short Circuit Current (Isc) 5.18 A. Temperature. 45 ± 2 °C. Nominal Operating Cell Temperature (NOCT): 800W/m², AM 1.5, windspeed 1m/s, ambient ...



Solar Panel Ratings Explained - Wattage, Current, Voltage, and

A 100-watt solar panel typically produces between 300 and 600 watt-hours (Wh) of solar energy per day. A 100 W panel provides enough power to run or charge a few small electronic ...



Contact Us

For catalog requests, pricing, or partnerships, please visit:
<https://www.ssab-proiect.eu>