

European Solar and Energy Storage Solutions

1 square meter solar panel Montserrat



Overview

What is solar panel watts per square meter (W/M)?

Solar panel watts per square meter (W/m) measures the power output of a solar panel based on its size. Compare solar panels to see which generates most electricity per square meter. A higher W/m value means a solar panel produces more power from a given area. This can help you determine how many solar panels you need for your energy needs.

How much does a solar panel cost per square meter?

These incentives effectively lower the price per square meter of a solar panel system, making it more affordable for individuals and businesses. The price per square meter of a solar panel can vary depending on several factors. Generally, residential solar panel systems cost around \$1,500 to \$3,000 per square meter.

How many solar panels are needed for 1000 kWh?

Solar panels with a power rating of 400 watts are used in the majority of household solar installations. This is due to the fact that you get more power output per square foot. To continue our example of calculating the number of solar panels required for 1000 kWh, divide 6203 by the solar panel power output (400W in this case).

How do you calculate wattage of a solar panel?

Wattage is the output of solar panels that is calculated by multiplying the volts by amps. Here, the amount of the force of the electricity is represented by volts. The aggregate amount of energy used is expressed in amps (amperes). Output ratings on most solar panels range between 250 watts to 400 watts. 1. Number of Solar Cells.

Which solar panel has the highest efficiency?

A solar panel with high efficiency produces more output. The conversion rate

of silicon-based solar panels is between 18% and 22% of the total sunlight received by them. It led them to exceed 400 watts of power. The solar panels with the highest efficiency up till now were developed by the National Renewable Energy Laboratory (NREL).

How many kWh does a solar panel produce?

Depending on the geography and weather circumstances, the average solar panel produces between 170 and 350 watts per hour. This equates to approximately 0.17 to 0.35 kWh per solar panel. A solar panel generates how much kWh?

1 square meter solar panel Montserrat

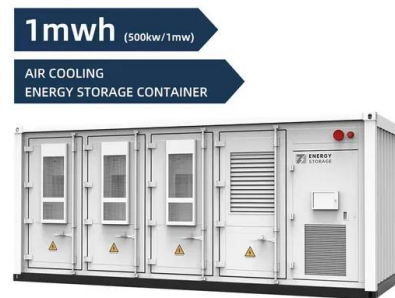


What is a reasonable cost for a 1 square meter PV panel?

What is a decent price to estimate the cost of a solar panel (one square meter), assuming it is capable of achieving something on the order of 15% cell efficiency (for direct overhead source). \$100/m²? \$200/m²? Ignore the "location" where it will be used. I'm thinking more like the purchasing agent who doesn't know or care where it is going.

How Much Power Do Solar Panels Produce Per Square Meter?

The average solar panel has an input rate of roughly 1000 Watts per square meter, while the majority of solar panels on the market have an input rate of around 15-20 percent. As a result, if your solar panel is 1 square meter in size, it will likely only produce 150-200W in bright sunlight.

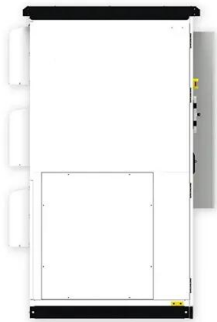


Solar Panels Watts per Square Meter

As these technologies develop, we can expect to see even higher watts per square meter ratings for solar panels, making them even more attractive for sustainable energy solutions. Conclusion. Solar panels have become a symbol of clean, renewable energy. Understanding the concept of "watts per square meter" is crucial for assessing their

How much is a solar panel? One square meter?

In fact, solar panels generally calculate unit prices based on power (watts) rather than square meters. If one square meter of polysilicon modules is around 150W and the market price is 4 yuan / watt, the price of one square meter is about 600 yuan.



Calc Power Output of 1 Square Meter Solar Panel on Earth

The average power output of a 1 square meter solar panel on Earth is around 150-200 watts per hour, depending on various factors such as location, weather conditions, and panel efficiency. How is the power output of a solar panel calculated?

How much electricity can one square meter of solar panels ...

The method for calculating the power of a solar panel is as follows: length * width * solar cell conversion efficiency * 0.1=power (in centimeters). So, how much electricity can a one-square-meter solar panel generate? Taking monocrystalline silicon as an example: 100 * 100 * 19.5% * 0.1 (calculated based on monocrystalline silicon)=195W.



How much is a solar panel? One square meter?

In fact, solar panels generally calculate unit prices based on power (watts) rather than square meters. If one square meter of polysilicon modules is around 150W and the market price is 4 yuan / watt, the price of one square meter is

about 600 yuan. The specific price and efficiency must be determined according to the manufacturer.



How much electricity can one square meter of solar ...

The method for calculating the power of a solar panel is as follows: length * width * solar cell conversion efficiency * 0.1=power (in centimeters). So, how much electricity can a one-square-meter solar panel ...



2MW / 5MWh
Customizable



How Many Solar Panels Needed For 1 MW POWER (Updated)

The lower the solar irradiation, the more panels will be required to achieve 1 MW. Panel Wattage. Solar panels come in various wattages, ranging from around 200W to 400W or more. The wattage of a panel determines its power output. Higher-wattage panels produce more electricity, requiring fewer panels to reach 1 MW. Calculating Solar Panels for 1 MW

How Many Solar Panels Can Fit on One Acre of Land?

One square meter of solar panels, in full sun, can make roughly 1 kilowatt-hour each hour for 6 hours. An acre has about 4,050 square meters. So, it fits around 4,050 solar panels. A 1-acre

solar farm with 4,050 panels, each 250 watts, might produce 90,000-110,000 kilowatt-hours of power yearly. This shows how much electricity a well-placed



Use these facts in the following exercises: Solar

Find step-by-step Business maths solutions and the answer to the textbook question Use these facts in the following exercises: Solar (photovoltaic) cells convert sunlight directly into electricity. If solar cells were \$100 %\$ efficient, they would generate about \$1000\$ watts of power per square meter of surface area when exposed to direct sunlight.

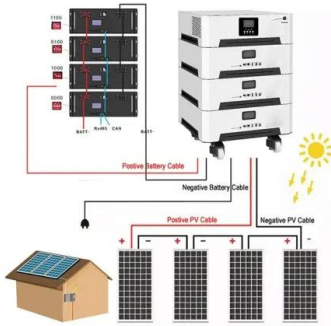
Solar Panel Price Per Square Meter: Understanding Costs

When considering the price per square meter of a solar panel, several factors come into play. These factors can vary widely, and it is vital to understand how they can affect the overall cost of installing solar panels. 1. Manufacturing Costs



Types of Electric Meters for Solar

Solar Panels Network USA recently assisted Mr. and Mrs. Stuart, homeowners in California, in selecting the appropriate electric meter for their new solar panel installation. The Stuarts aimed to optimize their energy consumption, reduce ...



Solar Panel Watts Per Square Meter Explained

Solar panel watts per square meter (W/m) measures the power output of a solar panel based on its size. Compare solar panels to see which generates most electricity per square meter. A higher W/m value means a solar panel ...



Calc Power Output of 1 Square Meter Solar Panel on Earth

It is unlikely that a single 1 square meter solar panel can power an entire household, as the average household consumes around 30 kilowatt-hours (kWh) per day. However, multiple panels can be connected in a solar array to generate enough power to meet a household's energy needs.

Solar Panel Watts Per Square Meter Explained

Solar panel watts per square meter (W/m) measures the power output of a solar panel based on its size. Compare solar panels to see which generates most electricity per square meter. A higher W/m value means a solar panel produces more power from a given area.



Solar Panel Price Per Square Meter: Understanding Costs

1. How is the price of solar panels determined per square meter, and what factors contribute to the variation in costs that SolarClue® can help users understand in 2024? SolarClue® helps users understand the factors contributing to the variation in costs and how the price of solar panels is determined per square meter in 2024.

How to install solar panels in Portugal

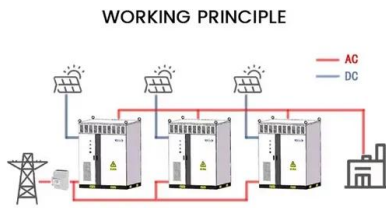
Thin Film. This type of panel is made up of very thin structures that can be set up on roof tiles, glass, and masonry. Their thinness makes them light and the fact that they are made of amorphous silicon, cadmium telluride, and/or gallium gives them flexibility, also. This option is, most of the time, chosen for aesthetic purposes and large-scale projects, due to its ...



By using this fact in the following exercise: Solar

Find step-by-step Business math solutions and your answer to the following textbook question: By using this fact in the following exercise: Solar (photovoltaic) cells convert sunlight directly into

electricity. If solar cells were 100% efficient, they would generate about 1000 watts of power per square meter of surface area when exposed to direct sunlight.



How Much Area for 1kW Solar Panel: A Comprehensive Guide

On average, solar panels are about 1.6 square meters in size for a 300-watt panel. Thus, to install a 1kW system, you would need around 5-6 square meters of space. Panel Efficiency and Space. The efficiency of solar panels plays a crucial role in determining the space needed. High-efficiency panels can produce more power per square meter



High-Efficiency cost of 1 square meter solar panel

Cost Of 1 Square Meter Full Black Solar Panel Off Grid System 450W Energy Residential House For Commercial. \$56.44-\$59.10. Min. Order: 36 pieces. Previous slide Next slide. Cheap Cost Of One 1 Square Meter Solar Panel Installation For Home. \$0.17-\$0.19. Min. Order: 2 pieces. Previous slide Next slide.

12 Days of Christmas GMAT Competition

2 ???· A solar energy project involves installing solar panels over a total area of 240 square meters and has two design strategies to choose from. Strategy 1 uses the entire 240 square

meters for a single high-efficiency solar panel setup, which provides an electrical output equal to 0.5kWH per square meter.



Contact Us

For catalog requests, pricing, or partnerships, please visit:
<https://www.ssab-proiect.eu>